


WAAS CH <b>86902</b> W24A	APP CRS <b>241°</b>	Rwy Idg TDZE <b>16</b> Apt Elev <b>18</b>	<b>5000</b>
---------------------------------	------------------------	---	-------------

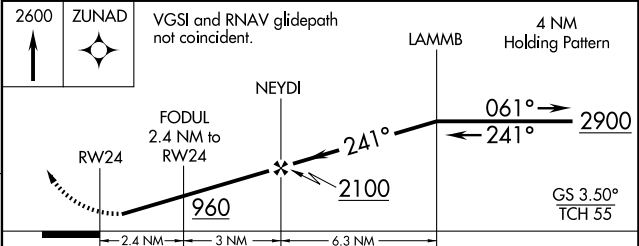
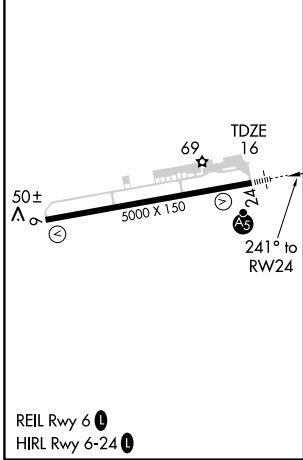
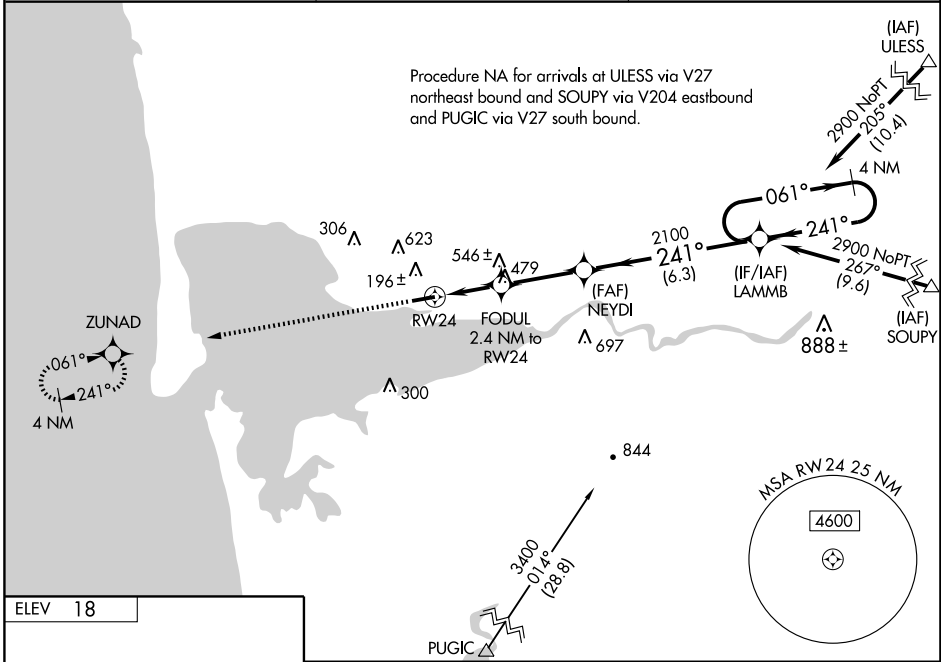
# RNAV (GPS) RWY 24

HOQUIAM/BOWERMAN (HQM)

**⚠** For uncompensated Baro-VNAV systems, LNAV/VNAV NA below -15°C (5°F) or above 47°C (116°F). Inoperative table does not apply to LPV. DME/DME RNP-0.3 NA. Visibility reduction by helicopters NA. For inoperative MALS, increase LNAV Cat A visibility to 1 mile. Circling NA northwest of Rwy 6-24. When local altimeter setting not received, procedure NA.

**MALS**  
  
**MISSED APPROACH:** Climb to 2600 direct ZUNAD and hold.

ASOS <b>135.775</b>	SEATTLE CENTER <b>128.3 269.0</b>	UNICOM <b>122.7 (CTAF)</b>
------------------------	--------------------------------------	-------------------------------



CATEGORY	A	B	C	D
LPV DA	216- <sup>3</sup> / <sub>4</sub>	200 (200- <sup>3</sup> / <sub>4</sub> )	286-1 270 (300-1)	NA
LNAV/VNAV DA	1029-2 <sup>1</sup> / <sub>2</sub> 1013 (1100-2 <sup>1</sup> / <sub>2</sub> )			NA
LNAV MDA	800- <sup>3</sup> / <sub>4</sub>	784 (800- <sup>3</sup> / <sub>4</sub> )	800-1 <sup>3</sup> / <sub>4</sub> 784 (800-1 <sup>3</sup> / <sub>4</sub> )	NA
CIRCLING	800-1 782 (800-1)	800-1 <sup>1</sup> / <sub>4</sub> 782 (800-1 <sup>1</sup> / <sub>4</sub> )	800-2 <sup>1</sup> / <sub>4</sub> 782 (800-2 <sup>1</sup> / <sub>4</sub> )	NA

NW-1, 22 OCT 2009 to 19 NOV 2009

NW-1, 22 OCT 2009 to 19 NOV 2009