

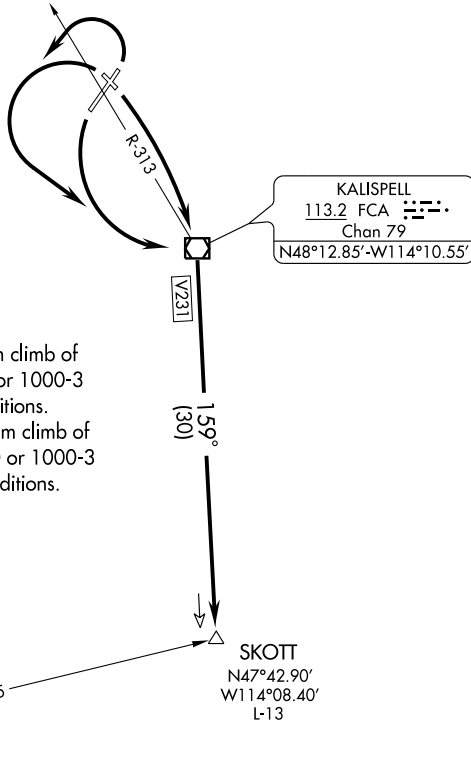
(SKOTT1.SKOTT) 09183

SL-887 (FAA)

KALISPELL/GLACIER PARK INTL (GPI)
KALISPELL, MONTANA

SKOTT ONE DEPARTURE (OBSTACLE)

SALT LAKE CENTER
133.4 285.4
GREAT FALLS RADIO
122.6
GLACIER TOWER★
124.55



TAKE-OFF MINIMUMS

Rwys 12, 20: Standard.

Rwy 2: Standard with minimum climb of 444' per NM to 7500 or 1000-3 for climb in visual conditions.

Rwy 30: Standard with minimum climb of 249' per NM to 5900 or 1000-3 for climb in visual conditions.

MULLAN PASS
117.8 MLP
Chan 125

SKOTT
N47°42.90'
W114°08.40'
L-13

TAKE-OFF OBSTACLE NOTES

- Rwy 2: Multiple trees beginning 1468' from DER, 674' right of centerline, up to 91' AGL/3061' MSL.
- Rwy 12: Multiple trees beginning 1426' from DER, 543' left of centerline, up to 129' AGL/3082' MSL. Railroad 702' from DER, 317' left of centerline, 31' AGL/2997' MSL. Road 544' from DER, 299' left of centerline, 22' AGL/2988' MSL.
- Rwy 20: Multiple trees beginning 2742' from DER, 1140' left of centerline, up to 107' AGL/3169' MSL.
- Rwy 30: Multiple trees beginning 1848' from DER, 722' left of centerline, up to 104' AGL/3067' MSL.

NOTE: Chart not to scale.



DEPARTURE ROUTE DESCRIPTION

TAKE-OFF RUNWAY 2: Climbing left turn direct FCA VOR/DME, thence.... or, climb in visual conditions to cross Glacier Park Intl Airport southeast bound at or above 3800, then via FCA R-313 to FCA VOR/DME, thence....

TAKE-OFF RUNWAY 30: Climbing left turn direct FCA VOR/DME, thence.... or, climb in visual conditions to cross Glacier Park Intl Airport southeast bound at or above 3800, then via FCA R-313 to FCA VOR/DME, thence....

TAKE-OFF RUNWAY 12: Climbing right turn direct FCA VOR/DME, thence....

TAKE-OFF RUNWAY 20: Climbing left turn direct FCA VOR/DME, thence....

....continue climb to 10,000 via FCA R-159 to SKOTT INT.

SKOTT ONE DEPARTURE (OBSTACLE)

KALISPELL, MONTANA
KALISPELL/GLACIER PARK INTL (GPI)

(SKOTT1.SKOTT) 09183

NW-1, 22 OCT 2009 to 19 NOV 2009

NW-1, 22 OCT 2009 to 19 NOV 2009