

WATTR FIVE DEPARTURE (OBSTACLE)

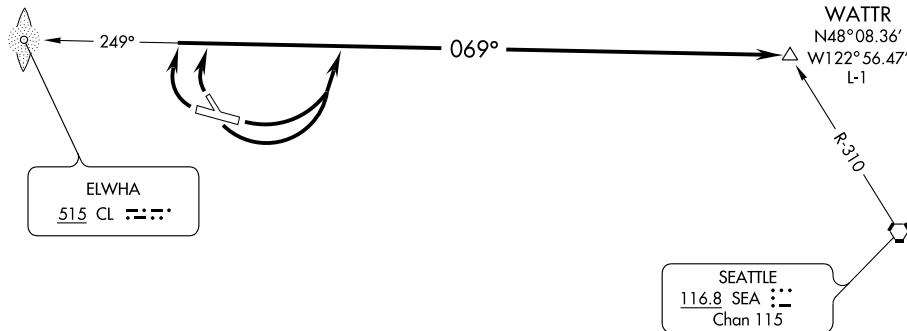
NAS WHIDBEY DEP CON
118.2 285.65
SEATTLE RADIO
122.6
CTAF 123.0

VICTORIA
113.7 YYJ
Chan 84
N48°43.62' - W123°29.06'
L-1, H-1

TAKE-OFF OBSTACLE NOTES

- Rwy 13: Multiple trees and pole beginning 1299' from DER, 32' left of centerline, up to 100' AGL/520' MSL.
Sign 76' from DER, 230' left of centerline, 5' AGL/276' MSL.
Hangar 1550' from DER, 457' left of centerline, 49' AGL/320' MSL.
OL on airport beacon 2023' from DER, 829' left of centerline, 74' AGL/345' MSL.
Multiple trees and pole beginning 614' from DER, 11' right of centerline, up to 100' AGL/599' MSL.
- Rwy 26: Multiple trees beginning 2940' from DER, 747' left of centerline, up to 95' AGL/378' MSL.
- Rwy 31: Multiple trees beginning 470' from DER, 39' left of centerline, up to 71' AGL/298' MSL.
Multiple trees beginning 640' from DER, 112' right of centerline, up to 63' AGL/290' MSL.
- Rwy 8: Multiple trees and poles beginning 130' from DER, 261' left of centerline, up to 124' AGL/415' MSL.
Multiple trees and poles beginning 923' from DER, 111' right of centerline, up to 232' AGL/479' MSL.
Hangar 212' from DER, 523' right of centerline, 19' AGL/310' MSL.

NW-1, 22 OCT 2009 to 19 NOV 2009



NW-1, 22 OCT 2009 to 19 NOV 2009

TAKE-OFF MINIMUMS

- Rwys 26, 31: Standard.
- Rwy 13: Standard with minimum climb of 454' per NM to 1100.
- Rwy 8: 300-1.

NOTE: Chart not to scale.

DEPARTURE ROUTE DESCRIPTION

TAKE-OFF RUNWAYS 8 and 13: Climbing left turn, thence....

TAKE-OFF RUNWAYS 26 and 31: Climbing right turn, thence....

...on 069° bearing from CL LOM to WATTR INT, maintain 5400.