

# RNAV (GPS) RWY 8

PORT ANGELES/ WILLIAM R. FAIRCHILD INTL (CLM)

WAAS CH <b>7703</b> <b>W08A</b>	APP CRS <b>082°</b>	Rwy Idg TDZE Apt Elev	<b>6347</b> <b>284</b> <b>291</b>
---------------------------------------	------------------------	-----------------------------	---

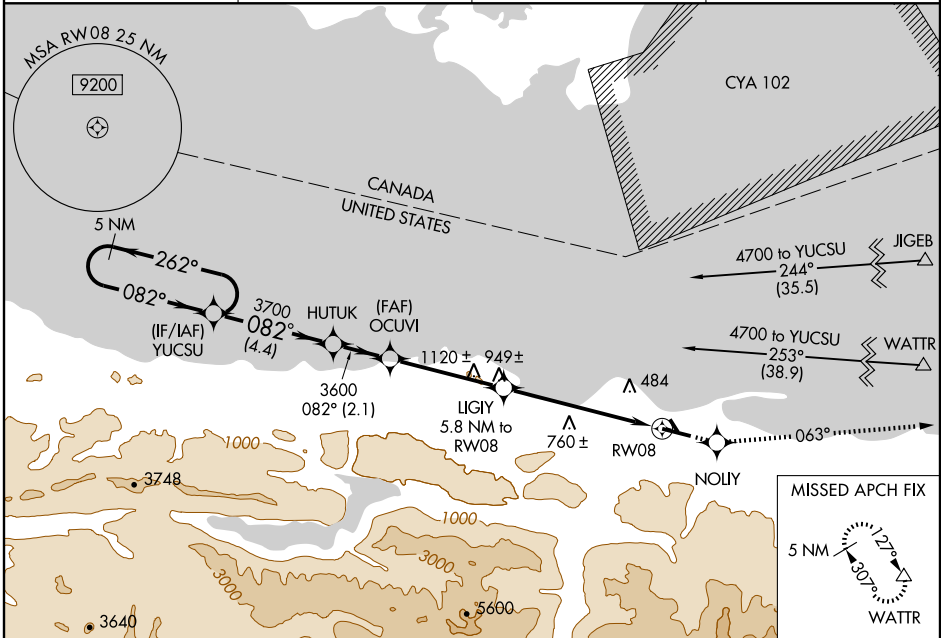
**⚠** Circling NA south of Rwy 8-26. DME/DME RNP- 0.3 NA.  
**⚠** If local altimeter setting not received, use Friday Harbor altimeter setting and increase all DAs/MDAs 100 feet.  
 VDP NA when using Friday Harbor altimeter setting.

MALSR



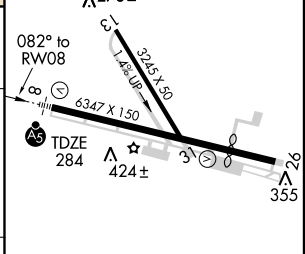
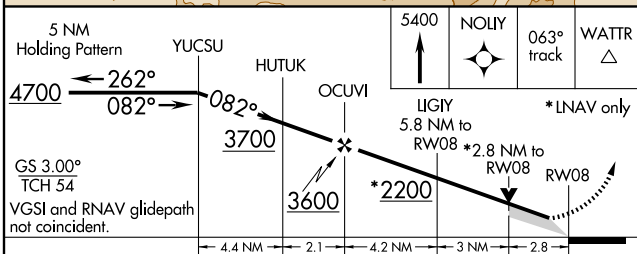
**MISSED APPROACH:** Climb to 5400 direct NOLLY and via 063° track to WATTR and hold, continue climb-in-hold to 5400.

ASOS <b>135.175</b>	WHIDBEY APP CON * <b>118.2 285.65</b>	CLNC DEL <b>124.15</b>	UNICOM <b>122.975 (CTAF) 1</b>
------------------------	--	---------------------------	-----------------------------------



NW-1, 22 OCT 2009 to 19 NOV 2009

NW-1, 22 OCT 2009 to 19 NOV 2009



CATEGORY	A	B	C	D
LPV DA	596-1/2 312 (400-1/2)			
RNAV MDA	1240-3/4 956 (1000-3/4)	1240-1 956 (1000-1)	1240-2 1/2	956 (1000-2 1/2)
CIRCLING	1240-1 1/4 949 (1000-1 1/4)	1240-1 1/2 949 (1000-1 1/2)	1240-3	949 (1000-3)

LIRL Rwy 13-31  
 MIRL Rwy 8-26 1  
 REIL Rwy 26