

TWIN FALLS, IDAHO

AL-885 (FAA)

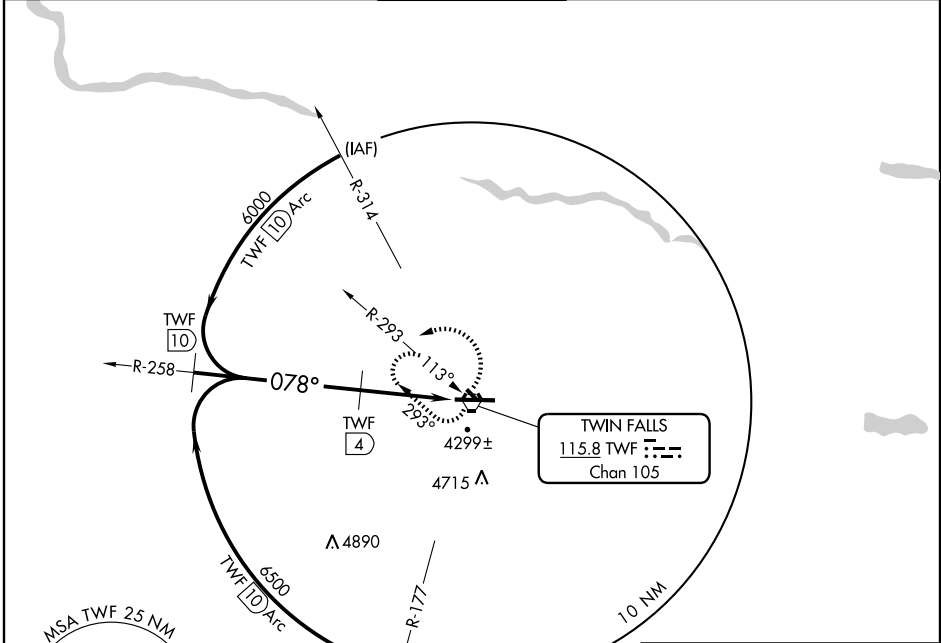
VORTAC TWF 115.8 Chan 105	APP CRS 078°	Rwy Idg TDZE Apt Elev	8703 4145 4151
---	------------------------	-----------------------------	---

VOR/DME RWY 7

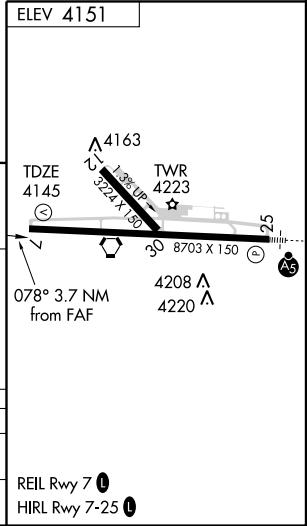
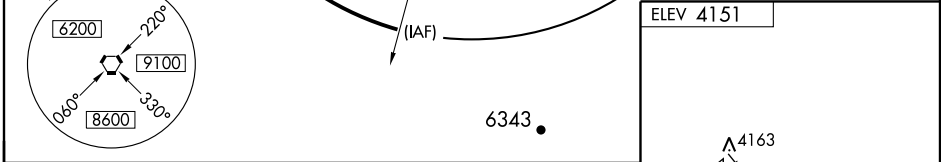
TWIN FALLS/JOSLIN FIELD-MAGIC VALLEY RGNL (TWF)

MISSED APPROACH: Climbing left turn to 6000 on TWF R-293 within 10 NM, return to VORTAC and hold.

ASOS 135.025	TWIN FALLS APP CON * 126.7 353.75	TWIN FALLS TOWER * 118.2 (CTAF) 317.5	GND CON 121.7	UNICOM 122.95
------------------------	---	---	-------------------------	-------------------------



NW-1, 22 OCT 2009 to 19 NOV 2009



CATEGORY	A	B	C	D
S-7	4560-1 415 (500-1)		4560-1½ 415 (500-1½)	
CIRCLING	4680-1	530 (600-1)	4680-1½ 530 (600-1½)	4740-2 590 (600-2)

TWIN FALLS, IDAHO
Orig-A 09239

TWIN FALLS/JOSLIN FIELD-MAGIC VALLEY RGNL (TWF)
42°29'N-114°29'W
VOR/DME RWY 7

REIL Rwy 7 **1**
HIRL Rwy 7-25 **1**