

TWIN FALLS, IDAHO

AL-885 (FAA)

VOR RWY 25

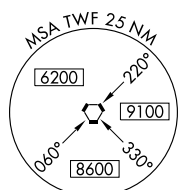
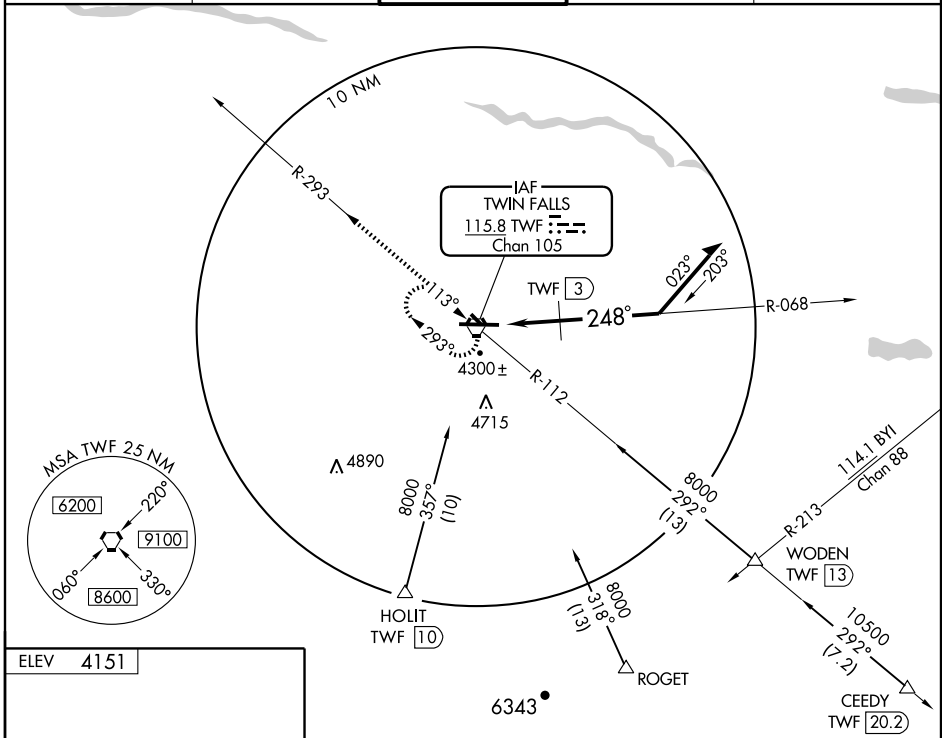
TWIN FALLS/JOSLIN FIELD-MAGIC VALLEY RGNL (TWF)

VORTAC TWF 115.8 Chan 105	APP CRS 248°	Rwy Idg 8703	TDZE 4150
		Apt Elev 4151	

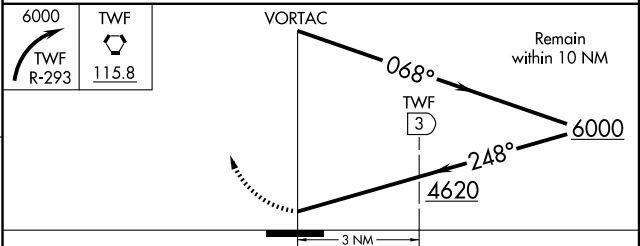
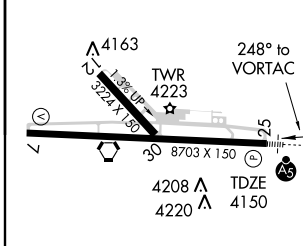
ASOS 135.025	TWIN FALLS APP CON * 126.7 353.75	TWIN FALLS TOWER * 118.2 (CTAF) 317.5	GND CON 121.7	UNICOM 122.95
------------------------	---	--	-------------------------	-------------------------



MISSED APPROACH: Climbing right turn to 6000 on R-293
TWF VORTAC within 10 NM, return to VORTAC and hold.



ELEV	4151
------	------



CATEGORY	A	B	C	D
S-25	4620-1/2	470 (500-1/2)	4620-3/4 470 (500-3/4)	4620-1 1/4 470 (500-1 1/4)
CIRCLING	4680-1	530 (600-1)	4680-1 1/2 530 (600-1 1/2)	4740-2 590 (600-2)
DME MINIMA				
S-25	4560-1/2 410 (500-1/2)			4560-1 410 (500-1)

REIL Rwy 7 **1**
HIRL Rwy 7-25 **1**

TWIN FALLS, IDAHO
Amdt 15A 09239

TWIN FALLS/JOSLIN FIELD-MAGIC VALLEY RGNL (TWF)
42°29'N-114°29'W
VOR RWY 25

NW-1, 22 OCT 2009 to 19 NOV 2009

NW-1, 22 OCT 2009 to 19 NOV 2009