

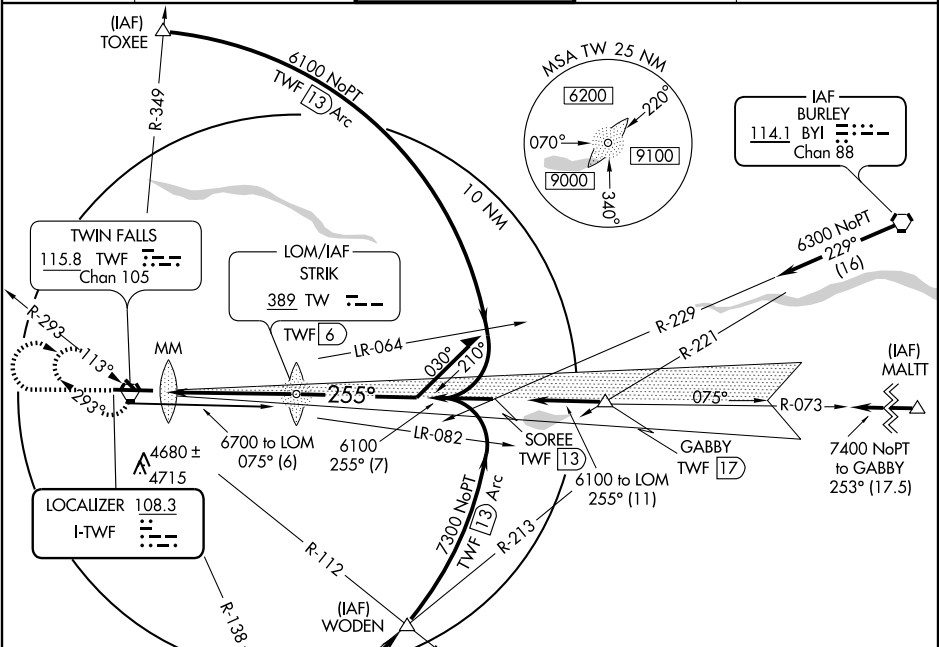
ILS RWY 25

TWIN FALLS/JOSLIN FIELD-MAGIC VALLEY RGNL (TWF)

LOC I-TWF 108.3	APP CRS 255°	Rwy ldg 8703 TDZE 4151 Apt Elev 4151
---------------------------	------------------------	---

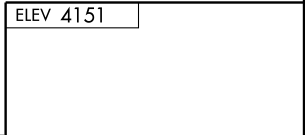
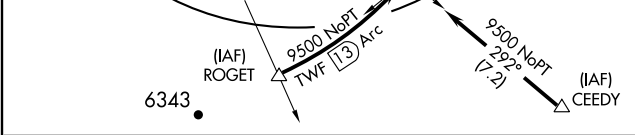
<p>⚠ For inoperative MALS/R, increase S-ILS Cat. E visibility to 1 mile and S-LOC Cat. D and E to 1 mile.</p>	<p>MALS/R</p>	<p>MISSED APPROACH: Climb to 5000 then climbing right turn to 6700 direct TWF VORTAC and hold.</p>
--	---------------	--

ASOS 135.025	TWIN FALLS APP CON * 126.7 353.75	TWIN FALLS TOWER * 118.2 (CTAF) 0317.5	GND CON 121.7	UNICOM 122.95
------------------------	---	--	-------------------------	-------------------------



NW-1, 22 OCT 2009 to 19 NOV 2009

NW-1, 22 OCT 2009 to 19 NOV 2009



5000	6700	TWF	LOM	Remain
↑	↷	115.8	TWF (6)	within 15 NM
			5879	
			075°	
			255°	
			6100	
			6100	
			GS 3.00°	
			TCH 55	
	0.5	4.7 NM		

CATEGORY	A	B	C	D	E
S-ILS 25	4351-½ 200 (200-½)				
S-LOC 25	4420-½ 269 (300-½)		4420-¾ 269 (300-¾)		
CIRCLING	4680-1 529 (600-1)		4680-1½ 529 (600-1½)	4760-2 609 (700-2)	5040-3 889 (900-3)

REIL Rwy 7	0
HIRL Rwy 7-25	0
FAF to MAP 5.2 NM	
Knots	60 90 120 150 180
Min:Sec	5:12 3:28 2:36 2:05 1:44

ILS RWY 25