

WAAS CH <b>77913</b> <b>W32A</b>	APP CRS <b>319°</b>	Rwy Idg TDZE Apt Elev	<b>7976</b> <b>222</b> <b>258</b>
--	------------------------	-----------------------------	---

# RNAV (GPS) RWY 32

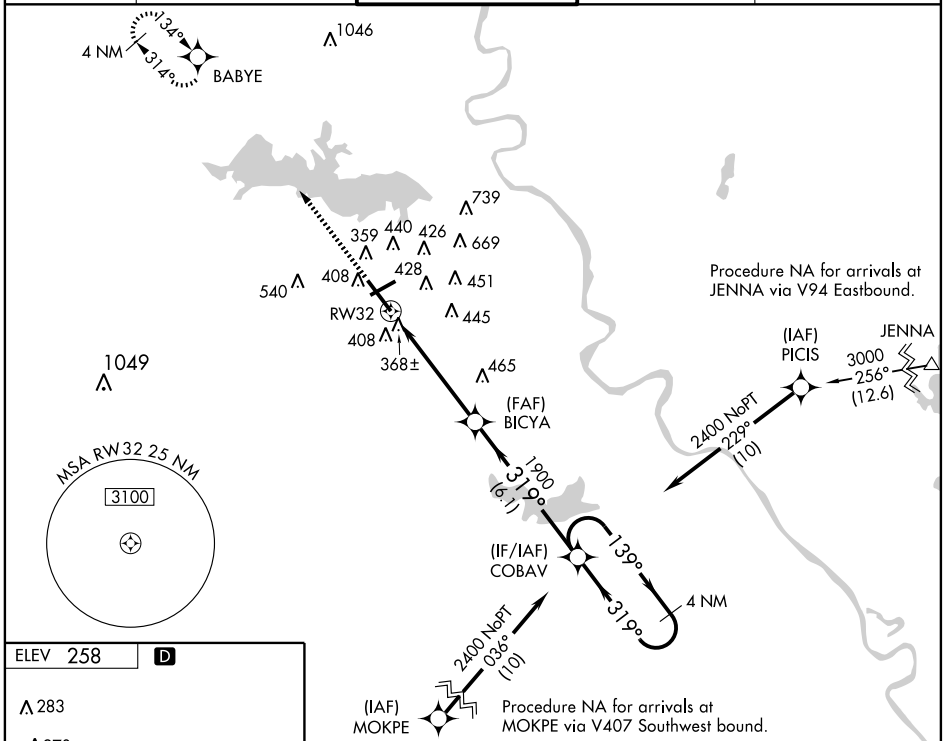
SHREVEPORT RGNL (SHV)

**ASR** Inoperative table does not apply to LPV all Cats. For inoperative MALSR, increase LNAV Cats. A and B visibility to RVR 5000. For uncompensated Baro-VNAV systems, LNAV/VNAV NA below -15°C (5°F) or above 48°C (118°F). DME/DME RNP-0.3 NA. Visibility reduction by helicopters NA.

**MALSR**

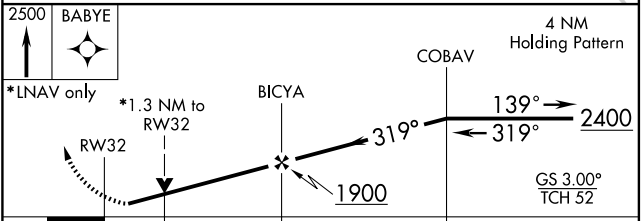
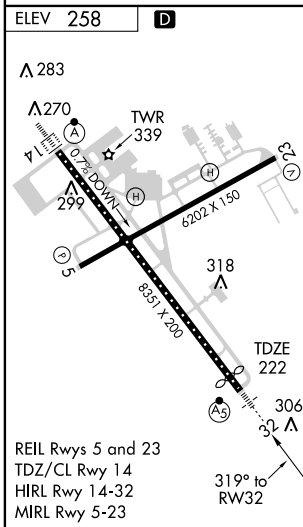
**MISSED APPROACH:** Climb to 2500 direct BABYE and hold.

ATIS <b>128.45</b>	SHREVEPORT APP CON <b>119.9 335.55</b>	SHREVEPORT TOWER <b>121.4 236.775</b>	GND CON <b>121.9 236.775</b>	CLNC DEL <b>124.65</b>
-----------------------	---	--	---------------------------------	---------------------------



SC-4, 22 OCT 2009 to 19 NOV 2009

SC-4, 22 OCT 2009 to 19 NOV 2009



CATEGORY	A	B	C	D
LPV DA		422/40	200 (200-¾)	
LNAV/VNAV DA		706/60	484 (500-1¼)	
LNAV MDA		680/40	458 (500-¾)	680/50 458 (500-1)
CIRCLING	800-1	542 (600-1)	800-1½ 542 (600-1½)	820-2 562 (600-2)