

RNAV (GPS) RWY 14

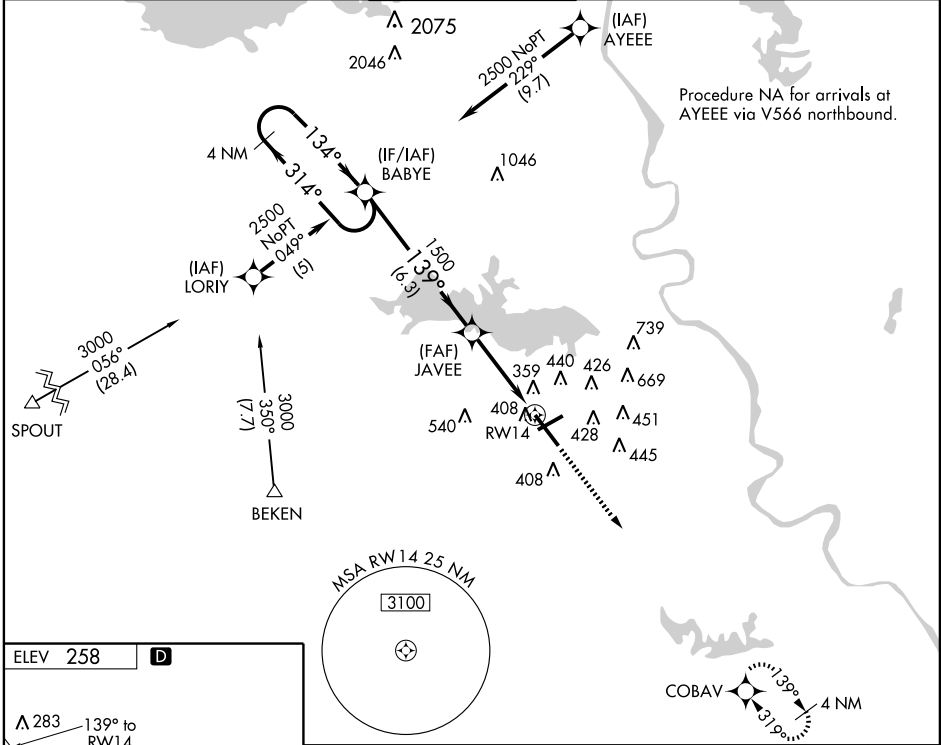
SHREVEPORT RGNL (SHV)

WAAS CH 45913 W14A	APP CRS 139°	Rwy Idg TDZE 258 Apt Elev 258	8351
----------------------------------------	------------------------	---------------------------------------------------	-------------

For inoperative ALSF, increase LNAV Cat. D visibility to RVR 6000. For uncompensated Baro-VNAV systems, LNAV/VNAV NA below -15°C (5°F) or above 47°C (116°F). DME/DME RNP-0.3 NA.

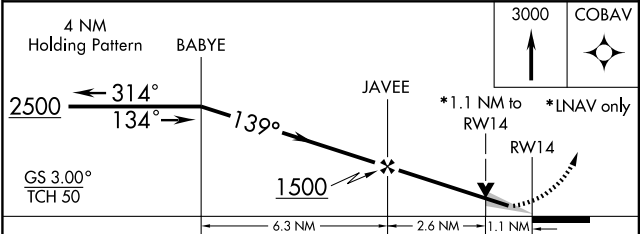
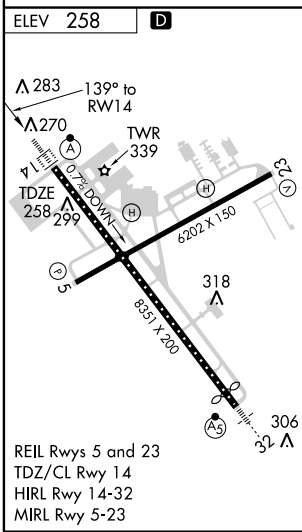
ALSF-2
MISSED APPROACH: Climb to 3000 direct COBAV and hold.

ATIS 128.45	SHREVEPORT APP CON 119.9 335.55	SHREVEPORT TOWER 121.4 236.775	GND CON 121.9 236.775	CLNC DEL 124.65
-----------------------	-------------------------------------------	------------------------------------------	---------------------------------	---------------------------



SC-4, 22 OCT 2009 to 19 NOV 2009

SC-4, 22 OCT 2009 to 19 NOV 2009



CATEGORY	A	B	C	D
LPV DA		458/24	200 (200-1/2)	
LNAV/VNAV DA		684/50	426 (500-1)	
LNAV MDA	660/24	402 (500-1/2)	660/40 402 (500-3/4)	660/50 402 (500-1)
CIRCLING	800-1	542 (600-1)	800-1 1/2 542 (600-1 1/2)	820-2 562 (600-2)