

# NDB or GPS-A

MONTAGUE/SISKIYOU COUNTY (SIY)

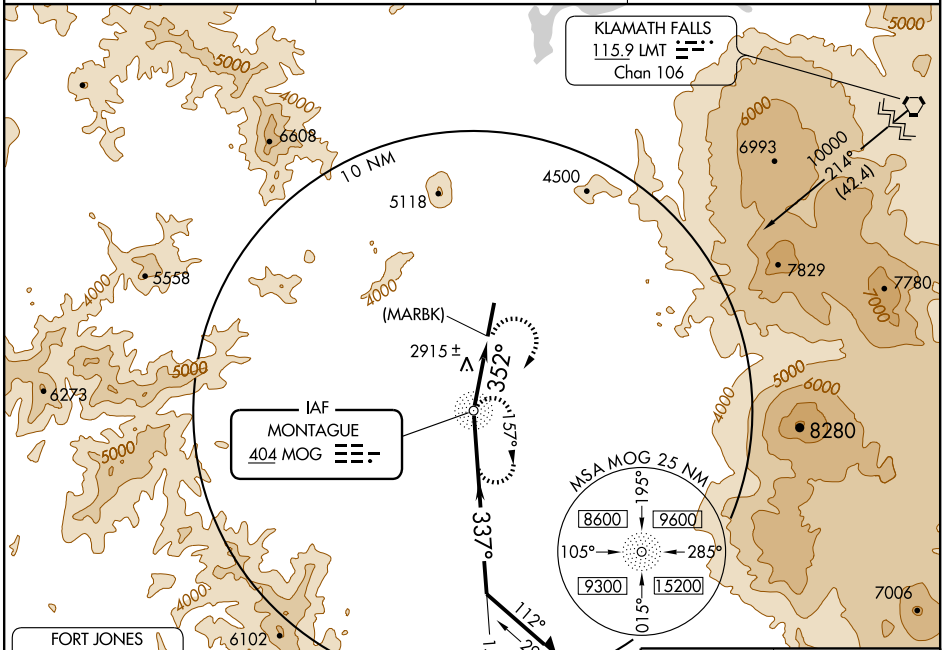
NDB MOG <b>404</b>	APP CRS <b>352°</b>	Rwy Idg TDZE Apt Elev	<b>N/A</b> <b>N/A</b> <b>2648</b>
-----------------------	------------------------	--------------------------	---

**▼** Use Siskiyou County altimeter setting; when not available, use Montague-Yreka Rohrer Field altimeter setting; when neither received, procedure not authorized.

**▲ NA**

**MISSED APPROACH:** Climbing right turn to 6800 direct MOG NDB and hold.

ASOS <b>121.125</b>	SEATTLE CENTER <b>124.85 306.3</b>	UNICOM <b>123.0 (CTAF)</b>
------------------------	---------------------------------------	-------------------------------

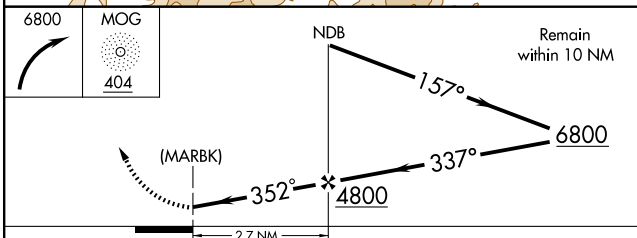
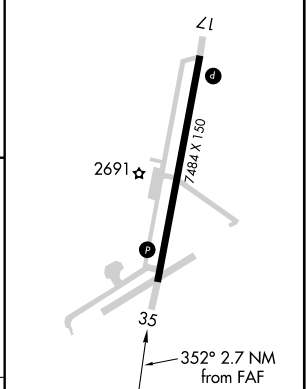


SW-2, 22 OCT 2009 to 19 NOV 2009

SW-2, 22 OCT 2009 to 19 NOV 2009



ELEV 2648	MIRL Rwy 17-35
	REIL Rws 17 and 35



CATEGORY	A	B	C	D	FAF to MAP 2.7 NM					
CIRCLING	3760-1¼ 1112 (1200-1¼)	3760-1½ 1112 (1200-1½)	3760-3	1112 (1200-3)	Knots	60	90	120	150	180
					Min:Sec	2:42	1:48	1:21	1:05	0:54