

DUNKIRK, NEW YORK

AL-880 (FAA)

VORTAC DKK <b>116.2</b> Chan <b>109</b>	APP CRS <b>070°</b>	Rwy Idg TDZE Apt Elev	<b>5000</b> <b>676</b> <b>693</b>
---	------------------------	-----------------------------	---

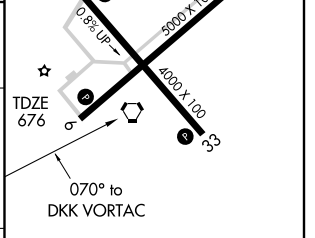
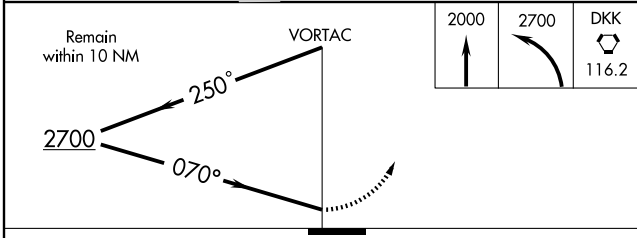
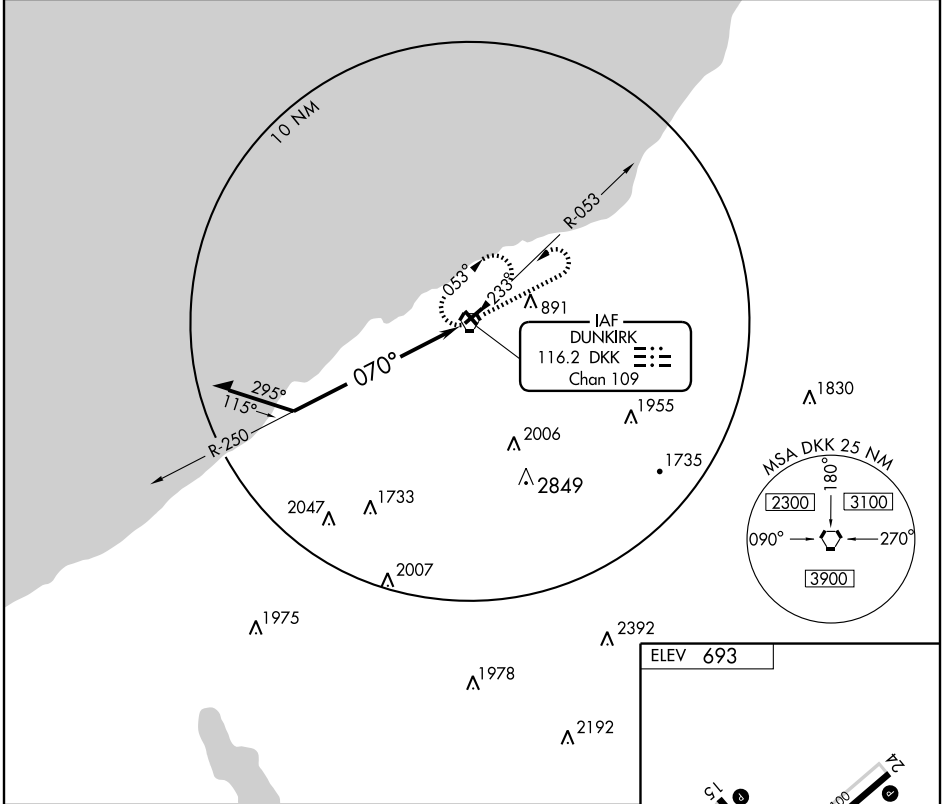
# VOR RWY 6

DUNKIRK/CHAUTAUQUA COUNTY/DUNKIRK (DKK)

**▽**  
**▲**

MISSED APPROACH: Climb to 2000, then climbing left turn to 2700 direct DKK VORTAC and hold.

ASOS <b>119.275</b>	BUFFALO APP CON <b>126.5 317.6</b>	UNICOM <b>123.075 (CTAF)</b> <b>0</b>
------------------------	---------------------------------------	--



CATEGORY	A	B	C	D
S-6	1320-1 644 (700-1)		1320-1¾ 644 (700-1¾)	1320-2 644 (700-2)
CIRCLING	1320-1 627 (700-1)		1320-1¾ 627 (700-1¾)	1540-2¾ 847 (900-2¾)

REIL Rwy 6 and 24 **0**

MIRL Rwy 6-24 and 15-33 **0**

Knots	60	90	120	150	180
Min:Sec					

DUNKIRK, NEW YORK  
Amdt 2 05356

DUNKIRK/CHAUTAUQUA COUNTY/DUNKIRK (DKK)  
42°30'N-79°16'W

# VOR RWY 6

NE-2, 22 OCT 2009 to 19 NOV 2009

NE-2, 22 OCT 2009 to 19 NOV 2009