

DUNKIRK, NEW YORK

AL-880 (FAA)

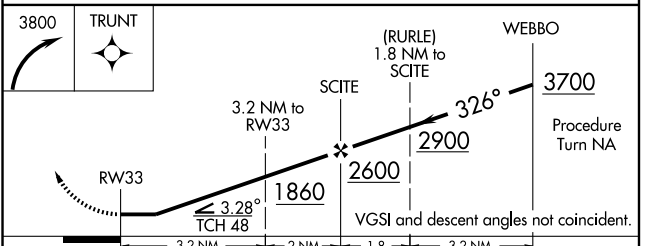
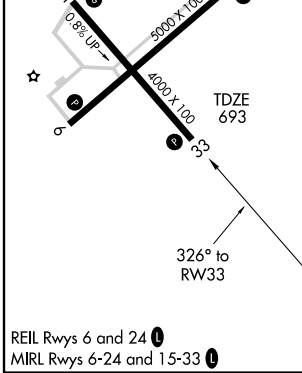
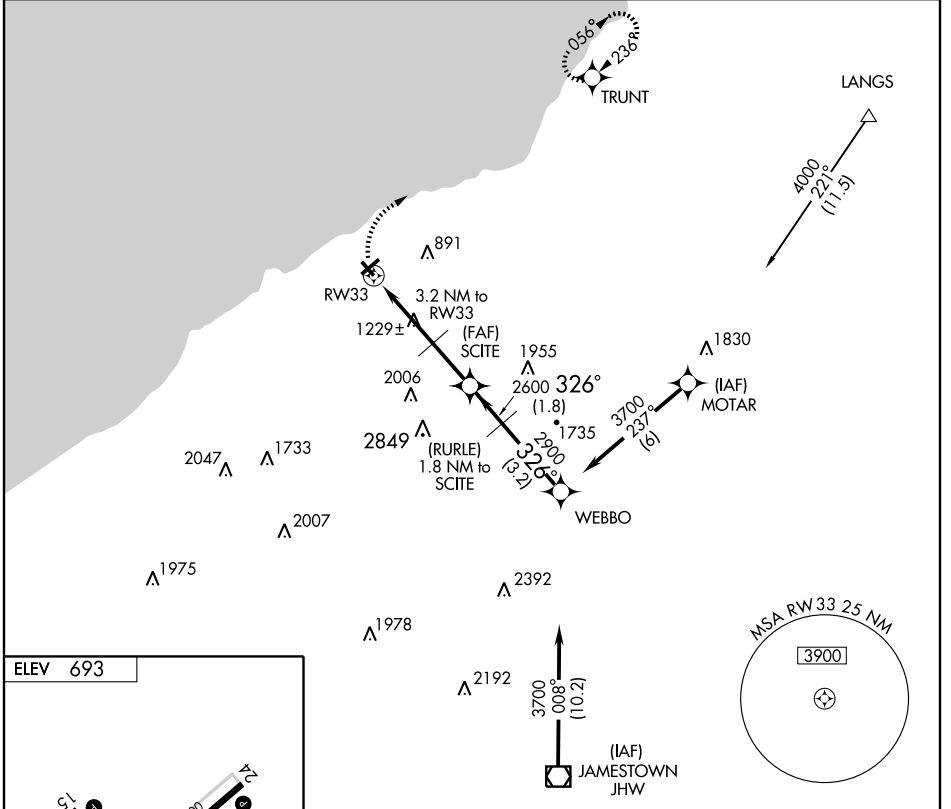
GPS RWY 33

DUNKIRK/CHAUTAUQUA COUNTY/DUNKIRK (DKK)

APP CRS 326°	Rwy Idg TDZE Apt Elev	4000 693 693
------------------------	-----------------------------	---

NA	MISSED APPROACH: Climbing right turn to 3800 direct TRUNT WP and hold.
----	--

ASOS 119.275	BUFFALO APP CON 126.5 317.6	UNICOM 123.075 (CTAF) 0
------------------------	---------------------------------------	-----------------------------------



CATEGORY	A	B	C	D
S-33	1480-1 787 (800-1)	1480-1¼ 787 (800-1¼)	1480-2¼ 787 (800-2¼)	1480-2½ 787 (800-2½)
CIRCLING	1480-1 787 (800-1)	1480-1¼ 787 (800-1¼)	1480-2¼ 787 (800-2¼)	1540-2¾ 847 (900-2¾)

DUNKIRK, NEW YORK
Orig 05356

DUNKIRK/CHAUTAUQUA COUNTY/DUNKIRK (DKK)
42°30'N-79°16'W

GPS RWY 33

NE-2, 22 OCT 2009 to 19 NOV 2009

NE-2, 22 OCT 2009 to 19 NOV 2009