

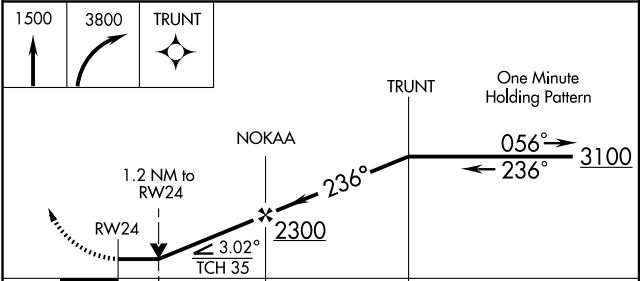
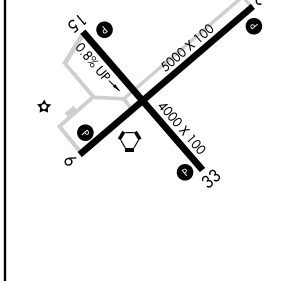
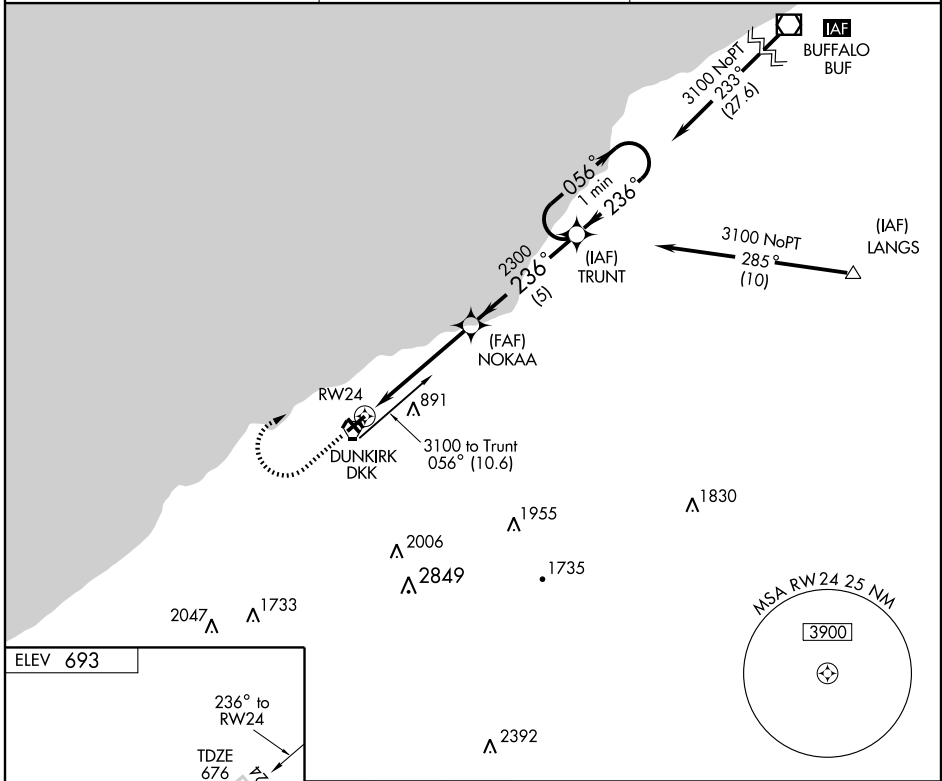
GPS RWY 24

DUNKIRK/CHAUTAUGUA COUNTY/DUNKIRK (DKK)

APP CRS 236°	Rwy Idg TDZE Apt Elev	5000 676 693
------------------------	-----------------------------	---

<p>NA IAF ARM APPROACH MODE PRIOR TO IAF.</p>	<p>MISSED APPROACH: Climb to 1500, then climbing right turn to 3800 direct TRUNT WP and hold.</p>
---	---

ASOS 119.275	BUFFALO APP CON 126.5 317.6	UNICOM 123.075 (CTAF)
------------------------	---------------------------------------	---------------------------------



CATEGORY	A	B	C	D
S-24	1080-1	404 (400-1)	1080-1¼	404 (400-1¼)
CIRCLING	1220-1 527 (600-1)	1240-1 547 (600-1)	1280-1½ 587 (600-1½)	1540-2¾ 847 (900-2¾)

REIL Rwy 6 and 24
MIRL Rwy 6-24 and 15-33

GPS RWY 24

NE-2, 22 OCT 2009 to 19 NOV 2009

NE-2, 22 OCT 2009 to 19 NOV 2009