

# RNAV (GPS) RWY 1

VICKSBURG MUNI (VKS)

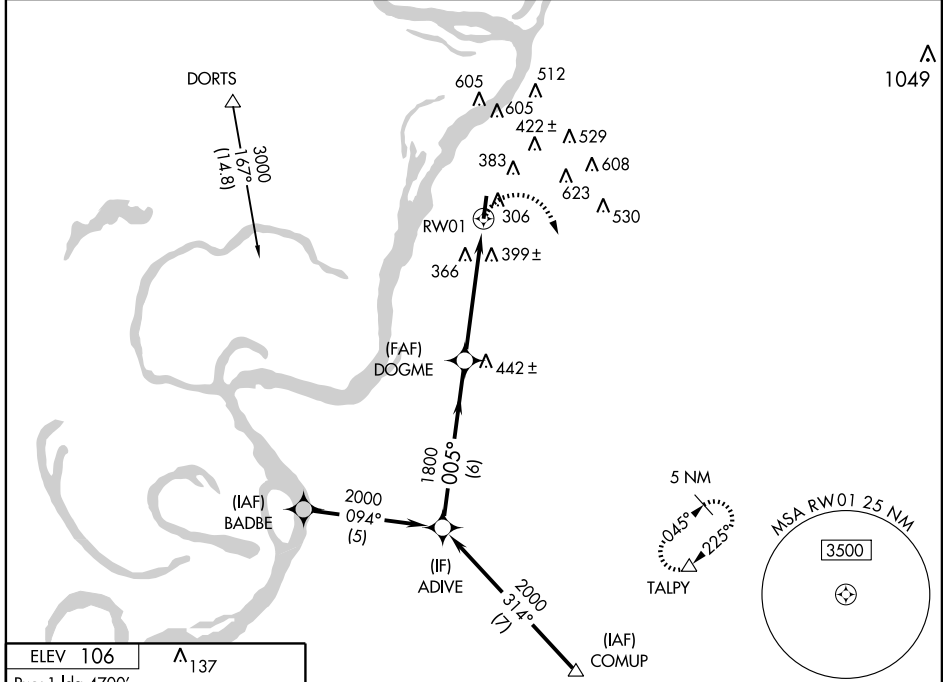
APP CRS <b>005°</b>	Rwy Idg <b>4700</b>
	TDZE <b>103</b>
	Apt Elev <b>106</b>

**▼** DME/DME RNP-0.3 NA. VDP NA when using Vicksburg Tallulah Regional altimeter setting. Obtain local altimeter setting on CTAF; when not received, use Vicksburg Tallulah Regional altimeter setting.

**▲** NA

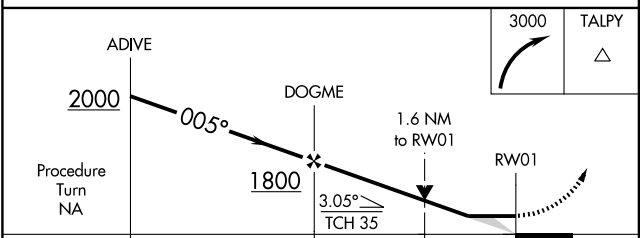
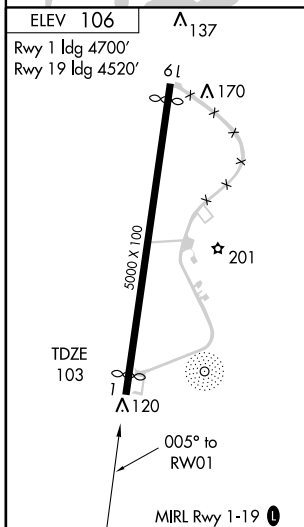
**MISSED APPROACH:** Climbing right turn to 3000 direct TALPY and hold.

MEMPHIS CENTER <b>132.5 259.1</b>	UNICOM <b>122.8 (CTAF) 0</b>
--------------------------------------	---------------------------------



SC-4, 22 OCT 2009 to 19 NOV 2009

SC-4, 22 OCT 2009 to 19 NOV 2009



CATEGORY	A	B	C	D
LNAV MDA	660-1	557 (600-1)	660-1½ 557 (600-1½)	660-1¾ 557 (600-1¾)
CIRCLING	700-1	594 (600-1)	700-1½ 594 (600-1½)	1060-3 954 (1000-3)
<b>VICKSBURG TALLULAH REGIONAL ALTIMETER SETTING MINIMUMS</b>				
LNAV MDA	680-1	577 (600-1)	680-1½ 577 (600-1½)	680-1¾ 577 (600-1¾)
CIRCLING	740-1	634 (700-1)	740-1¾ 634 (700-1¾)	1100-3 994 (1000-3)