

WAAS CH 78315 W18A	APP CRS 182°	Rwy Idg TDZE Apt Elev	5011 294 294
--	------------------------	-----------------------------	---

RNAV (GPS) RWY 18

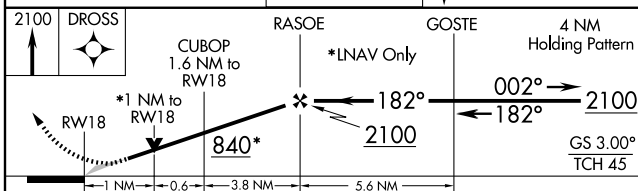
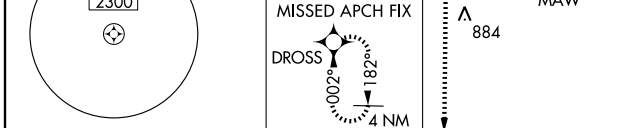
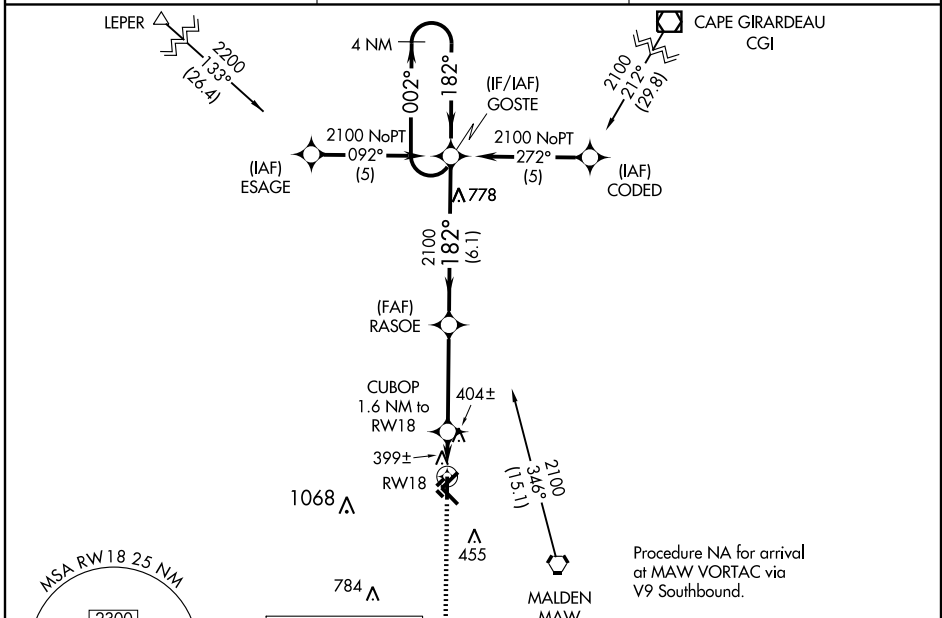
MALDEN RGNL (MAW)

▼ DME/DME RNP-0.3 NA. For uncompensated Baro-VNAV systems, LNAV/VNAV NA below -15°C (5°F) or above 54°C (130°F). Baro-VNAV and VDP NA when using Poplar Bluff altimeter setting.

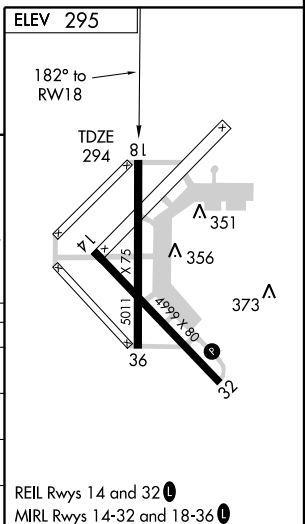
▲ NA When local altimeter setting not received, use Poplar Bluff altimeter setting and increase all DA 50 feet, all MDA 60 feet, LNAV/VNAV all Cats and LNAV Cat C visibility ¼ mile.

MISSED APPROACH: Climb to 2100 direct DROSS and hold.

AWOS-3 119.825	MEMPHIS CENTER 133.65 292.15	UNICOM 122.8 (CTAF) 0
--------------------------	--	---------------------------------



CATEGORY	A	B	C	D
LPV DA	544-1	250 (300-1)		NA
LNAV/VNAV DA	669-1¼	375 (400-1¼)		NA
LNAV MDA	660-1	366 (400-1)		NA
CIRCLING	720-1 426 (500-1)	820-1 526 (600-1)	820-1½ 526 (600-1½)	NA



NC-3, 22 OCT 2009 to 19 NOV 2009

NC-3, 22 OCT 2009 to 19 NOV 2009