

PLAINVIEW, TEXAS

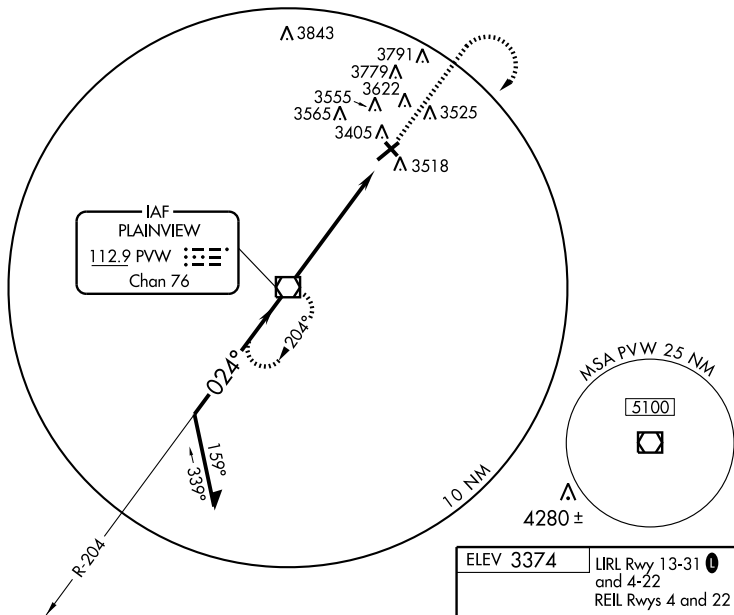
AL-876 (FAA)

VOR/DME PVW 112.9 Chan 76	APP CRS 024°	Rwy Idg 5997 TDZE 3374 Apt Elev 3374
---	------------------------	---

VOR RWY 4

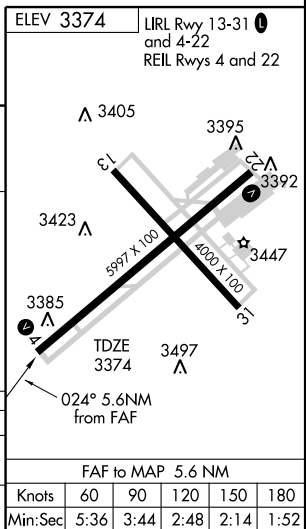
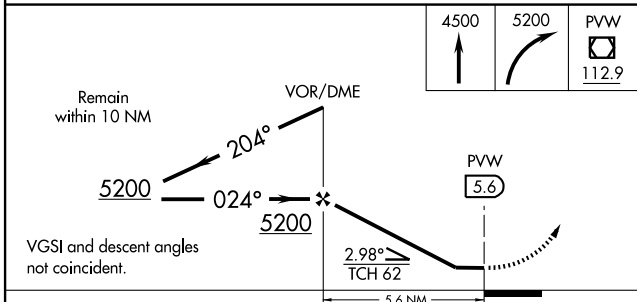
PLAINVIEW/ HALE COUNTY (PVW)

<p>▲ NA</p>		<p>MISSED APPROACH: Climb to 4500, then climbing right turn to 5200 direct PVW VOR/DME and hold.</p>	
ASOS 119.675	LUBBOCK APP CON 119.2 351.8	CINC DEL 121.7	UNICOM 123.0 (CTAF) 0



SC-2, 22 OCT 2009 to 19 NOV 2009

SC-2, 22 OCT 2009 to 19 NOV 2009



CATEGORY	A	B	C	D
S-4	3840-1 486 (500-1)	466 (500-1)	3840-1½ 466 (500-1½)	3840-1½ 466 (500-1½)
CIRCLING	3860-1 486 (500-1)	3940-1 566 (600-1)	3940-1½ 566 (600-1½)	3940-2 566 (600-2)

FAF to MAP 5.6 NM					
Knots	60	90	120	150	180
Min:Sec	5:36	3:44	2:48	2:14	1:52

PLAINVIEW, TEXAS
Amdt 9B 05244

34°10'N-101°43'W

VOR RWY 4