

SIDNEY, NEBRASKA

AL-875 (FAA)

VORTAC SNY 115.9 Chan 106	APP CRS 293°	Rwy Idg TDZE Apt Elev	6600 4290 4313
---	------------------------	-----------------------------	---

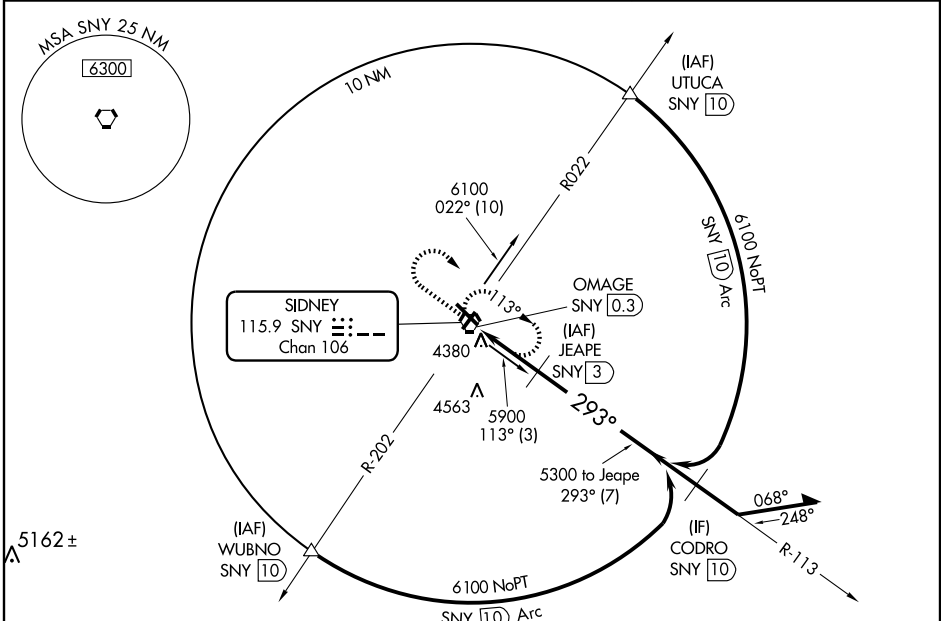
VOR/DME or TACAN RWY 31

SIDNEY MUNI/LLOYD W. CARR FIELD (SNY)

▼ When local altimeter setting not received, use Kimball altimeter setting and increase all MDA 160 feet and increase S-31 Cat C and D visibility ½ mile. VDP NA when using Kimball altimeter setting.

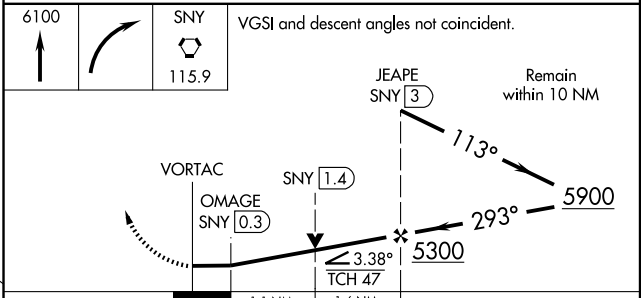
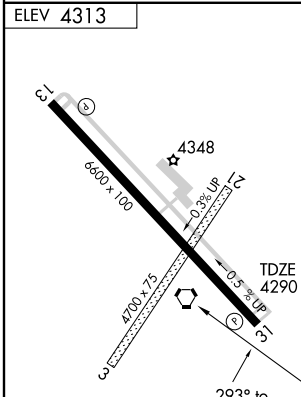
MISSED APPROACH: Climb to 6100 then right turn direct SNY VORTAC and hold. (TACAN AIRCRAFT: Climbing right turn to 7000 via SNY R-322 to JENUK/20 DME and hold Northwest, right turn, 142° inbound.)

ASOS 125.775	DENVER CENTER 118.475 225.4	UNICOM 122.8 (CTAF) 0
------------------------	---------------------------------------	---------------------------------



NC-2, 22 OCT 2009 to 19 NOV 2009

NC-2, 22 OCT 2009 to 19 NOV 2009



CATEGORY	A	B	C	D
S-31	4680-1	390 (400-1)		4680-1½ 390 (400-1½)
CIRCLING	4760-1 447 (500-1)	4780-1 467 (500-1)	4780-1½ 467 (500-1½)	4880-2 567 (600-2)

SIDNEY, NEBRASKA
Amdt 5 08213

41°06' N-102°59' W

SIDNEY MUNI/LLOYD W. CARR FIELD (SNY) VOR/DME or TACAN RWY 31