

SIDNEY, NEBRASKA

AL-875 (FAA)

|   |                        |   |
|---|------------------------|---|
| VORTAC SNY<br><b>115.9</b><br>Chan <b>106</b> | APP CRS<br><b>293°</b> | Rwy Idg<br>TDZE <b>4290</b><br>Apt Elev <b>4313</b> |
|---|------------------------|---|

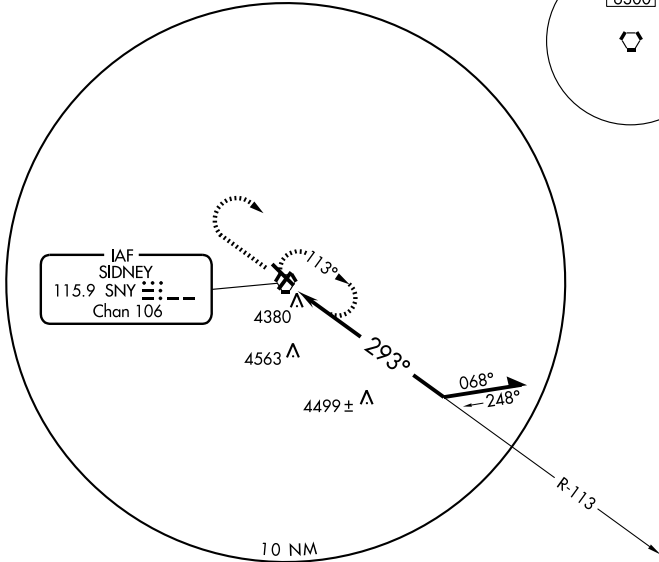
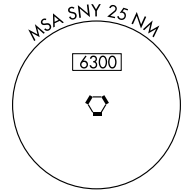
# VOR RWY 31

SIDNEY MUNI/LLOYD W. CARR FIELD (SNY)

⚠ When local altimeter setting not received, use Kimball altimeter setting and increase all MDA 160 feet, increase S-31 Cat C and D, circling Cat C visibility ½ mile, circling Cat D visibility ¼ mile. VDP NA when using Kimball altimeter setting.

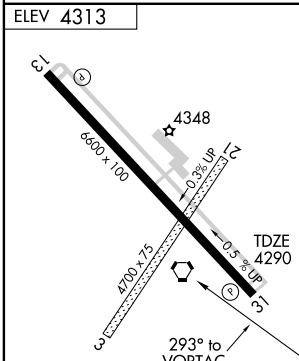
MISSED APPROACH: Climb to 6100 then right turn direct SNY VORTAC and hold.

|                        |                                       |                                 |
|------------------------|---------------------------------------|---------------------------------|
| ASOS<br><b>125.775</b> | DENVER CENTER<br><b>118.475 225.4</b> | UNICOM<br><b>122.8 (CTAF) 1</b> |
|------------------------|---------------------------------------|---------------------------------|



NC-2, 22 OCT 2009 to 19 NOV 2009

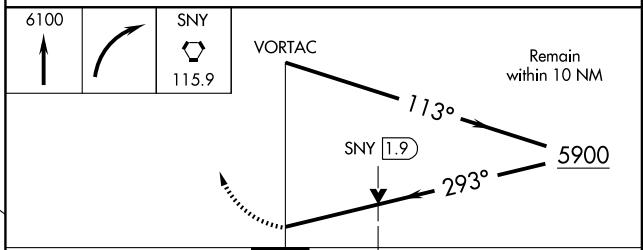
NC-2, 22 OCT 2009 to 19 NOV 2009



ELEV 4313

REIL Rwy 13 and 31 1  
HIRL Rwy 13-31 1

|         |    |    |     |     |     |
|---------|----|----|-----|-----|-----|
| Knots   | 60 | 90 | 120 | 150 | 180 |
| Min:Sec |    |    |     |     |     |



| CATEGORY | A      | B           | C                       | D                       |
|----------|--------|-------------|-------------------------|-------------------------|
| S-31     | 4840-1 | 550 (600-1) | 4840-1½<br>550 (600-1½) | 4840-1¾<br>550 (600-1¾) |
| CIRCLING | 4840-1 | 527 (600-1) | 4840-1½<br>527 (600-1½) | 4880-2<br>567 (600-2)   |

SIDNEY, NEBRASKA  
Amdt 7 08213

SIDNEY MUNI/LLOYD W. CARR FIELD (SNY)  
41°06' N-102°59' W  
**VOR RWY 31**