

SIDNEY, NEBRASKA

AL-875 (FAA)

WAAS CH <b>86303</b> <b>W31A</b>	APP CRS <b>304°</b>	Rwy Idg TDZE Apt Elev	<b>6600</b> <b>4290</b> <b>4313</b>
--	------------------------	-----------------------------	---

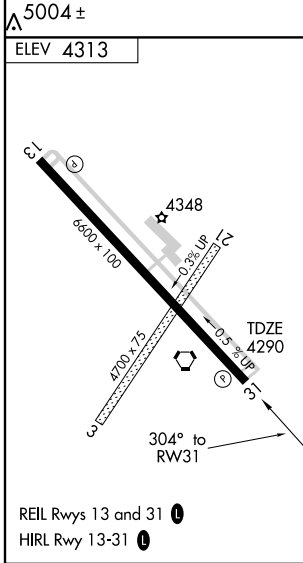
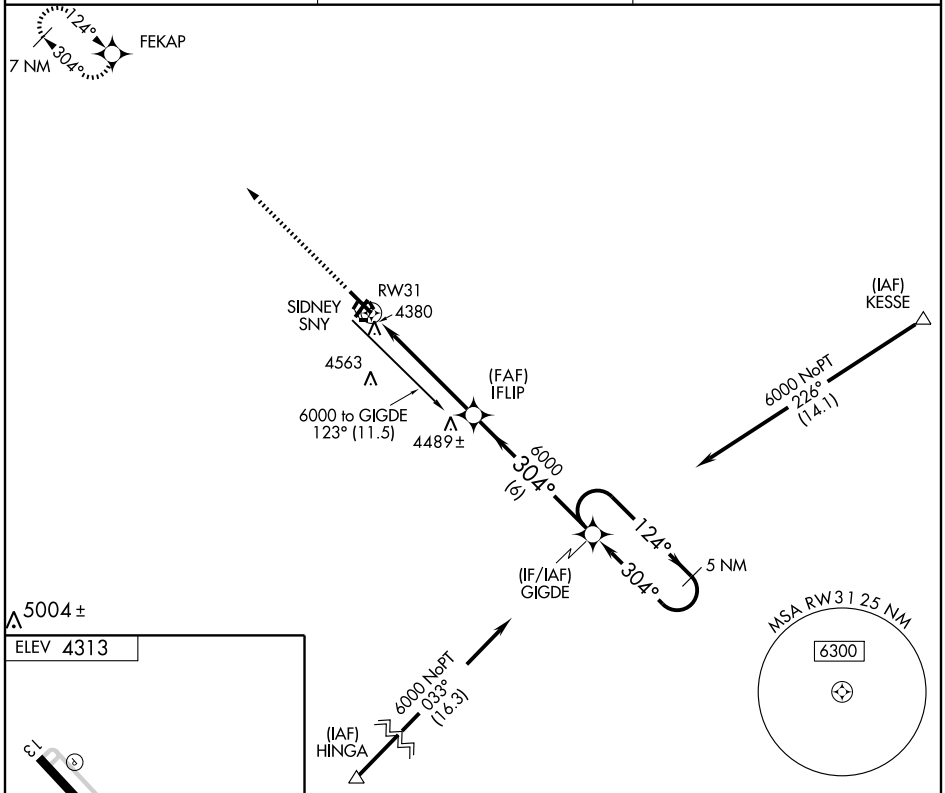
# RNAV (GPS) RWY 31

SIDNEY MUNI/LLOYD W. CARR FIELD (SNY)

**▼** When local altimeter setting not received, use Kimball altimeter setting and increase all DA/MDA 160 feet, increase LPV all Cats visibility ½ mile, LNAV Cats C and D visibility ½ mile, circling Cats C and D ¼ mile. VDP NA when using Kimball altimeter setting. DME/DME RNP-0.3 NA.

**▲** MISSED APPROACH: Climb to 6500 direct FEKAP and hold.

ASOS <b>125.775</b>	DENVER CENTER <b>118.475 225.4</b>	UNICOM <b>122.8 (CTAF) 0</b>
------------------------	---------------------------------------	---------------------------------



6500	FEKAP	IFIP	GIGDE	5 NM Holding Pattern
*1.3 NM to RWY 31		*LNAV only		
RWY 31		304°		124°
1.3 NM		3.9 NM		6 NM
CATEGORY	A	B	C	D
LPV DA	4540-1		250 (300-1)	
LNAV MDA	4740-1	450 (500-1)	4740-1¼ 450 (500-1¼)	4740-1½ 450 (500-1½)
CIRCLING	4760-1 447 (500-1)	4780-1 467 (500-1)	4780-1½ 467 (500-1½)	4880-2 567 (600-2)

SIDNEY, NEBRASKA  
Amdt 2 08213

41° 06' N-102° 59' W SIDNEY MUNI/LLOYD W. CARR FIELD (SNY)

# RNAV (GPS) RWY 31

NC-2, 22 OCT 2009 to 19 NOV 2009

NC-2, 22 OCT 2009 to 19 NOV 2009