

SIDNEY, NEBRASKA

AL-875 (FAA)

WAAS CH 82303 W13A	APP CRS 124°	Rwy Idg TDZE Apt Elev	6600 4313 4313
--	------------------------	-----------------------------	---

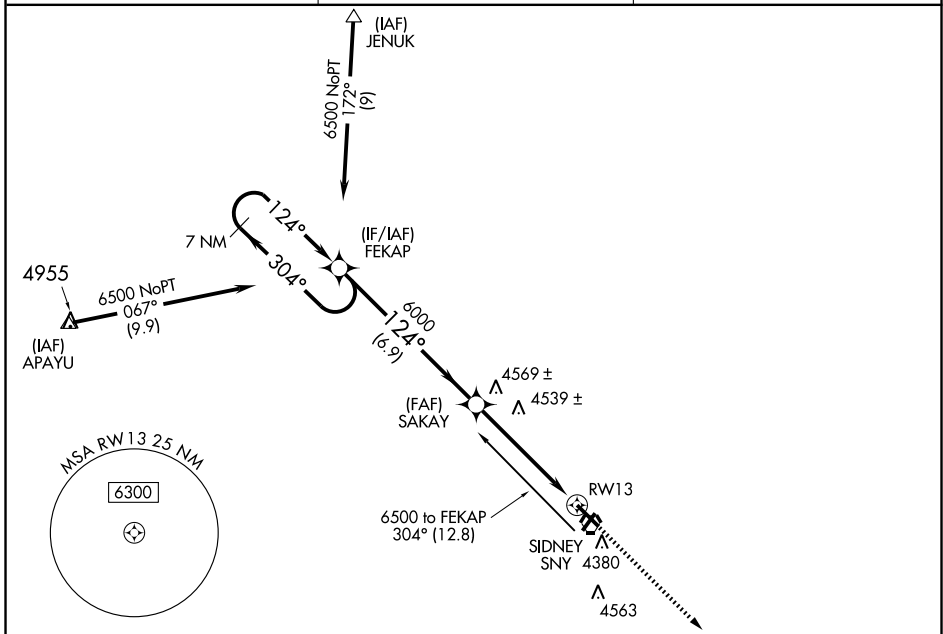
RNAV (GPS) RWY 13

SIDNEY MUNI/LLOYD W. CARR FIELD (SNY)

⚠ When local altimeter setting not received, use Kimball altimeter setting and increase all DA/MDA 160 feet, and increase LPV all Cats visibility ¼ mile, LNAV Cats C and D visibility ½ mile and circling Cats C and D visibility ½ mile. VDP NA when using Kimball altimeter setting. DME/DME RNP-0.3 NA.

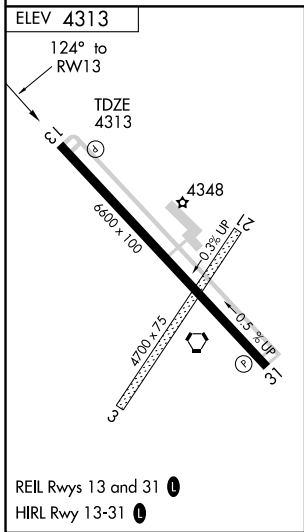
MISSED APPROACH: Climb to 6000 direct GIGDE and hold.

ASOS 125.775	DENVER CENTER 118.475 225.4	UNICOM 122.8 (CTAF) 0
------------------------	---------------------------------------	---------------------------------

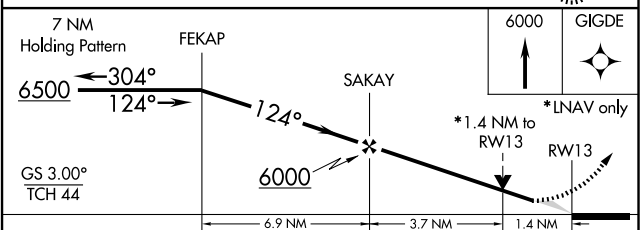


NC-2, 22 OCT 2009 to 19 NOV 2009

NC-2, 22 OCT 2009 to 19 NOV 2009



Procedure NA for arrivals at SNY VORTAC via V138 eastbound.



CATEGORY	A	B	C	D
LPV DA		4563-¾	250 (300-¾)	
LNAV MDA	4800-1	487 (500-1)	4800-1¼ 487 (500-1¼)	4800-1½ 487 (500-1½)
CIRCLING	4800-1	487 (500-1)	4800-1½ 487 (500-1½)	4880-2 567 (600-2)

SIDNEY, NEBRASKA
Amdt 2 08213

41° 06' N-102° 59' W SIDNEY MUNI/LLOYD W. CARR FIELD (SNY)
RNAV (GPS) RWY 13