

GREEN BAY, WISCONSIN

AL-873 (FAA)

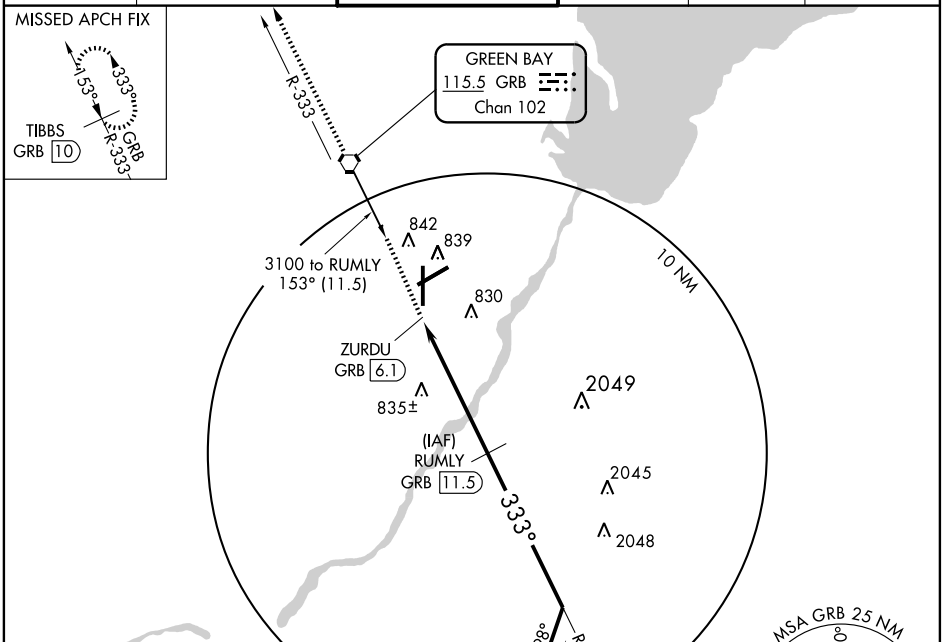
# VOR/DME or TACAN RWY 36

GREEN BAY/AUSTIN STRAUBEL INTL (GRB)

VORTAC GRB <b>115.5</b> Chan <b>102</b>	APP CRS <b>333°</b>	Rwy Idg <b>8701</b> TDZE <b>684</b> Apt Elev <b>695</b>
---	------------------------	--

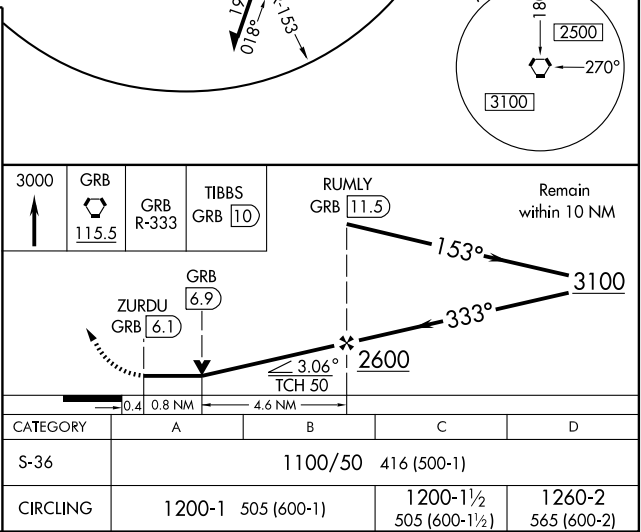
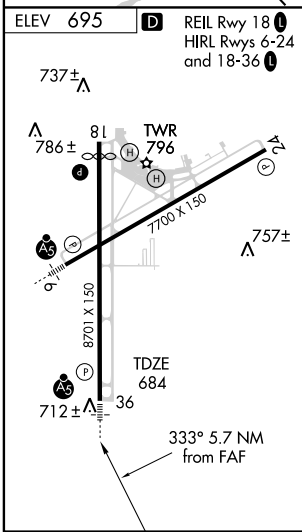
<p>ASR</p> <p>Inoperative table does not apply.</p>	<p>MALSR</p>	<p>MISSED APPROACH: Climb to 3000 direct GRB VORTAC then via GRB VORTAC R-333 to TIBBS/GRB 10 DME and hold.</p>
---	--------------	---

ATIS <b>124.1</b>	GREEN BAY APP CON * <b>119.4 338.2</b>	GREEN BAY TOWER * <b>118.7(CTAF) 257.8</b>	GND CON <b>121.9</b>	CLNC DEL <b>121.75</b>	UNICOM <b>122.95</b>
----------------------	---	---	-------------------------	---------------------------	-------------------------



EC-3, 22 OCT 2009 to 19 NOV 2009

EC-3, 22 OCT 2009 to 19 NOV 2009



GREEN BAY, WISCONSIN  
Amdt 10 09267

44°29'N - 88°08'W

# VOR/DME or TACAN RWY 36

GREEN BAY/AUSTIN STRAUBEL INTL (GRB)