

WAAS CH 63015 W06A	APP CRS 062°	Rwy Idg 7700 TDZE 692 Apt Elev 695
--	------------------------	---

RNAV (GPS) RWY 6

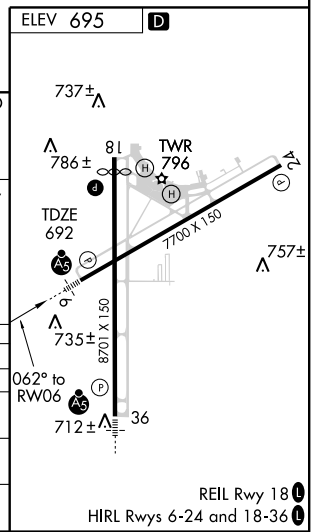
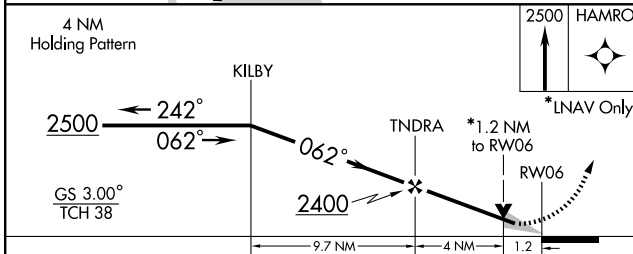
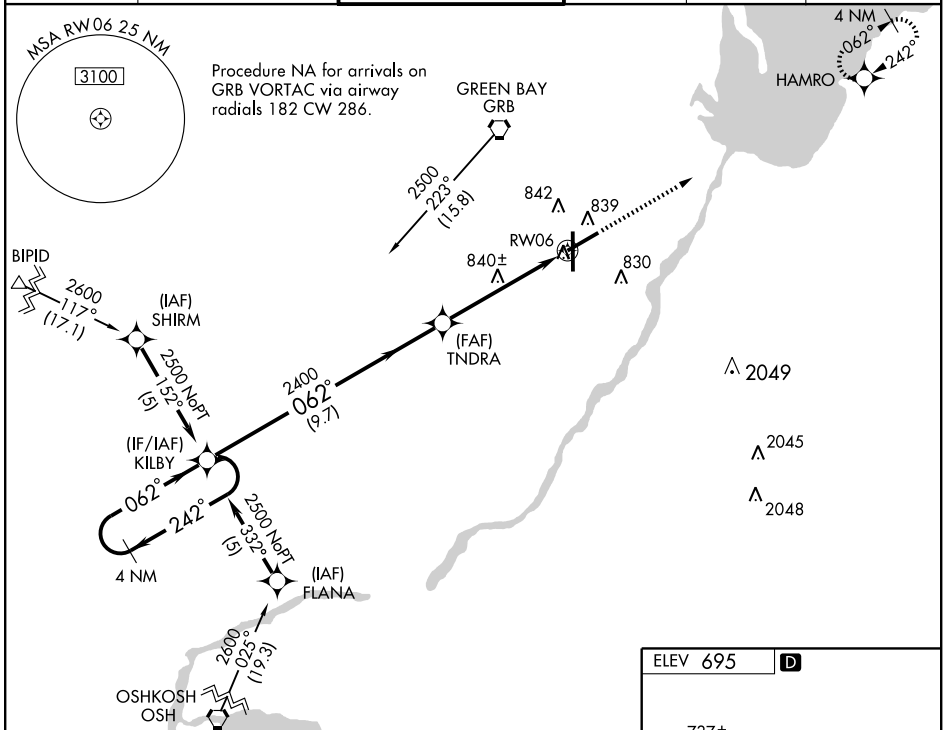
GREEN BAY/AUSTIN STRAUBEL INTL (GRB)

▼ For uncompensated Baro-VNAV systems, LNAV/VNAV NA below -1.6°C (4°F) or above 47°C (116°F). DME/DME RNP-0.3 NA. For inoperative MALSR, increase ASR LNAV/VNAV Cat D visibility to RVR 5000 and LNAV Cat D visibility to RVR 6000.

MALSR

MISSED APPROACH: Climb to 2500 direct HAMRO and hold.

ATIS 124.1	GREEN BAY APP CON* 119.4 338.2	GREEN BAY TOWER* 118.7 (CTAF) 257.8	GND CON 121.9	CLNC DEL 121.75	UNICOM 122.95
----------------------	--	---	-------------------------	---------------------------	-------------------------



CATEGORY	A	B	C	D
LPV DA		892/24		200 (200-½)
LNAV/VNAV DA	1000/24	308 (400-½)		1000/40 308 (400-¾)
LNAV MDA	1100/24	408 (500-½)		1100/50 408 (500-1)
CIRCLING	1200-1	505 (600-1)	1200-1½ 505 (600-1½)	1260-2 565 (600-2)

EC-3, 22 OCT 2009 to 19 NOV 2009

EC-3, 22 OCT 2009 to 19 NOV 2009