

RNAV (GPS) RWY 36

GREEN BAY/AUSTIN STRAUBEL INTL (GRB)

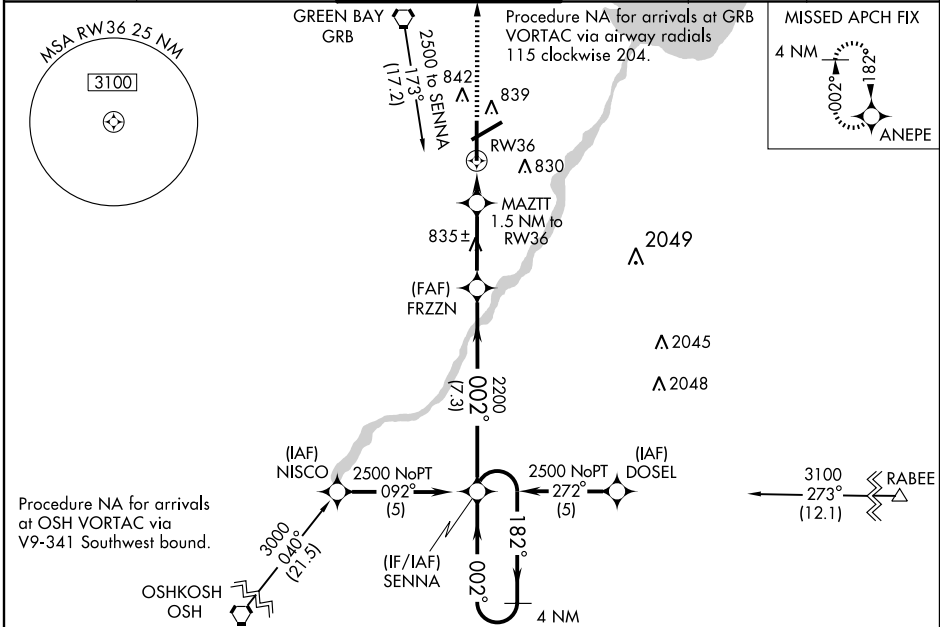
WAAS CH 42902 W36A	APP CRS 002°	Rwy Idg TDZE Apt Elev	8701 684 695
--	------------------------	-----------------------------	---

For uncompensated Baro-VNAV systems, LNAV/VNAV NA below -16°C (4°F) or above 47°C (116°F).
DME/DME RNP-0.3 NA.
Inoperative table does not apply to LNAV Cat. D.

MALSRR

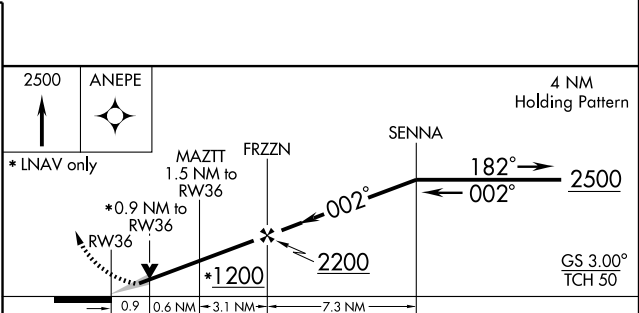
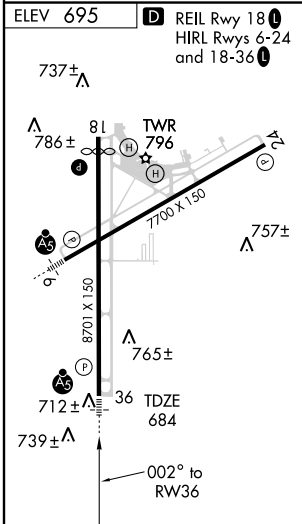
MISSED APPROACH: Climb to 2500 direct ANEPE and hold.

ATIS 124.1	GREEN BAY APP CON* 119.4 338.2	GREEN BAY TOWER* 118.7 (CTAF) 0 257.8	GND CON 121.9	CLNC DEL 121.75	UNICOM 122.95
----------------------	--	---	-------------------------	---------------------------	-------------------------



EC-3, 22 OCT 2009 to 19 NOV 2009

EC-3, 22 OCT 2009 to 19 NOV 2009



CATEGORY	A	B	C	D
LPV DA	884/24 200 (200-½)			
LNAV/VNAV DA	1097/50 413 (500-1)			
LNAV MDA	1020/24 336 (400-½)		1020/50 336 (400-1)	
CIRCLING	1200-1 505 (600-1)		1200-1½ 505 (600-1½)	1260-2 565 (600-2)