

WAAS CH <b>42802</b> <b>W18A</b>	APP CRS <b>182°</b>	Rwy Idg TDZE Apt Elev	<b>8202</b> <b>695</b> <b>695</b>
--	------------------------	-----------------------------	---

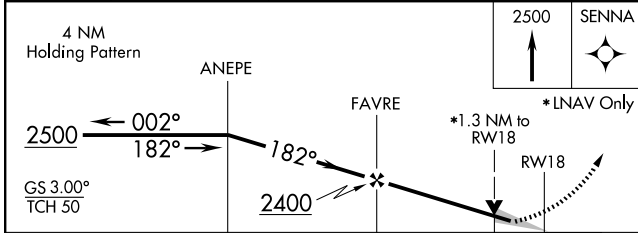
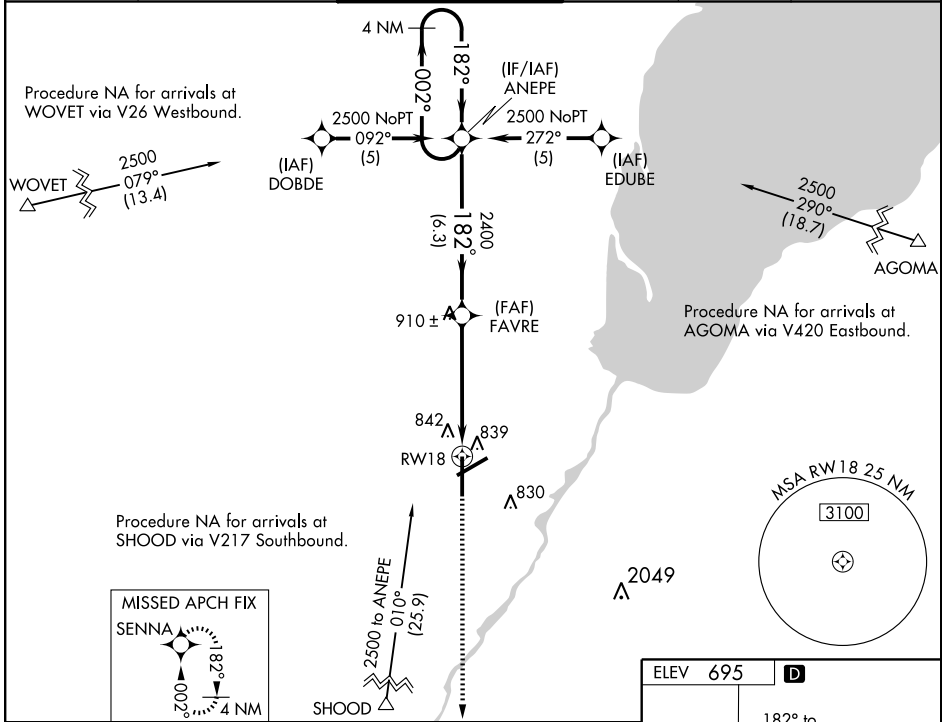
# RNAV (GPS) RWY 18

GREEN BAY/AUSTIN STRAUBEL INTL (GRB)

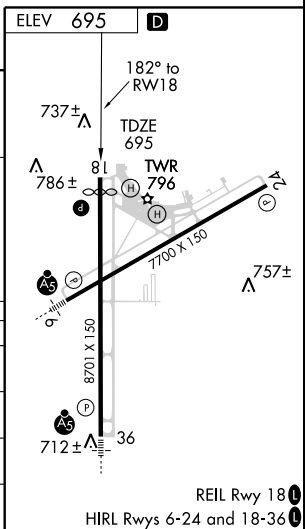
**ASR** For uncompensated Baro-VNAV systems, LNAV/VNAV NA below -16° C (4° F) or above 47° C (117° F). DME/DME RNP-0.3 NA.

**MISSED APPROACH:** Climb to 2500 direct SENNA and hold.

ATIS <b>124.1</b>	GREEN BAY APP CON * <b>119.4 338.2</b>	GREEN BAY TOWER * <b>118.7 (CTAF) 257.8</b>	GND CON <b>121.9</b>	CLNC DEL <b>121.75</b>	UNICOM <b>122.95</b>
----------------------	---	--	-------------------------	---------------------------	-------------------------



CATEGORY	A	B	C	D
LPV DA	945-3/4 250 (300-3/4)			
LNAV/VNAV DA	1187-13/4 492 (500-13/4)			
LNAV MDA	1160-1 465 (500-1)	1160-1 1/4 465 (500-1 1/4)	1160-1 1/2 465 (500-1 1/2)	1260-2 565 (600-2)
CIRCLING	1200-1 3/4 505 (600-1 3/4)			1260-2 565 (600-2)



EC-3, 22 OCT 2009 to 19 NOV 2009

EC-3, 22 OCT 2009 to 19 NOV 2009