

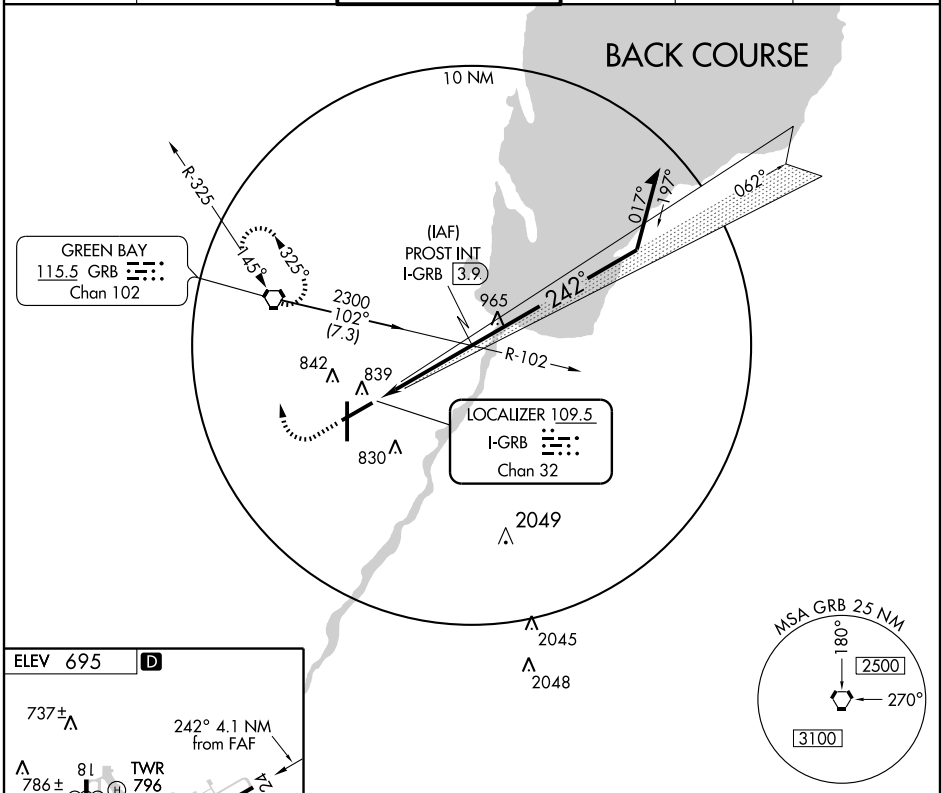
LOC/DME I-GRB 109.5 Chan 32	APP CRS 242°	Rwy Idg 7700 TDZE 682 Apt Elev 695
---	------------------------	---

LOC BC RWY 24

GREEN BAY/AUSTIN STRAUBEL INTL (GRB)

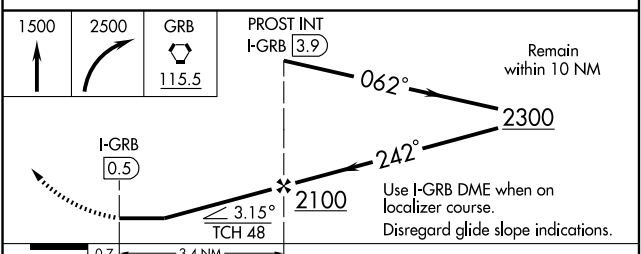
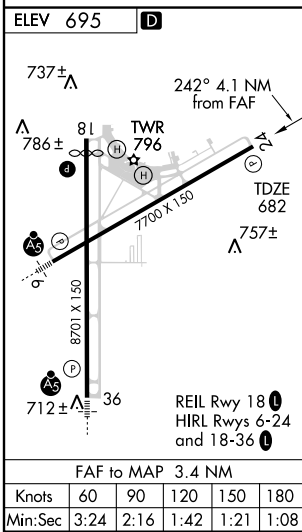
MISSED APPROACH: Climb to 1500 then climbing right turn to 2500 direct GRB VORTAC and hold.

ATIS 124.1	GREEN BAY APP CON* 119.4 338.2	GREEN BAY TOWER* 118.7(CTAF) 257.8	GND CON 121.9	CLNC DEL 121.75	UNICOM 122.95
----------------------	--	--	-------------------------	---------------------------	-------------------------



EC-3, 22 OCT 2009 to 19 NOV 2009

EC-3, 22 OCT 2009 to 19 NOV 2009



CATEGORY	A	B	C	D
S-24	1100-1 418 (500-1)		1100-1½ 418 (500-1½)	
CIRCLING	1200-1 505 (600-1)		1200-1½ 505 (600-1½)	1260-2 565 (600-2)