

# RNAV (GPS) RWY 33

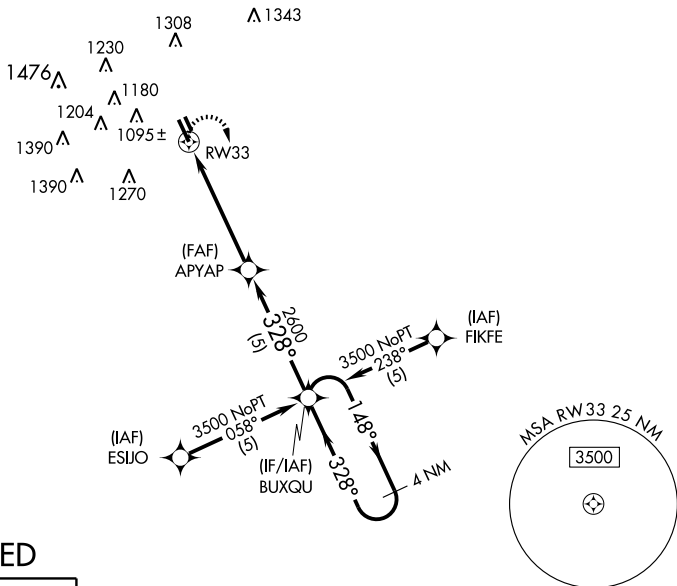
UVALDE/GARNER FIELD (UVA)

APP CRS <b>328°</b>	Rwy Idg <b>5256</b>
	TDZE <b>933</b>
	Apt Elev <b>942</b>

**▲ NA** Obtain local altimeter setting on CTAF; when not received, use Hondo Muni altimeter setting and increase all MDA's 100 feet and visibility Cat's C and D 1/4 mile.  
GPS or RNP-0.3 REQUIRED, DME/DME RNP-0.3 NA

**MISSED APPROACH:** Climbing right turn to 3500 direct BUXQU W/P and hold.

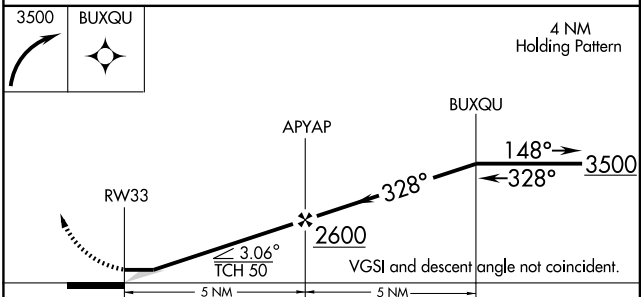
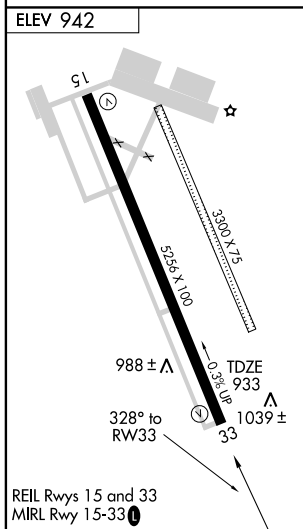
AWOS-3 <b>124.175</b>	HOUSTON CENTER <b>134.95 269.4</b>	UNICOM <b>122.8 (CTAF) 0</b>
--------------------------	---------------------------------------	---------------------------------



SC-3, 22 OCT 2009 to 19 NOV 2009

SC-3, 22 OCT 2009 to 19 NOV 2009

## RADAR REQUIRED



CATEGORY	A	B	C	D
GLS DA	NA			
LNAV/VNAV DA	NA			
LNAV MDA	1380-1 438 (500-1)	447 (500-1)	1380-1¼ 447 (500-1¼)	1380-1½ 447 (500-1½)
CIRCLING	1380-1 438 (500-1)	1460-1 518 (600-1)	1460-1½ 518 (600-1½)	1500-2 558 (600-2)