

VOR/DME FZT <b>111.4</b> Chan <b>51</b>	APP CRS <b>201°</b>	Rwy Idg <b>5005</b> TDZE <b>416</b> Apt Elev <b>423</b>
---	------------------------	---

# VOR/DME RWY 18

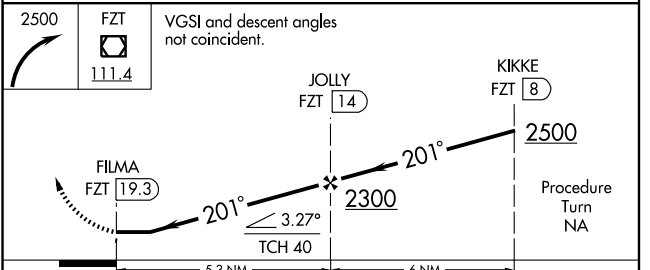
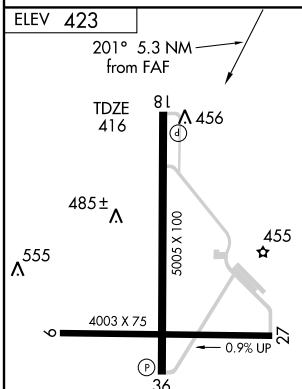
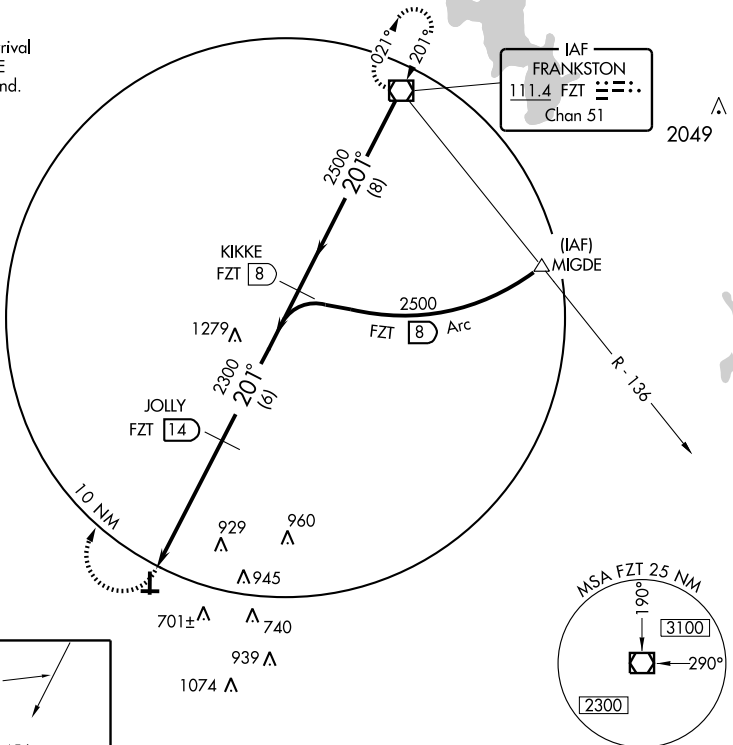
PALESTINE MUNI (PSN)

**NA** If local altimeter setting not received, use C. David Campbell Field-Corsicana Muni altimeter setting and increase all MDAs 100 feet.

MISSING APPROACH: Climbing right turn to 2500 direct FZT VOR/DME and hold.

AWOS-3 <b>118.025</b>	FORT WORTH CENTER <b>135.25 265.1</b>	UNICOM <b>122.7 (CTAF)</b>
--------------------------	--	-------------------------------

Procedure NA for arrival at FZT VOR/DME via V583 northbound.



CATEGORY	A	B	C	D
S-18	1240-1 824 (900-1)	1240-1¼ 824 (900-1½)	1240-2½ 824 (900-2½)	1240-2¾ 824 (900-2¾)
CIRCLING	1240-1 817 (900-1)	1240-1¼ 817 (900-1½)	1240-2½ 817 (900-2½)	1240-2¾ 817 (900-2¾)

REIL Rwy 36  
MIRL Rwy 18-36 and 9-27

SC-5, 22 OCT 2009 to 19 NOV 2009

SC-5, 22 OCT 2009 to 19 NOV 2009