

PALESTINE, TEXAS

AL-871 (FAA)

NDB RWY 36

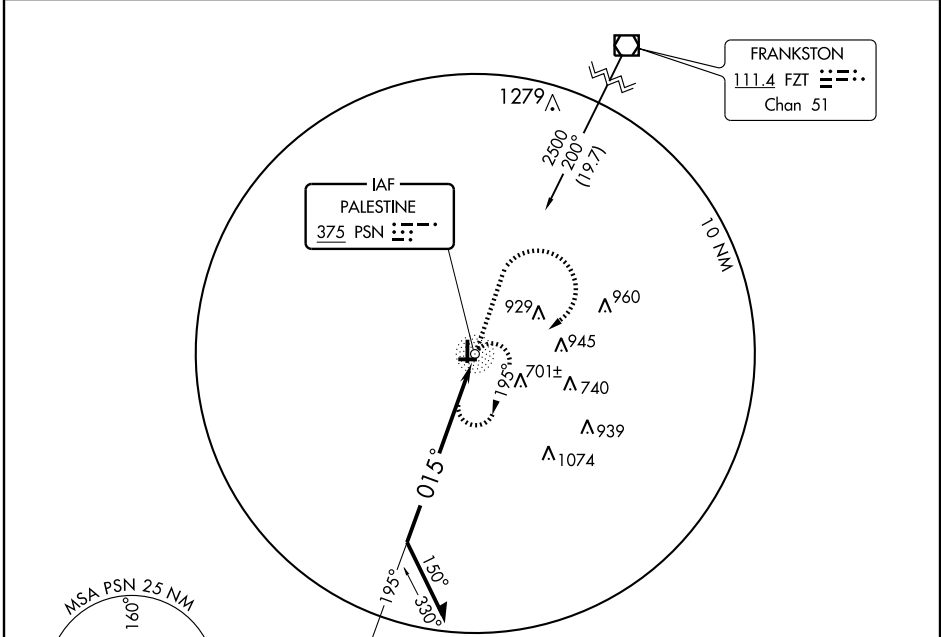
PALESTINE MUNI (PSN)

NDB PSN	APP CRS	Rwy Idg	5005
375	015°	TDZE	415
		Apt Elev	423

▽ If local altimeter setting not received, use C. David Campbell Field-Corsicana Muni altimeter setting and increase all MDAs 100 feet.

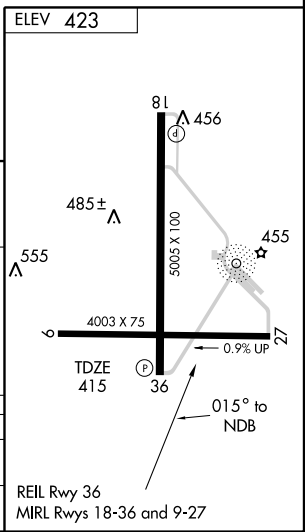
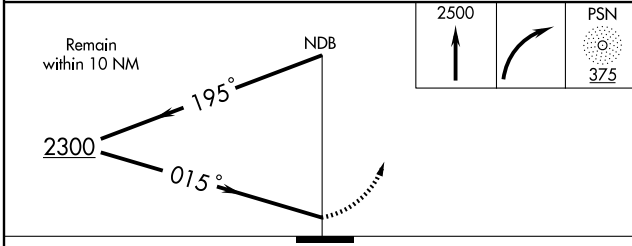
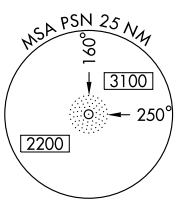
△ NA MISSED APPROACH: Climb to 2500 then right turn direct PSN NDB and hold.

AWOS-3 118.025	FORT WORTH CENTER 135.25 265.1	UNICOM 122.7 (CTAF)
--------------------------	--	-------------------------------



SC-5, 22 OCT 2009 to 19 NOV 2009

SC-5, 22 OCT 2009 to 19 NOV 2009



CATEGORY	A	B	C	D
S-36	1000-1 585 (600-1)		1000-1½ 585 (600-1½)	1000-1¾ 585 (600-1¾)
CIRCLING	1000-1 577 (600-1)	1040-1 617 (700-1)	1040-1¾ 617 (700-1¾)	1060-2 637 (700-2)

PALESTINE, TEXAS
Amdt 8 09295

31° 47' N-95° 42' W

PALESTINE MUNI (PSN)

NDB RWY 36