

LUFKIN, TEXAS

AL-870 (FAA)

VORTAC LFK 112.1	APP CRS 152°	Rwy Idg TDZE Apt Elev	4309 289 296
Chan 58			

VOR/DME RWY 15

LUFKIN/ANGELINA COUNTY (L.F.K)

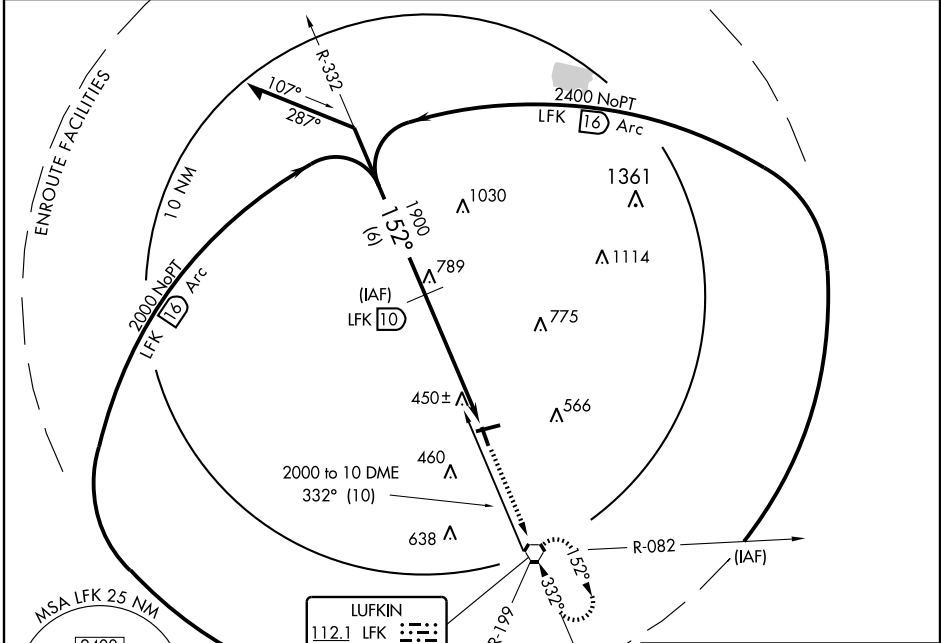
Straight-in minimums NA at night.

MISSED APPROACH: Climb to 2000 via LFK R-332 to LFK VORTAC and hold.

ASOS
120.625

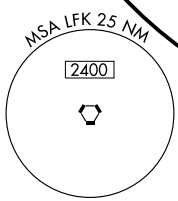
HOUSTON CENTER
125.17 285.57

UNICOM
123.0 (CTAF) 0

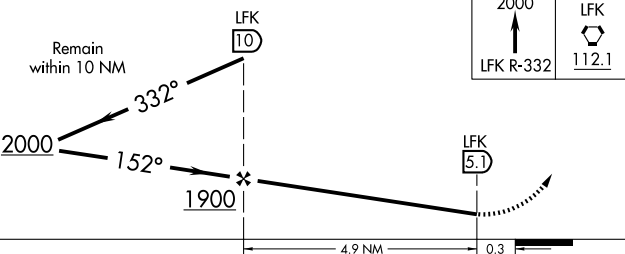
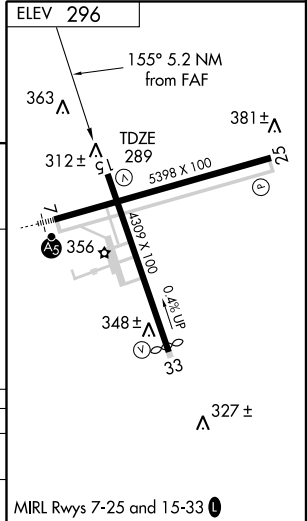


SC-5, 22 OCT 2009 to 19 NOV 2009

SC-5, 22 OCT 2009 to 19 NOV 2009



LUFKIN
112.1 LFK
Chan 58



CATEGORY	A	B	C	D
S-15	700-1	411 (500-1)	700-1½ 411 (500-1½)	NA
CIRCLING	760-1	464 (500-1)	760-1½ 464 (500-1½)	NA

MIRL Rwy 7-25 and 15-33 0

LUFKIN, TEXAS
Amdt 3 09071

31° 14' N-94° 45' W

VOR/DME RWY 15

LUFKIN/ANGELINA COUNTY (L.F.K)