

LUFKIN, TEXAS

AL-870 (FAA)

| | | |
|--|------------------------|---|
| VORTAC LFK 112.1 Chan 58 | APP CRS 332° | Rwy Idg TDZE 286 Apt Elev 296 |
|--|------------------------|---|

VOR RWY 33

LUFKIN/ANGELINA COUNTY (L.F.K)

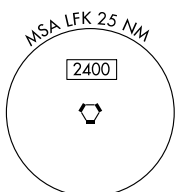
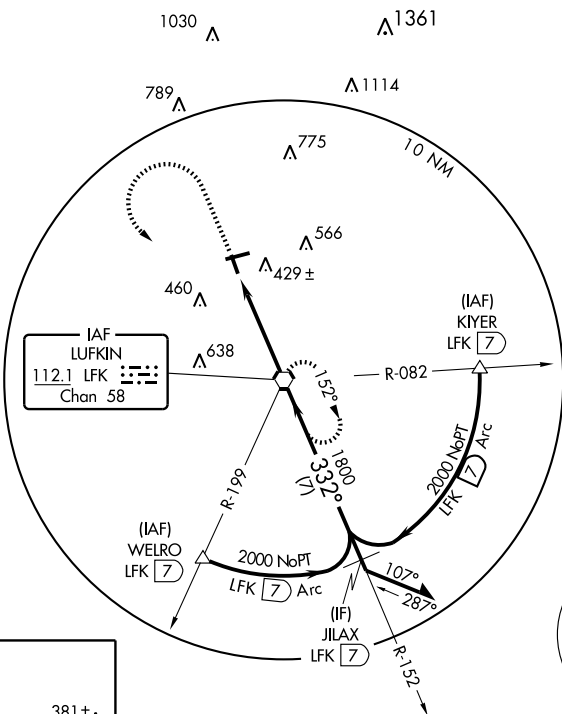
- ▼ If local altimeter setting not received, use A L Mangham Jr. Rgnl altimeter setting and increase all MDAs 60 feet.
- ▲ Visibility reduction by helicopters NA.

MISSED APPROACH: Climb to 900 then climbing left turn to 2000 direct LFK VORTAC and hold.

ASOS
120.625

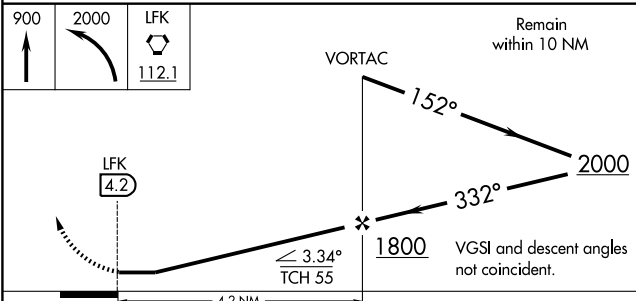
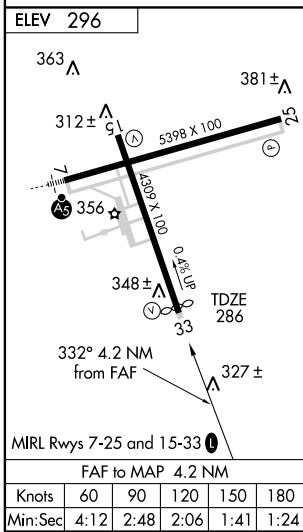
HOUSTON CENTER
125.17 285.57

UNICOM
123.0 (CTAF) **0**



SC-5, 22 OCT 2009 to 19 NOV 2009

SC-5, 22 OCT 2009 to 19 NOV 2009



| CATEGORY | A | B | C | D |
|----------|-------------------|---|------------------------|------------------------|
| S-33 | 680-1 394 (400-1) | | | 680-1¼ 394 (400-1¼) |
| CIRCLING | 760-1 464 (500-1) | | 760-1½ 464 (500-1½) | 880-2 584 (600-2) |

LUFKIN, TEXAS
Amdt 14 09071

31° 14' N-94° 45' W

VOR RWY 33