

LUFKIN, TEXAS

AL-870 (FAA)

WAAS CH 50105 W07A	APP CRS 070°	Rwy Idg TDZE Apt Elev	5398 286 296
--	------------------------	-----------------------------	---

RNAV (GPS) RWY 7

LUFKIN/ANGELINA COUNTY (L.F.K)

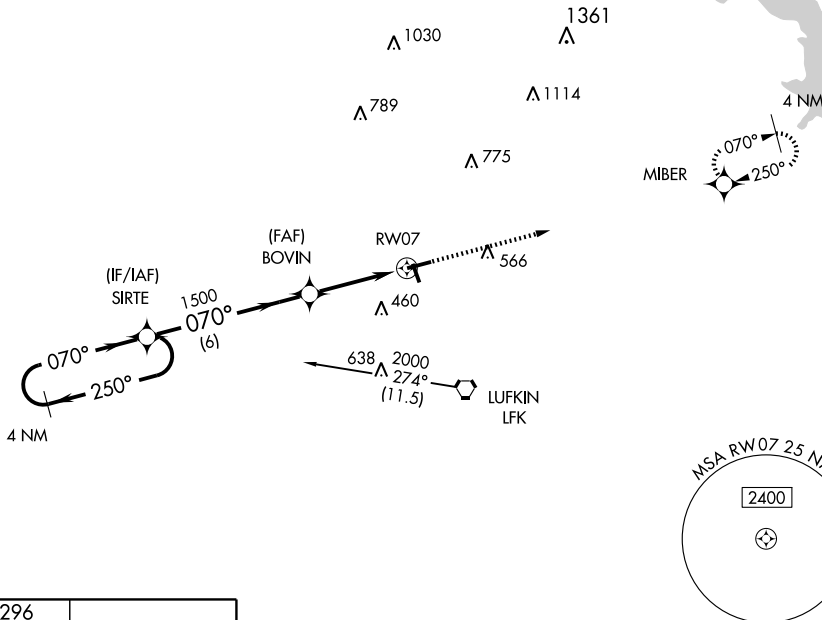
Baro-VNAV NA below -17°C (2°F). DME/DME RNP-0.3 NA. For inoperative MALSR, increase LPV all Cats visibility to ¾, and LNAV Cat D visibility to 1¼. Circling NA for Cat D to Rwy 15-33.



MISSED APPROACH: Climb to 2000 direct MIBER and hold.

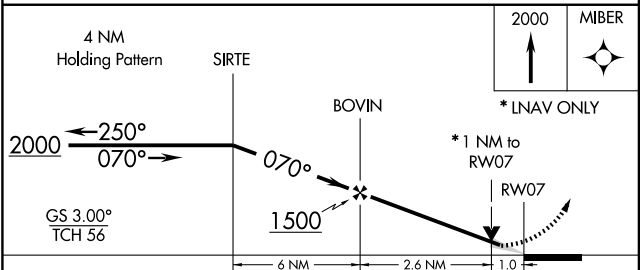
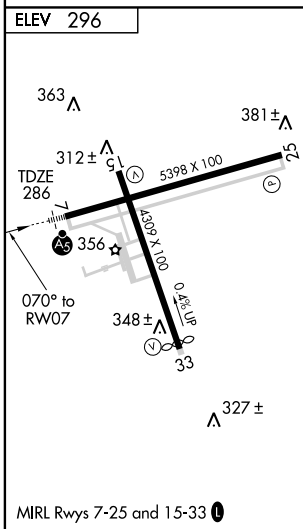
ASOS 120.625	HOUSTON CENTER 125.17 285.57	UNICOM 123.0 (CTAF) 1
------------------------	--	---------------------------------

Procedure NA for arrivals on LFK airway radials 214° CW 335°.



SC-5, 22 OCT 2009 to 19 NOV 2009

SC-5, 22 OCT 2009 to 19 NOV 2009



CATEGORY	A	B	C	D
LPV DA		540-½	254 (300-½)	
LNAV/VNAV DA		620-¾	334 (400-¾)	
LNAV MDA		660-½	374 (400-½)	660-1 374 (400-1)
CIRCLING	740-1¼ 444 (500-1¼)	760-1¼ 464 (500-1¼)	760-1½ 464 (500-1½)	880-2 584 (600-2)

LUFKIN, TEXAS
Orig 09071

31° 14' N-94° 45' W

RNAV (GPS) RWY 7