

LUFKIN, TEXAS

AL-870 (FAA)

# RNAV (GPS) RWY 33

LUFKIN/ ANGELINA COUNTY (L.F.K)

APP CRS <b>335°</b>	Rwy Idg TDZE Apt Elev	<b>4204</b> <b>286</b> <b>296</b>
------------------------	-----------------------------	---

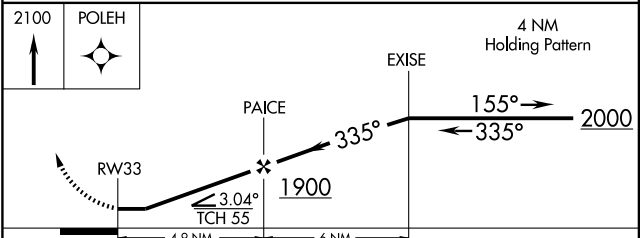
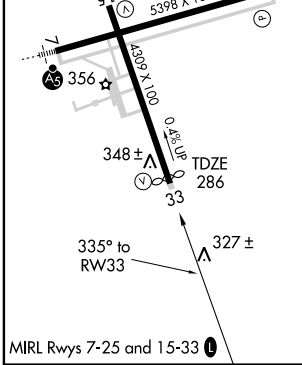
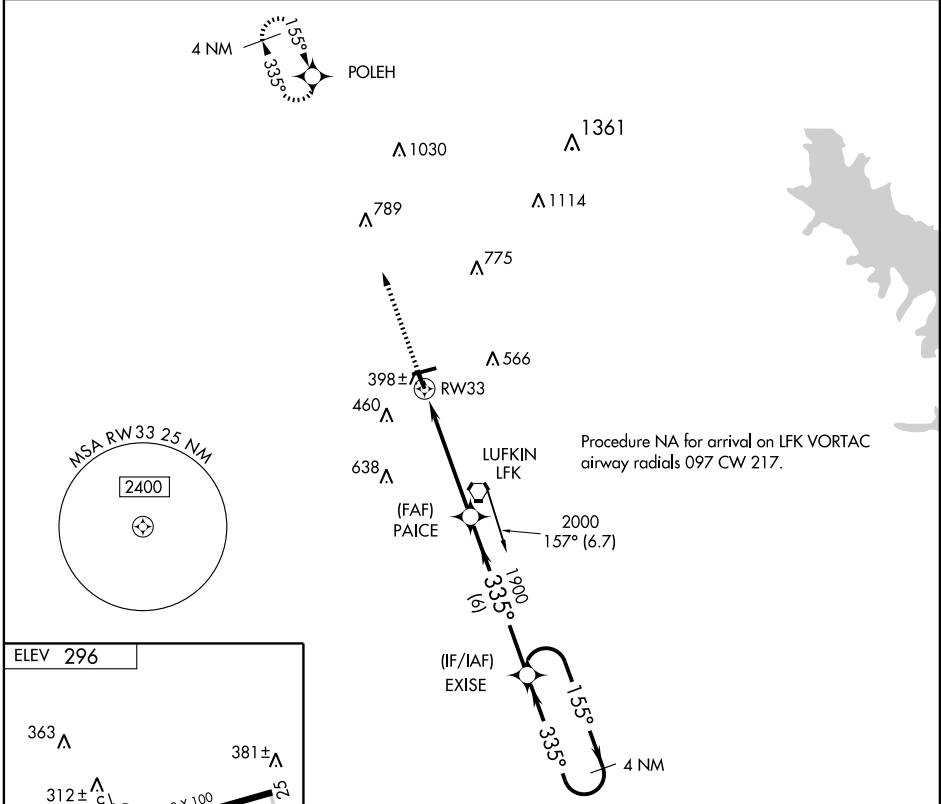
DME/DME RNP- 0.3 NA.

MISSED APPROACH: Climb to 2100 direct POLEH and hold.

ASOS  
**120.625**

HOUSTON CENTER  
**125.17 285.57**

UNICOM  
**123.0** (CTAF) **0**



CATEGORY	A	B	C	D
LNAV MDA	660-1 374 (400-1)			NA
CIRCLING	740-1 444 (500-1)	760-1 464 (500-1)	760-1½ 464 (500-1½)	NA

LUFKIN, TEXAS  
Amdt 1 09071

31° 14' N-94° 45' W

# RNAV (GPS) RWY 33

SC-5, 22 OCT 2009 to 19 NOV 2009

SC-5, 22 OCT 2009 to 19 NOV 2009