

LUFKIN, TEXAS

AL-870 (FAA)

RNAV (GPS) RWY 25

LUFKIN/ANGELINA COUNTY (L.F.K)

APP CRS 250°	Rwy Idg TDZE Apt Elev	5398 296 296
------------------------	-----------------------------	---

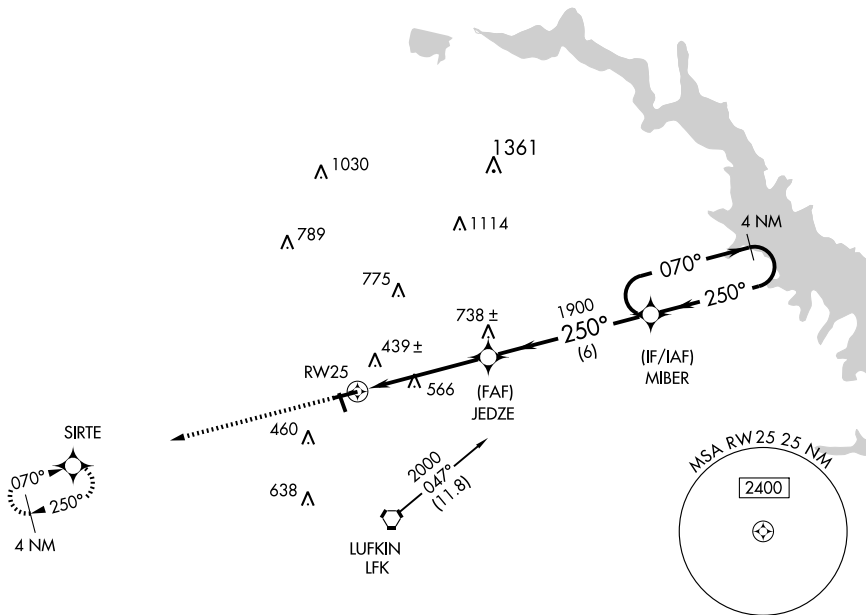
DME/DME RNP-0.3 NA.
Circling NA for Cat D to Rwy 15-33.

MISSED APPROACH: Climb to 2000 direct
SIRTE and hold.

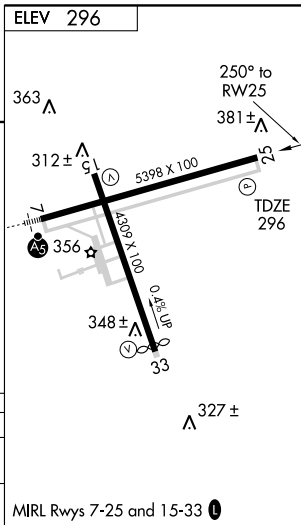
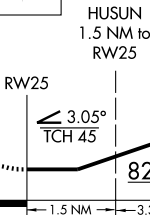
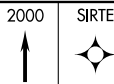
ASOS
120.625

HOUSTON CENTER
125.17 285.57

UNICOM
123.0 (CTAF) 0



Procedure NA for arrival on LFK VORTAC airway radials 346 CW 107.



CATEGORY	A	B	C	D
LNVA MDA	660-1	364 (400-1)		660-1 1/4 364 (400-1 1/4)
CIRCLING	740-1 444 (500-1)	760-1 464 (500-1)	760-1 1/2 464 (500-1 1/2)	880-2 584 (600-2)

MIRL Rwy 7-25 and 15-33 0

LUFKIN, TEXAS
Amdt 1 09071

31° 14' N-94° 45' W

RNAV (GPS) RWY 25

SC-5, 22 OCT 2009 to 19 NOV 2009

SC-5, 22 OCT 2009 to 19 NOV 2009