

LUFKIN, TEXAS

AL-870 (FAA)

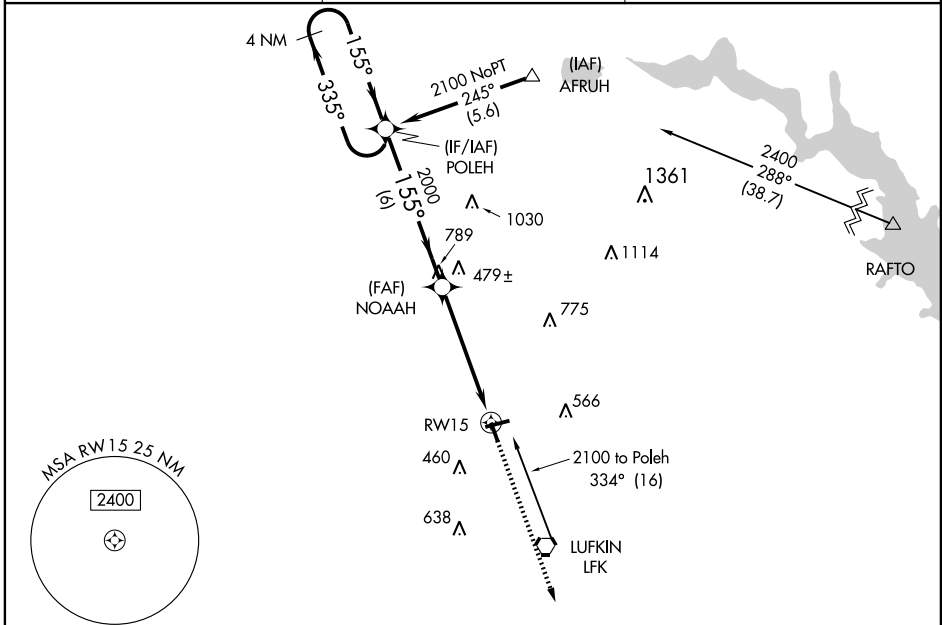
RNAV (GPS) RWY 15

LUFKIN/ANGELINA COUNTY (L.F.K)

APP CRS 155°	Rwy Idg 4309
	TDZE 289
	Apt Elev 296

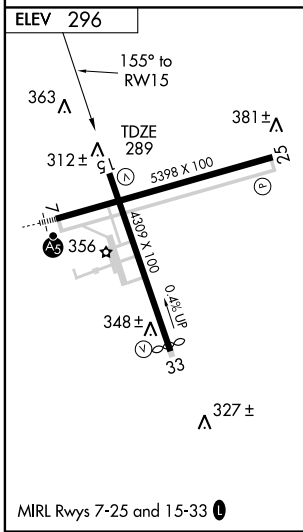
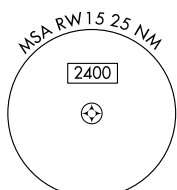
DME/DME RNP-0.3 NA.	MISSED APPROACH: Climb to 2000 direct EXISE and hold.
---------------------	---

ASOS 120.625	HOUSTON CENTER 125.17 285.57	UNICOM 123.0 (CTAF) 0
------------------------	--	---------------------------------



SC-5, 22 OCT 2009 to 19 NOV 2009

SC-5, 22 OCT 2009 to 19 NOV 2009



4 NM Holding Pattern	POLEH		2000	EXISE
	NOAAH		↑	☉
2100 ← 335°	155° →	155°	1.1 NM to RWY 15	
		2000	3.05° TCH 48	
	6 NM	4 NM	1.1	
CATEGORY	A	B	C	D
LNAV MDA	700-1	411 (500-1)	700-1¼ 411 (500-1¼)	NA
CIRCLING	740-1 444 (500-1)	760-1 464 (500-1)	760-1½ 464 (500-1½)	NA

LUFKIN, TEXAS
Orig 09071

31° 14' N-94° 45' W

RNAV (GPS) RWY 15