



RNAV (GPS) RWY 30

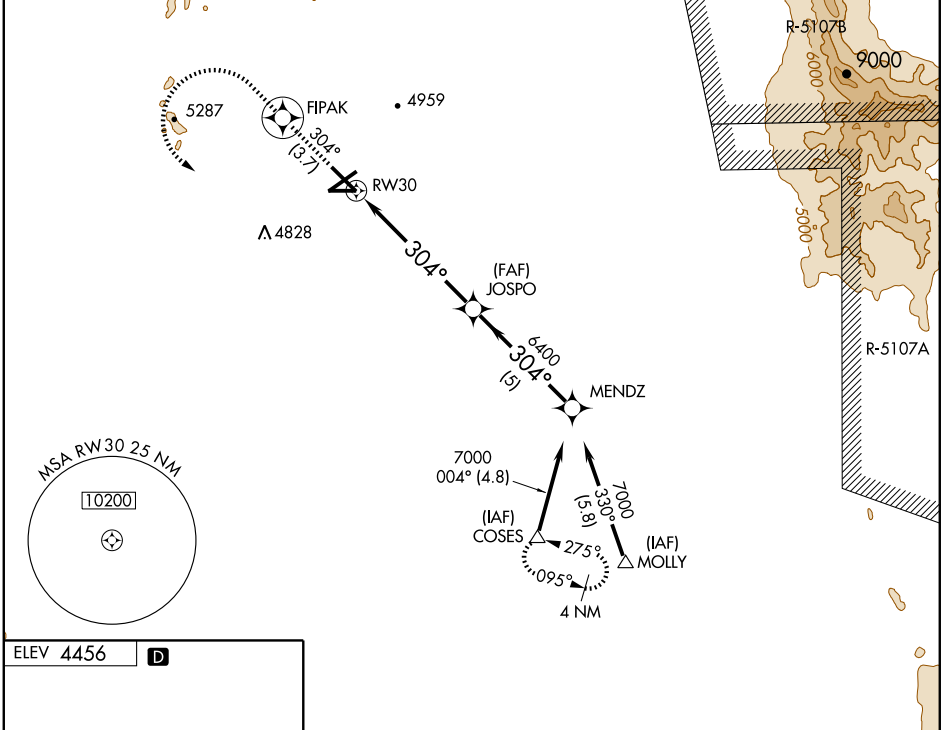
LAS CRUCES INTL (LRU)

APP CRS 304°	Rwy Idg 7499
	TDZE 4443
	Apt Elev 4456

NA Baro-VNAV NA below -1.5°C (5°F).
GPS or RNP-0.3 required. DME/DME RNP-0.3 NA.
For inoperative MALSRS increase LNAV Cat D visibility to 1¼.
If local altimeter setting not received, procedure NA.

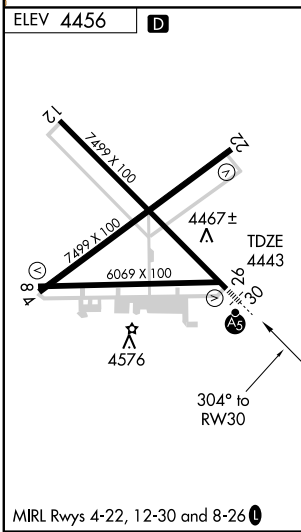
MALSRS  MISSED APPROACH: Climb to 5100 via 304° course to FIPAK WP then climbing left turn to 9000 direct COSES WP and hold.






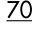
AWOS-3 119.025	ALBUQUERQUE CENTER 128.2 285.5	UNICOM 122.7 (CTAF) 
--------------------------	--	---



SW-1, 22 OCT 2009 to 19 NOV 2009

SW-1, 22 OCT 2009 to 19 NOV 2009



5100	FIPAK 	9000	COSES 	MENDZ
304°				
*LNAV only				
RW30		*1.1 NM to RW30		JOSP0
1.1 NM		4.8 NM		5 NM
MENDZ 7000				
Procedure Turn NA				
GS 3.00° TCH 47				
CATEGORY	A	B	C	D
GLS PA DA	NA			
LNAV/VNAV DA	4780-¾ 337 (400-¾)			
LNAV MDA	4840-½ 397 (400-½)			4840-1 397 (400-1)
CIRCLING	4940-1¼ 484 (500-1¼)	4940-1½ 484 (500-1½)		5020-2 564 (600-2)