

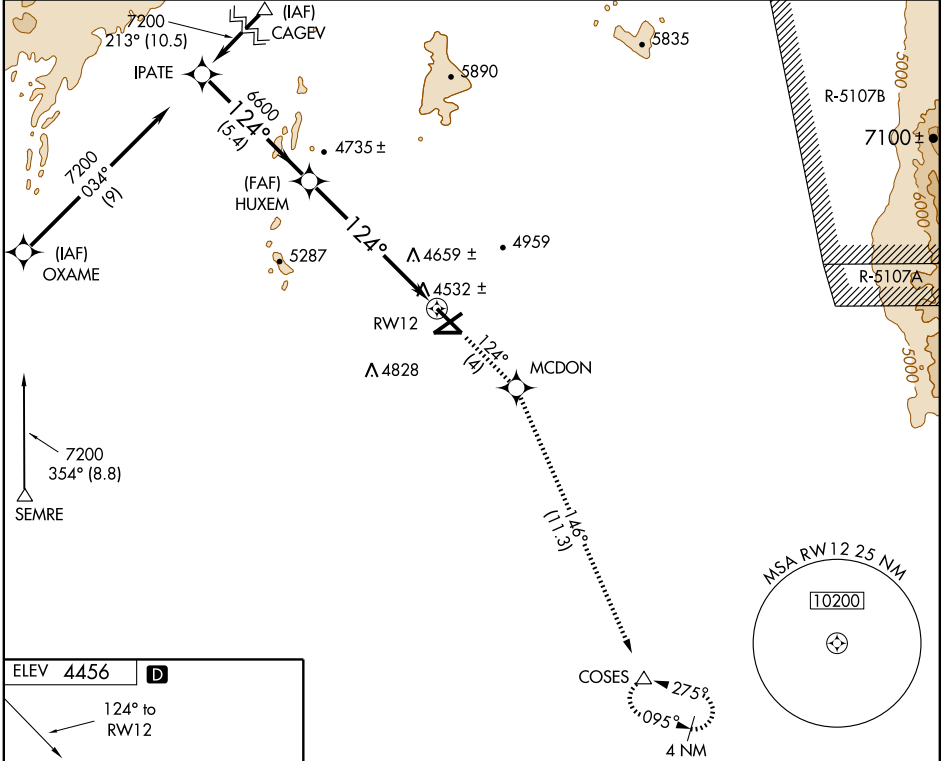
RNAV (GPS) RWY 12

LAS CRUCES INTL (LRU)

APP CRS 124°	Rwy Idg 7499
	TDZE 4456
	Apt Elev 4456

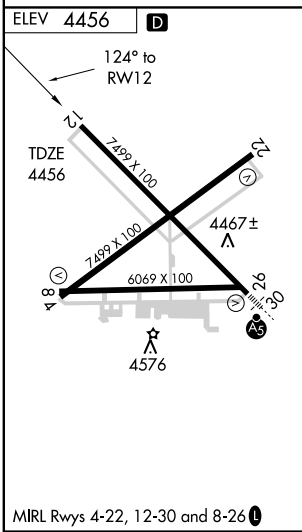
NA Baro-VNAV NA below -15°C (5°F).
 MISSED APPROACH: Climb to 9000 via 124° course to MCDON WP, and 146° track to COSES WP and hold.
 GPS or RNP-0.3 required. DME/DME RNP-0.3 NA.
 If local altimeter setting not received, procedure NA.

AWOS-3 119.025	ALBUQUERQUE CENTER 128.2 285.5	UNICOM 122.7 (CTAF)
--------------------------	--	-------------------------------



SW-1, 22 OCT 2009 to 19 NOV 2009

SW-1, 22 OCT 2009 to 19 NOV 2009



Procedure	IPATE	HUXEM	MCDON	146° track	COSES
Turn	NA				△
GS 3.00°	7200	6600			
TCH 55					
CATEGORY	A	B	C	D	
GLS PA DA	NA				
LNAV/VNAV DA	4800-1¼ 344 (400-1¼)				
LNAV MDA	4940-1	484 (500-1)	4940-1¼	4940-1½	484 (500-1½)
CIRCLING	4940-1¼	484 (500-1¼)	4940-1½	5020-2	564 (600-2)