

KEENE, NEW HAMPSHIRE

AL-868 (FAA)

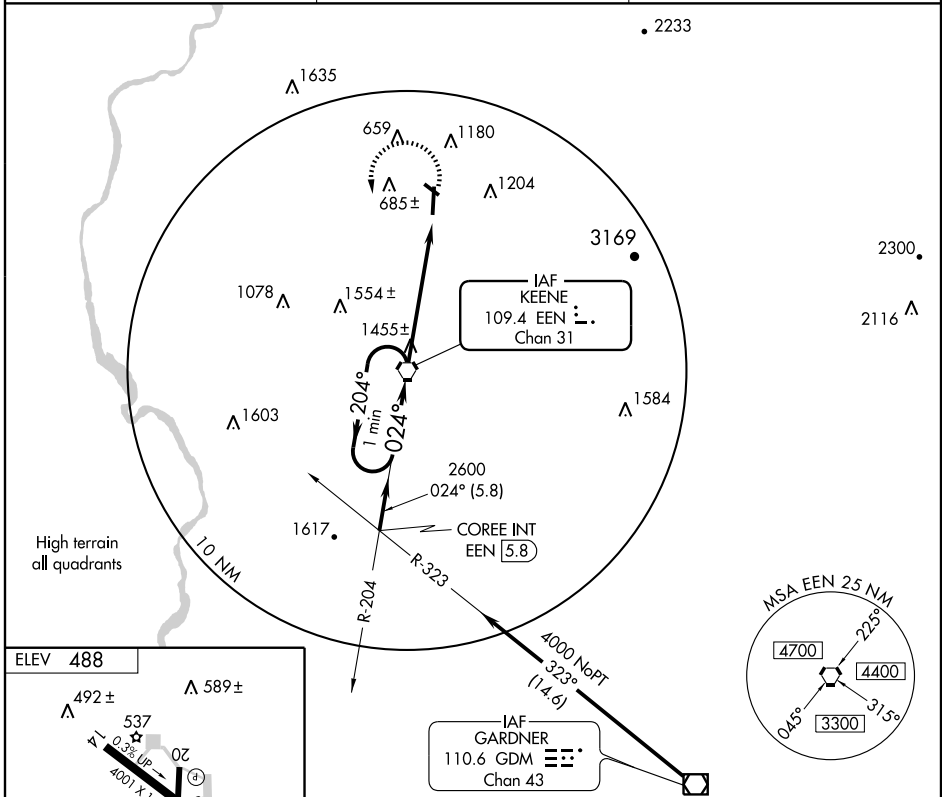
VORTAC EEN <b>109.4</b> Chan 31	APP CRS <b>024°</b>	Rwy Idg TDZE Apt Elev	<b>6201</b> <b>488</b> <b>488</b>
---------------------------------------	------------------------	-----------------------------	---

# VOR RWY 2

KEENE/DILLANT-HOPKINS (EEN)

**▼** Inoperative table does not apply. **▲** MALSR **AS** MISSED APPROACH: Climbing left turn to 2900 direct EEN VORTAC and hold.

AWOS-3 <b>119.025</b>	BOSTON CENTER <b>123.75 338.2</b>	UNICOM <b>123.0 (CTAF)</b>
--------------------------	--------------------------------------	-------------------------------



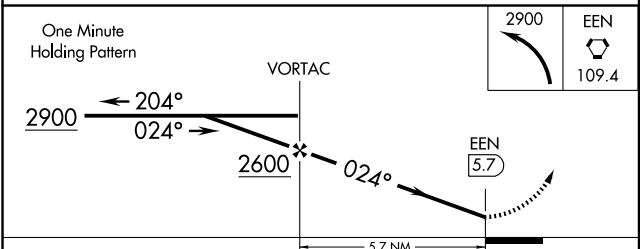
NE-1, 22 OCT 2009 to 19 NOV 2009

NE-1, 22 OCT 2009 to 19 NOV 2009

ELEV 488

FAF to MAP 5.7 NM

Knots	60	90	120	150	180
Min:Sec	5:42	3:48	2:51	2:17	1:54



CATEGORY	A	B	C	D
S-2	2100-1¼ 1612 (1700-1¼)	2100-1½ 1612 (1700-1½)	2100-3	1612 (1700-3)
CIRCLING	2100-1¼ 1612 (1700-1¼)	2100-1½ 1612 (1700-1½)	2100-3	1612 (1700-3)

KEENE, NEW HAMPSHIRE  
Amdt 12D 09295

42°54'N - 72°16'W

# KEENE/DILLANT-HOPKINS (EEN) VOR RWY 2