

RNAV (GPS) RWY 2

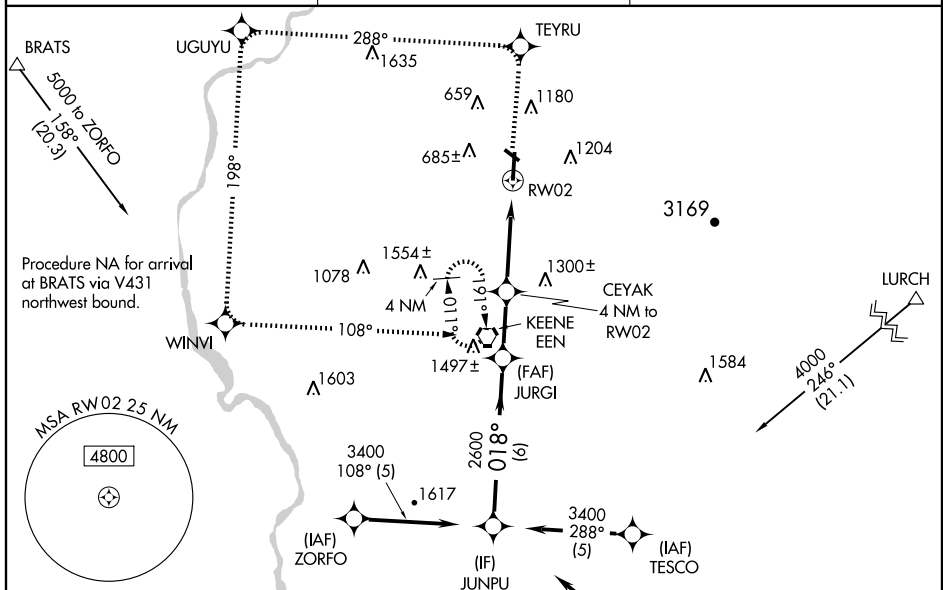
KEENE/DILLANT-HOPKINS (EEN)

WAAS CH 65708 W02A	APP CRS 018°	Rwy Idg TDZE 488 Apt Elev 488	6201
--	------------------------	---	-------------

∇ DME/DME RNP-0.3 NA. Visibility reduction by helicopters NA.
⚠ When local altimeter setting not received use Orange, MA altimeter setting and increase all DA 55 feet and all MDA 60 feet and LNAV Cat. C visibility ½ mile. For inoperative MALSRS, increase LPV visibility all Cats. to ½ mile and LNAV Cats. A and B visibilities to ¼ mile. For inoperative MALSRS, when using Orange, MA altimeter setting, increase LPV visibility all Cats. to ½ mile and LNAV Cat. A visibility to ¼ mile.

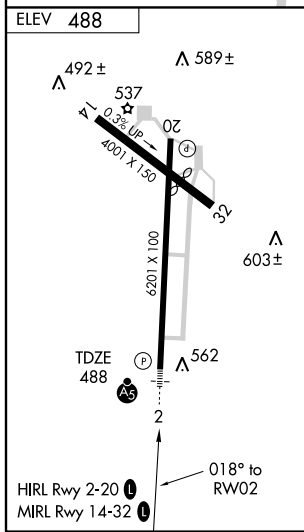
MALSRS MISSED APPROACH: Climb to 3000 direct TEYRU and via 288° track to UGUYU and via 198° track to WINVI and via 108° track to EEN VORTAC and hold.

AWOS-3 119.025	BOSTON CENTER 123.75 338.2	UNICOM 123.0 (CTAF) 0
--------------------------	--------------------------------------	---------------------------------



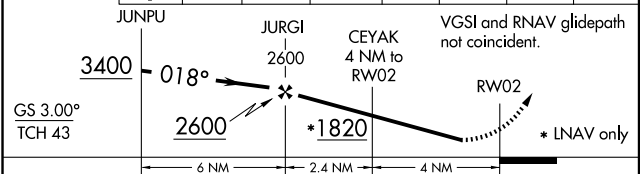
NE-1, 22 OCT 2009 to 19 NOV 2009

NE-1, 22 OCT 2009 to 19 NOV 2009



Procedure NA for arrival on GDM VOR/DME airway radials 263 CW 339.

Procedure Turn NA	3000	TEYRU	288° track	UGUYU	WINVI	EEN
-------------------	------	-------	------------	-------	-------	-----



CATEGORY	A	B	C	D
LPV DA	884-1 396 (400-1)			
LNAV MDA	1380-1	892 (900-1)	1380-2½ 892 (900-2¼)	1380-2½ 892 (900-2½)
CIRCLING	1380-1¼ 892 (900-1¼)	1480-1½ 992 (1000-1½)	1480-3 992 (1000-3)	1640-3 1152 (1200-3)