

VOR RWY 17

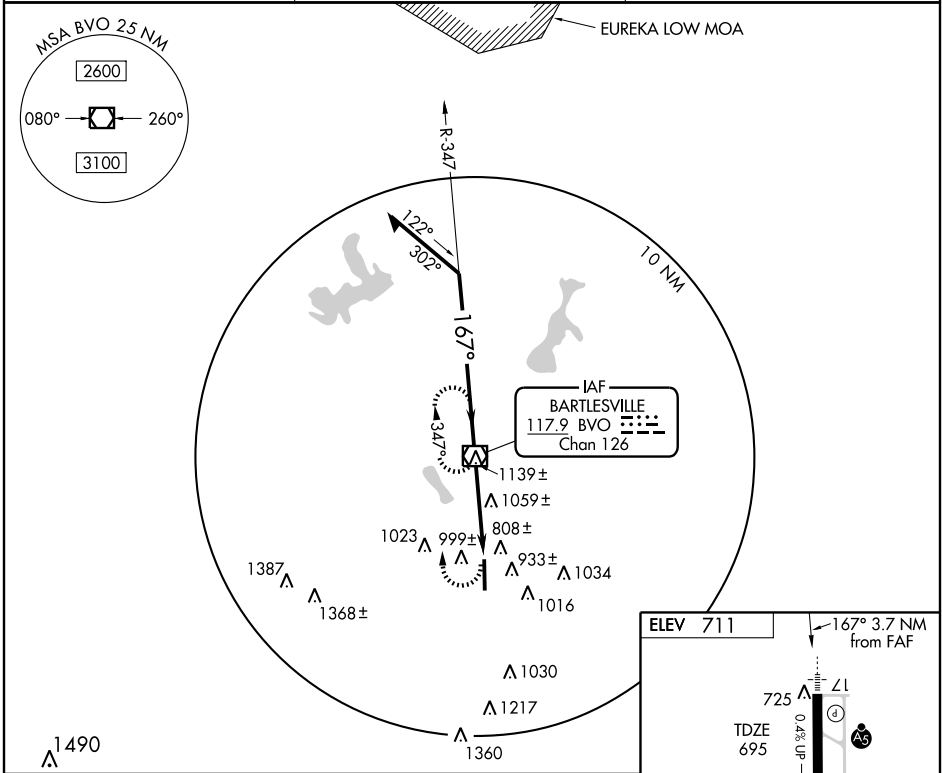
BARTLESVILLE MUNI (BVO)

VOR/DME BVO 117.9 Chan 126	APP CRS 167°	Rwy Idg 6200 TDZE 695 Apt Elev 711
--	------------------------	---

▼ For inoperative MALSR, increase S-17 Cats A and B visibility to 1 mile.
▲ Circling NA east of Rwy 17-35. Visibility reduction by helicopters NA.
 When local altimeter setting not received, use Tulsa Intl altimeter setting and increase all MDAs 100 feet and S-17 Cat C/D visibility ¼ mile, Circling Cat B/C/D visibility ¼ mile. VDP NA when using Tulsa Intl altimeter setting.

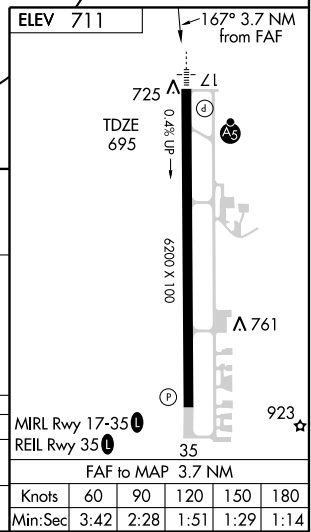
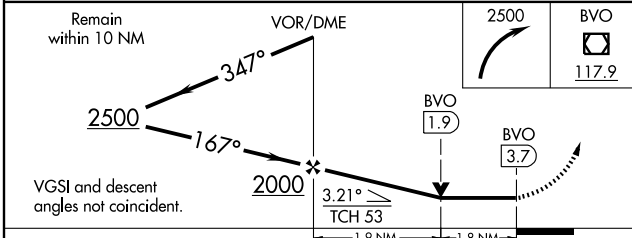
MALSR
 MISSED APPROACH: Climbing right turn to 2500 direct BVO VOR/DME and hold, continue climb-in-hold to 2500.

AWOS 132.675	KANSAS CITY CENTER 128.8 354.1	UNICOM 123.0 (CTAF) ①
------------------------	--	---------------------------------



SC-1, 22 OCT 2009 to 19 NOV 2009

SC-1, 22 OCT 2009 to 19 NOV 2009



CATEGORY	A	B	C	D
S-17	1320-¾ 625 (700-¾)		1320-1¼ 625 (700-1¼)	1320-1½ 625 (700-1½)
CIRCLING	1400-1 689 (700-1)		1400-2 689 (700-2)	1400-2¼ 689 (700-2¼)