

# RNAV (GPS) RWY 17

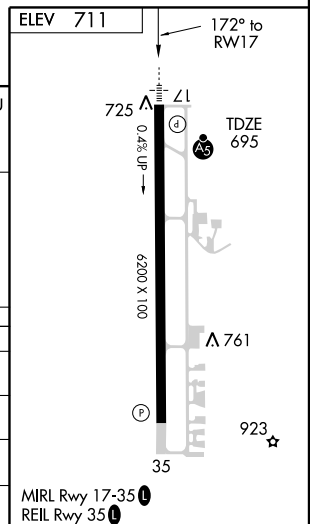
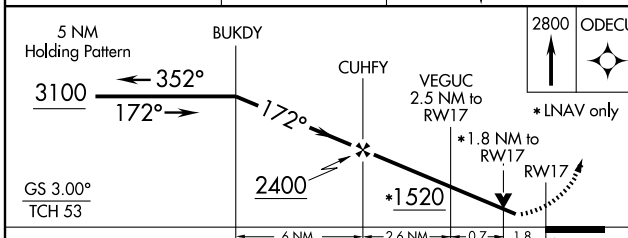
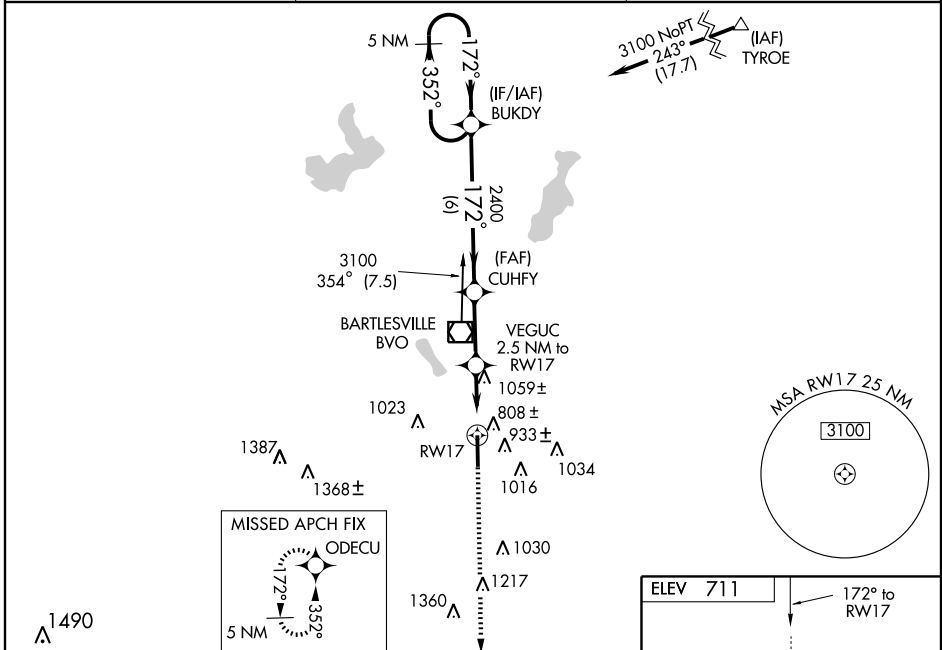
BARTLESVILLE MUNI (BVO)

WAAS Chan <b>58201</b> <b>W17A</b>	APP CRS <b>172°</b>	Rwy Idg TDZE Apt Elev	<b>6200</b> <b>695</b> <b>711</b>
--	------------------------	-----------------------------	---

**⚠** For inoperative MALSR, increase LNAV MDA Cats A and B visibility to 1 mile. Circling NA east of Rwy 17-35. Baro-VNAV NA when using Tulsa Intl altimeter setting. For uncompensated Baro-VNAV systems, LNAV/VNAV NA below -16°C (4°F) or above 47°C (116°F). DME/DME RNP-0.3 NA. Visibility reduction by helicopters NA. VDP NA when using Tulsa Intl altimeter setting. When local altimeter setting not received, use Tulsa Intl altimeter setting and increase all DAs 84 feet and all visibilities ¼ mile; increase all MDAs 100 feet and LNAV Cat C/D visibility ¼ mile, Circling Cat B/C/D visibility ¼ mile.

**MALSR**  
 MISSED APPROACH: Climb to 2800 direct ODECU and hold.

AWOS <b>132.675</b>	KANSAS CITY CENTER <b>128.8 354.1</b>	UNICOM <b>123.0 (CTAF) 0</b>
------------------------	--	---------------------------------



CATEGORY	A	B	C	D
LPV DA	1192-1¼		497 (500-1¼)	
LNAV/VNAV DA	1451-2¼		756 (800-2¼)	
LNAV MDA	1320-¾	625 (700-¾)	1320-1¼ 625 (700-1¼)	1320-1½ 625 (700-1½)
CIRCLING	1400-1 689 (700-1)		1400-2 689 (700-2)	1400-2¼ 689 (700-2¼)

SC-1, 22 OCT 2009 to 19 NOV 2009

SC-1, 22 OCT 2009 to 19 NOV 2009