


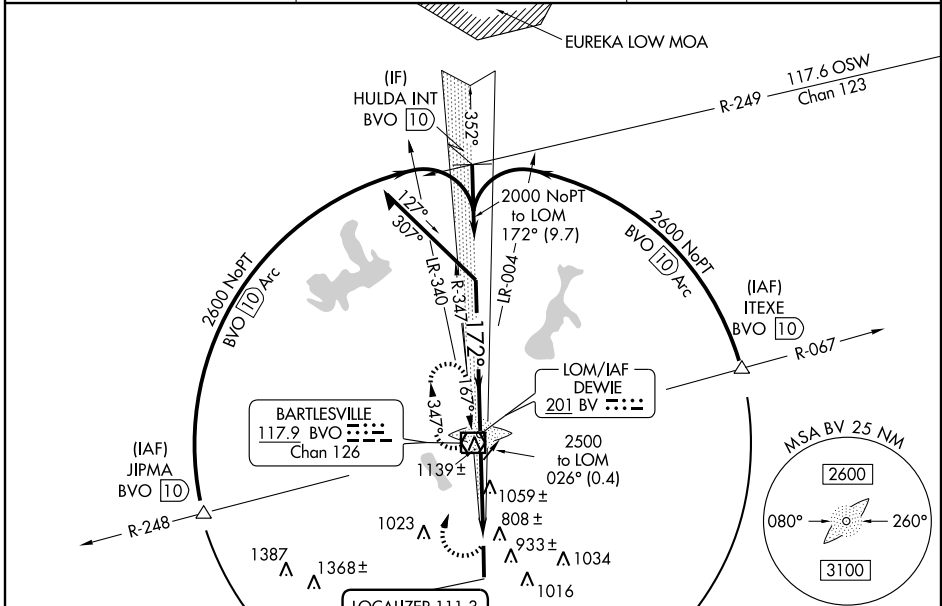
# LOC RWY 17

BARTLESVILLE MUNI (BVO)

LOC I-BVO <b>111.3</b>	APP CRS <b>172°</b>	Rwy Idg <b>6200</b>
		TDZE <b>695</b>
		Apt Elev <b>711</b>

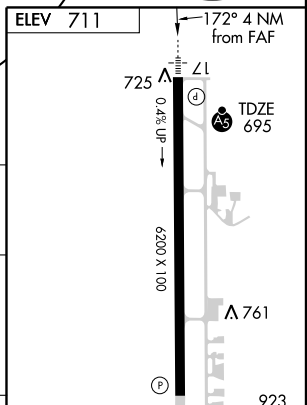
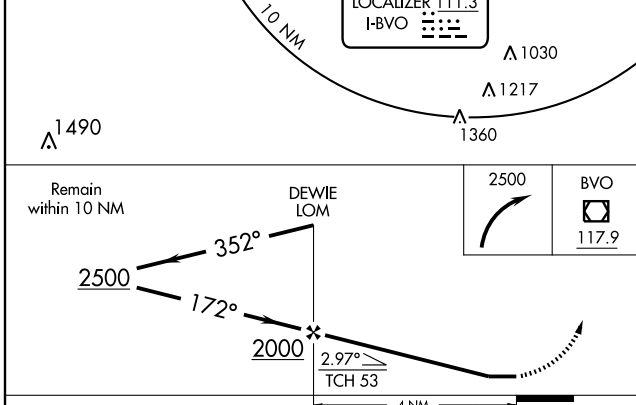
<p><b>NA</b> For inoperative MALS, increase S-17 Cats A and B visibility to 1 mile. Circling NA east of Rwy 17-35. Visibility reduction by helicopters NA. When local altimeter setting not received, use Tulsa Intl altimeter setting and increase all MDAs 100 feet and S-17 Cat C/D visibilities 1/4 mile, circling Cat B/C/D visibilities 1/2 mile.</p>	<p><b>MALS</b></p>  <p><b>MISSED APPROACH:</b> Climbing right turn to 2500 direct BVO VOR/DME and hold, continue climb-in-hold to 2500.</p>
---	--

AWOS <b>132.675</b>	KANSAS CITY CENTER <b>128.8 354.1</b>	UNICOM <b>123.0 (CTAF)</b>
------------------------	--	-------------------------------



SC-1, 22 OCT 2009 to 19 NOV 2009

SC-1, 22 OCT 2009 to 19 NOV 2009



CATEGORY	A	B	C	D
S-17	1320-3/4 625 (700-3/4)		1320-1 1/4 625 (700-1 1/4)	1320-1 1/2 625 (700-1 1/2)
CIRCLING	1400-1 689 (700-1)		1400-2 689 (700-2)	1400-2 1/4 689 (700-2 1/4)

MIRL Rwy 17-35 **1**  
REIL Rwy 35 **1**

FAF to MAP 4 NM

Knots	60	90	120	150	180
Min:Sec	4:00	2:40	2:00	1:36	1:20