

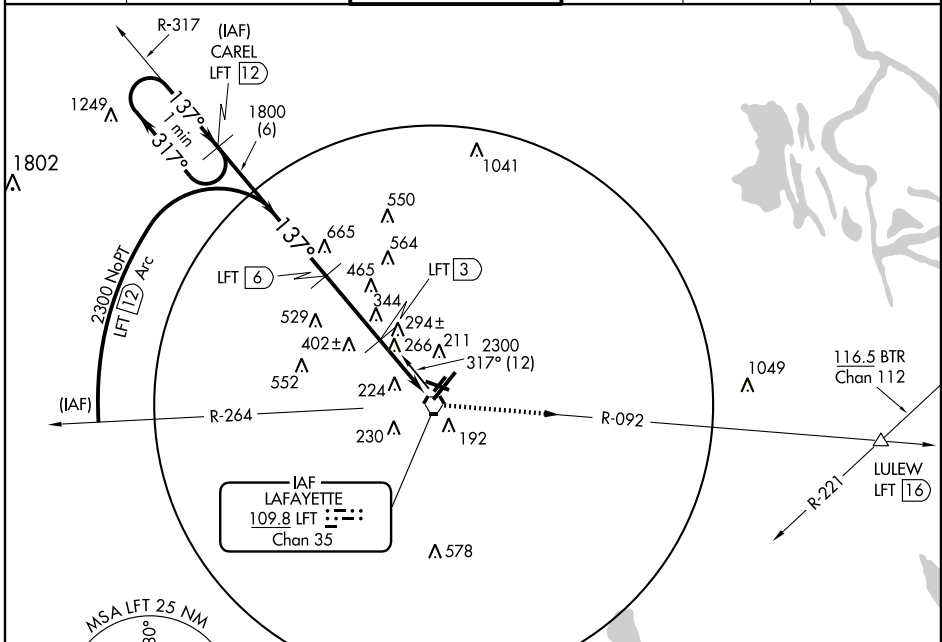
# VOR/DME RWY 11

LAFAYETTE RGNL (LFT)

VORTAC LFT <b>109.8</b> Chan <b>35</b>	APP CRS <b>137°</b>	Rwy Idg TDZE Apt Elev	<b>5400</b> <b>41</b> <b>42</b>
--	------------------------	-----------------------------	---------------------------------------

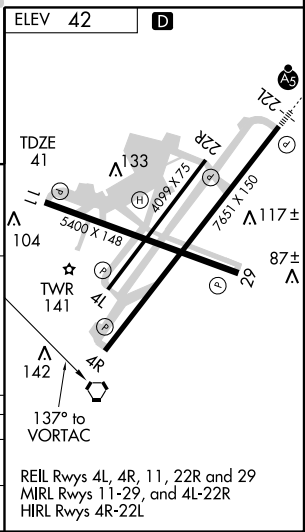
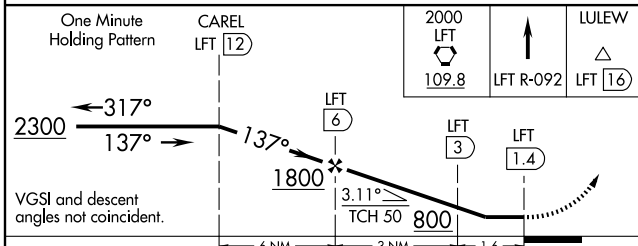
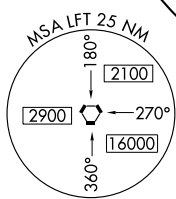
ASR MISSED APPROACH: Climb to 2000 via LFT VORTAC and LFT R-092 to LULEW Int/LFT 16 DME.

ATIS <b>134.05</b>	LAFAYETTE APP CON* <b>121.1 363.0</b>	LAFAYETTE TOWER* <b>118.5 (CTAF) 0 257.8</b>	GND CON <b>121.8</b>	CLNC DEL <b>125.55</b>	UNICOM <b>122.95</b>
-----------------------	--	---	-------------------------	---------------------------	-------------------------



SC-4, 22 OCT 2009 to 19 NOV 2009

SC-4, 22 OCT 2009 to 19 NOV 2009



CATEGORY	A	B	C	D
S-11	660-1 619 (700-1)		660-1 619 (700-1 3/4)	660-2 619 (700-2)
CIRCLING	660-1 618 (700-1)		660-1 618 (700-1 3/4)	660-2 618 (700-2)

REIL Rwy 4L, 4R, 11, 22R and 29  
MIRL Rwy 11-29, and 4L-22R  
HIRL Rwy 4R-22L