

RNAV (GPS) RWY 29

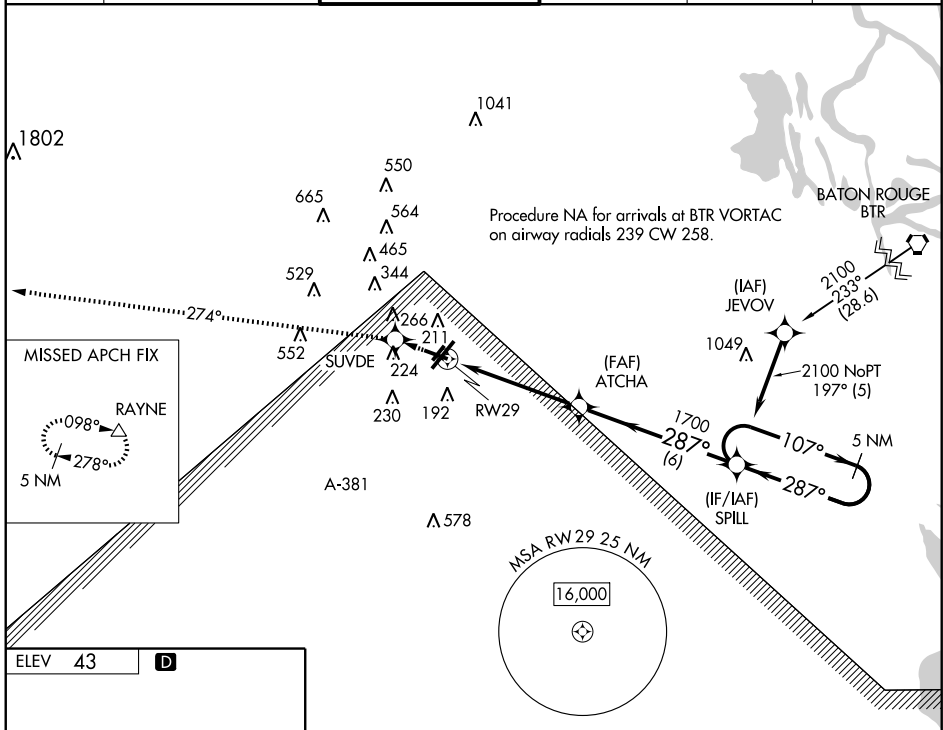
LAFAYETTE RGNL (LFT)

WAAS CH 45703 W29A	APP CRS 287°	Rwy ldg 5400 TDZE 42 Apt Elev 43
--	------------------------	---

▼ Baro-VNAV NA when using Acadiana Rgnl altimeter setting. For uncompensated Baro-VNAV systems, LNAV/VNAV NA below -1.5°C (5°F) or above 48°C (118°F).
▲ DME/DME RNP-0.3 NA. Visibility reduction by helicopters NA. If local altimeter setting not received, use Acadiana Rgnl altimeter setting and increase all DAs 29 feet/MDAs 40 feet.

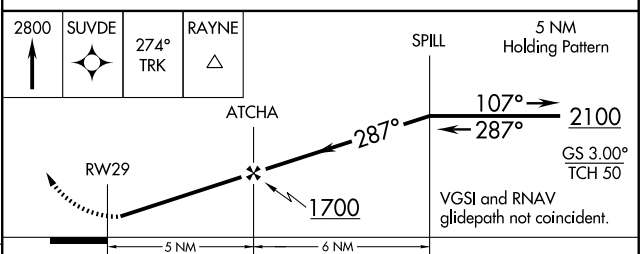
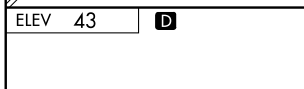
MISSED APPROACH:
Climb to 2800 direct SUVDE and via 274° track to RAYNE and hold.

ATIS 134.05	LAFAYETTE APP CON * 121.1 363.0	LAFAYETTE TOWER * 118.5 (CTAF) 0 257.8	GND CON 121.8	CLNC DEL 125.55	UNICOM 122.95
-----------------------	---	--	-------------------------	---------------------------	-------------------------



SC-4, 22 OCT 2009 to 19 NOV 2009

SC-4, 22 OCT 2009 to 19 NOV 2009



CATEGORY	A	B	C	D
LPV DA	294-1		252 (300-1)	
LNAV/VNAV DA	462-1½		420 (500-1½)	
LNAV MDA	400-1		358 (400-1)	
CIRCLING	540-1	580-1	580-1½	400-1¼
	497 (500-1)	537 (600-1)	537 (600-1½)	358 (400-1¼)
				660-2
				617 (700-2)

REIL Rwy 4L, 4R, 11, 22R and 29
 MIRL Rwy 11-29 and 4L-22R
 HIRL Rwy 4R-22L