

LAFAYETTE, LOUISIANA

AL-865 (FAA)

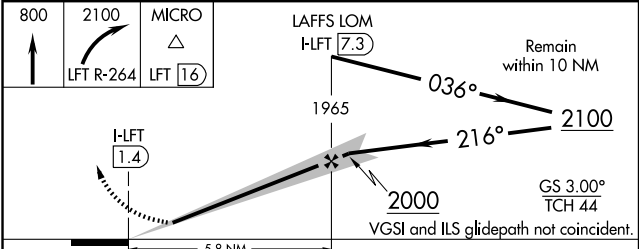
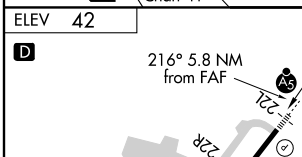
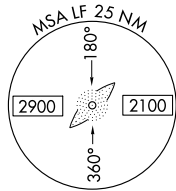
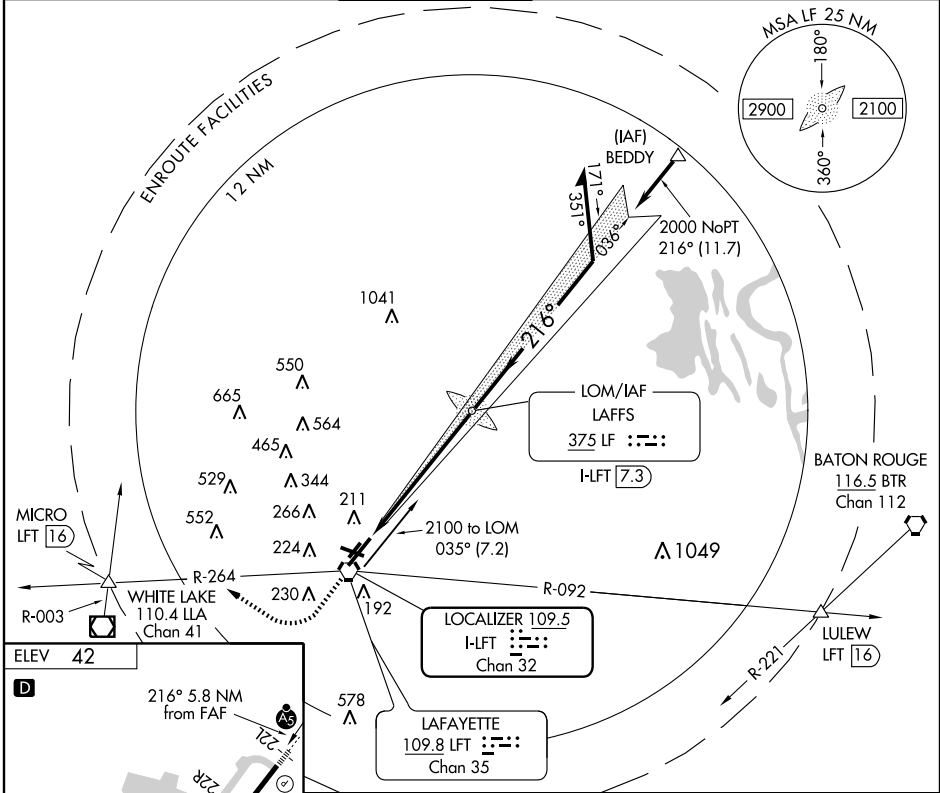
# ILS or LOC RWY 22L

LAFAYETTE RGNL (LFT)

LOC I-LFT <b>109.5</b> Chan <b>32</b>	APP CRS <b>216°</b>	Rwy Idg TDZE <b>38</b> Apt Elev <b>42</b>	<b>7651</b>
---	------------------------	---	-------------

<p>* RVR 1800 authorized with the use of FD or AP or HUD to DA.</p> <p>ASR</p>	<p>MALS R</p>	<p>MISSED APPROACH: Climb to 800 then climbing right turn to 2100 via LFT R-264 to MICRO Int.</p>
--	---------------	---

ATIS <b>134.05</b>	LAFAYETTE APP CON * <b>121.1 363.0</b>	LAFAYETTE TOWER * <b>118.5 (CTAF) 257.8</b>	GND CON <b>121.8</b>	CLNC DEL <b>125.55</b>	UNICOM <b>122.95</b>
-----------------------	---	--	-------------------------	---------------------------	-------------------------



REIL Rwy 4L, 4R, 11, 22R and 29  
MIRL Rwy 11-29 and 4L-22R  
HIRL Rwy 4R-22L

FAF to MAP 5.8 NM

Knots	60	90	120	150	180
Min:Sec	5:48	3:52	2:54	2:19	1:56

CATEGORY	A	B	C	D
S-ILS 22L		* 238/24	200 (200-½)	
S-LOC 22L	460/24	422 (500-½)	460/40	422 (500-¾)
CIRCLING	540-1 498 (500-1)	580-1 538 (600-1)	580-1½ 538 (600-1½)	660-2 618 (700-2)

LAFAYETTE, LOUISIANA  
Amdt 4G 09015

30°12'N - 91°59'W

# LAFAYETTE RGNL (LFT)

## ILS or LOC RWY 22L

SC-4, 22 OCT 2009 to 19 NOV 2009

SC-4, 22 OCT 2009 to 19 NOV 2009