

ZANESVILLE, OHIO

AL-864 (FAA)

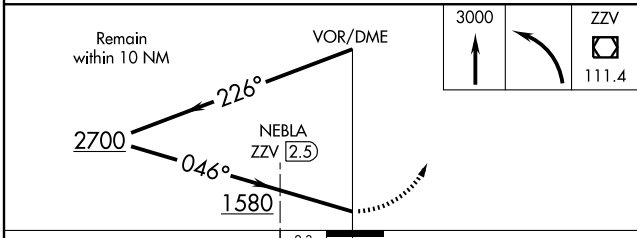
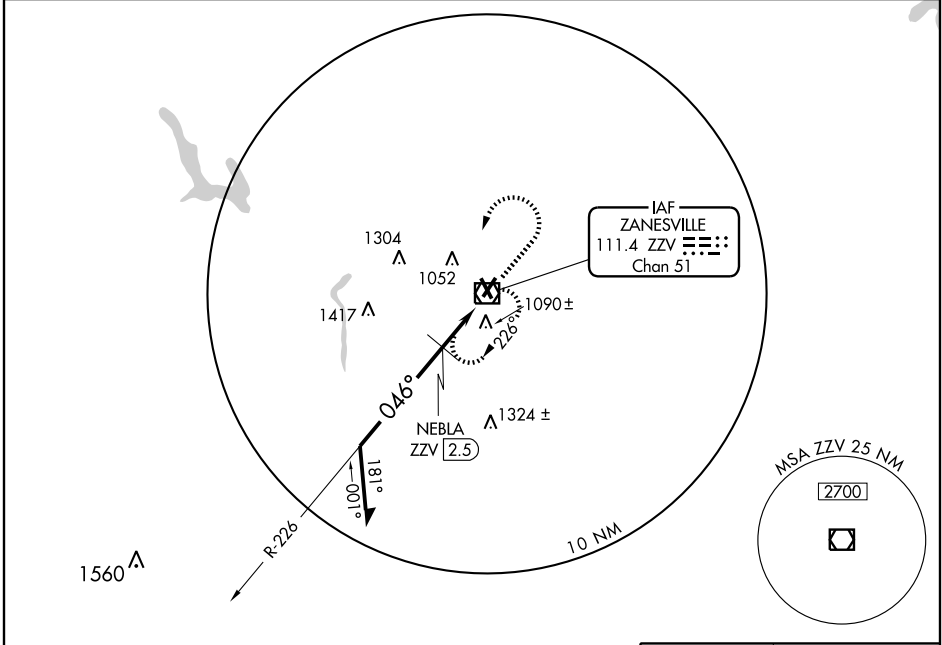
# VOR or GPS RWY 4

ZANESVILLE MUNI (ZZV)

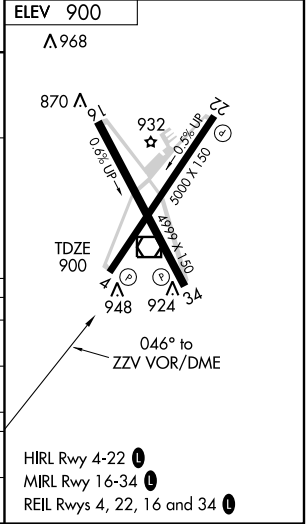
VOR/DME ZZV <b>111.4</b> Chan 51	APP CRS <b>046°</b>	Rwy Ldg TDZE Apt Elev	<b>5000</b> <b>900</b> <b>900</b>
--	------------------------	-----------------------------	---

**MISSSED APPROACH:** Climb to 3000 then left turn direct ZZV VOR/DME and hold.

ASOS <b>111.4</b>	INDIANAPOLIS CENTER <b>124.45 370.9</b>	UNICOM <b>123.0 (CTAF)</b>
----------------------	--	-------------------------------



CATEGORY	A	B	C	D
S-4	1580-1	680 (700-1)	1580-2 680 (700-2)	1580-2¼ 680 (700-2¼)
CIRCLING	1580-1	680 (700-1)	1580-2 680 (700-2)	1580-2¼ 680 (700-2¼)
NEBLA FIX MINIMUMS				
S-4	1340-1	440 (500-1)	1340-1¼ 440 (500-1¼)	1340-1½ 440 (500-1½)
CIRCLING	1400-1	500 (500-1)	1400-1½ 500 (500-1½)	1460-2 560 (600-2)



ZANESVILLE, OHIO  
Amdt 6B 09295

39°57'N-81°54'W

# ZANESVILLE MUNI (ZZV)

## VOR or GPS RWY 4

EC-2, 22 OCT 2009 to 19 NOV 2009

EC-2, 22 OCT 2009 to 19 NOV 2009

- HIRL Rwy 4-22
- MIRL Rwy 16-34
- REIL Rws 4, 22, 16 and 34