

ZANESVILLE, OHIO

AL-864 (FAA)

VOR/DME ZZV 111.4 Chan 51	APP CRS 214°	Rwy Idg TDZE Apt Elev	5000 892 900
---	------------------------	-----------------------------	---

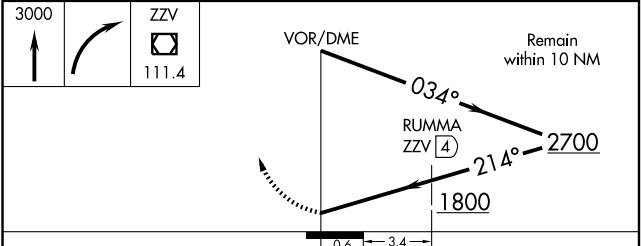
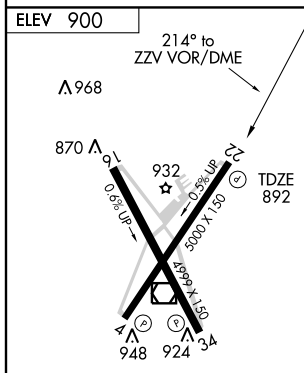
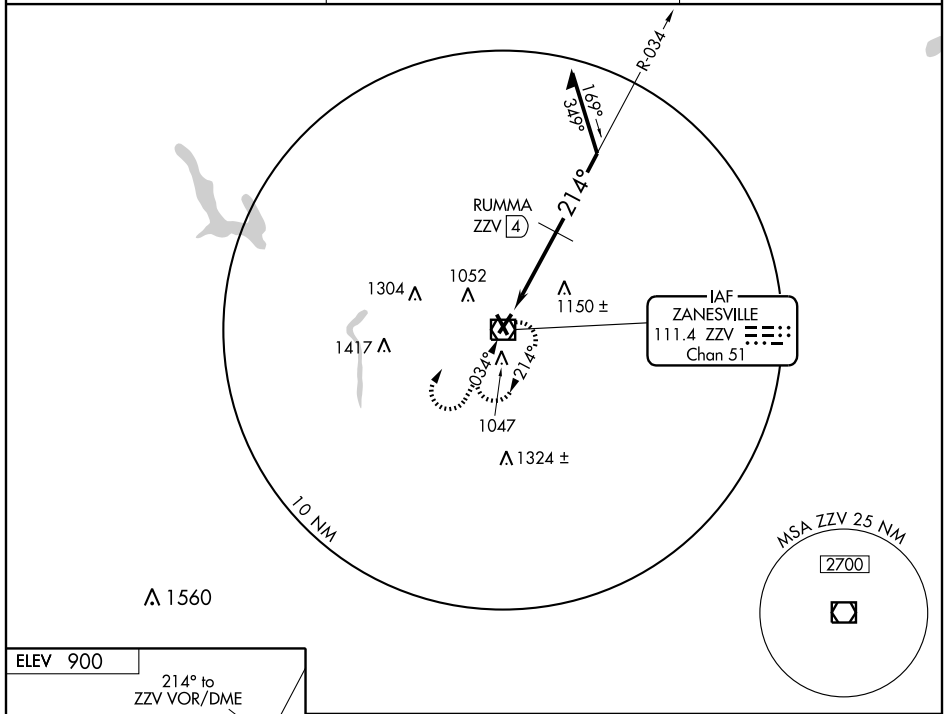
VOR or GPS RWY 22

ZANESVILLE MUNI (ZZV)

▽
▲

MISSED APPROACH: Climb to 3000 then right turn direct ZZV VOR/DME and hold.

ASOS 111.4	INDIANAPOLIS CENTER 124.45 370.9	UNICOM 123.0 (CTAF) 0
----------------------	--	---------------------------------



CATEGORY	A	B	C	D
S-22	1800-1¼	908 (900-1¼)	1800-2¾ 908 (900-2¾)	1800-3 908 (900-3)
CIRCLING	1800-1¼	900 (900-1¼)	1800-2¾ 900 (900-2¾)	1800-3 900 (900-3)
RUMMA FIX MINIMUMS				
S-22	1400-1	508 (500-1)	1400-1½	508 (500-1½)
CIRCLING	1400-1	500 (500-1)	1400-1½ 500 (500-1½)	1460-2 560 (600-2)

HIRL Rwy 4-22 **0**
MIRL Rwy 16-34 **0**
REIL Rwy 4, 22, 16 and 34 **0**

ZANESVILLE, OHIO
Amdt 3B 09295

39°57'N-81°54'W

ZANESVILLE MUNI (ZZV)

VOR or GPS RWY 22

EC-2, 22 OCT 2009 to 19 NOV 2009

EC-2, 22 OCT 2009 to 19 NOV 2009