

# VOR RWY 24

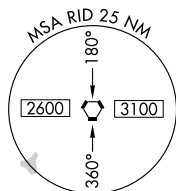
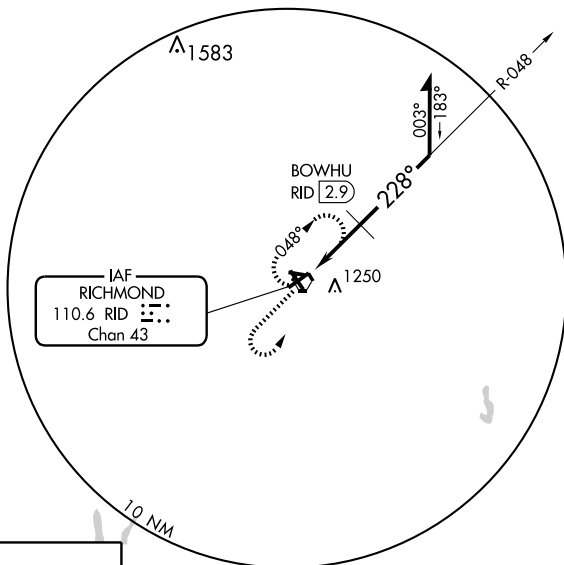
RICHMOND MUNI (RID)

VORTAC RID <b>110.6</b> Chan 43	APP CRS <b>228°</b>	Rwy Idg TDZE <b>1139</b> Apt Elev <b>1140</b>
---------------------------------------	------------------------	---

**NA** Inoperative table does not apply to S-24/BOWHU FIX minimums S-24 Cat C. When local altimeter setting not received, use James M Cox Dayton Intl altimeter setting and increase all MDA 100 feet. Increase S-24 Cat C/D and Circling Cat C/D visibility ¼ mile. Increase BOWHU FIX minimums S-24 Cat C ¼ mile and Cat D ½ mile. When using James M Cox Dayton Intl altimeter setting inoperative table does not apply to S-24/BOWHU FIX minimums S-24 Cat C. VDP NA when using James M Cox Dayton Intl altimeter setting.

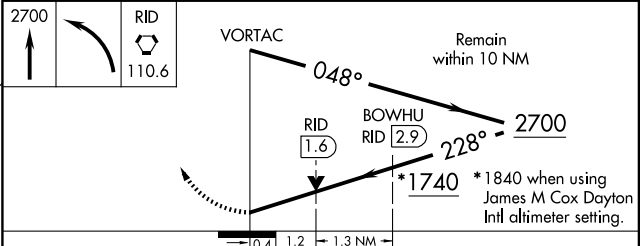
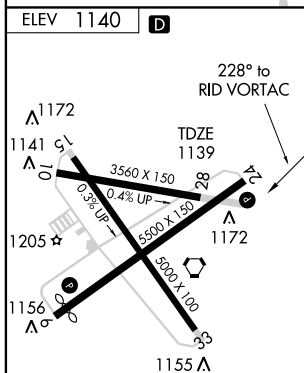
**MISSED APPROACH:**  
Climb to 2700 then left turn direct RID VORTAC and hold.

AWOS-3 <b>121.225</b>	DAYTON APP CON <b>134.45 352.05</b>	CLNC DEL <b>133.55</b>	UNICOM <b>122.7</b> (CTAF) <b>0</b>
--------------------------	--	---------------------------	--



EC-2, 22 OCT 2009 to 19 NOV 2009

EC-2, 22 OCT 2009 to 19 NOV 2009



CATEGORY	A	B	C	D
S-24	1740-¾ 601 (600-¾)		1740-1¾ 601 (600-1¾)	1740-2 601 (600-2)
CIRCLING	1740-1 600 (600-1)		1740-1¾ 600 (600-1¾)	1740-2 600 (600-2)
BOWHU FIX MINIMUMS				
S-24	1560-¾ 421 (500-¾)		1560-1¼ 421 (500-1¼)	
CIRCLING	1600-1 460 (500-1)		1600-1½ 460 (500-1½)	1700-2 560 (600-2)

LDIN Rwy 24 **0**  
MIRL Rwys 15-33 and 6-24 **0**  
REIL Rwys 6 and 24 **0**