

RNAV (GPS) RWY 6

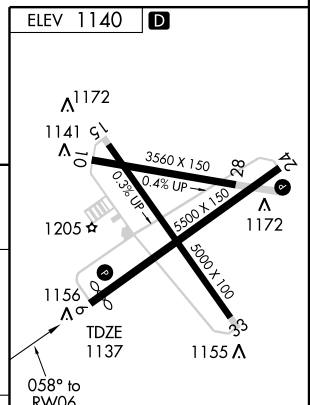
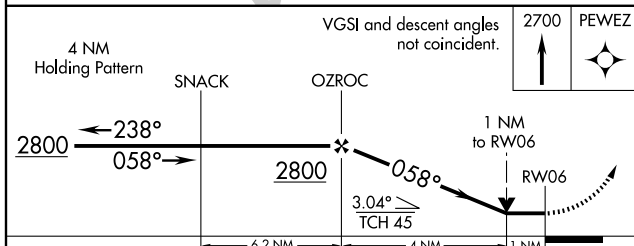
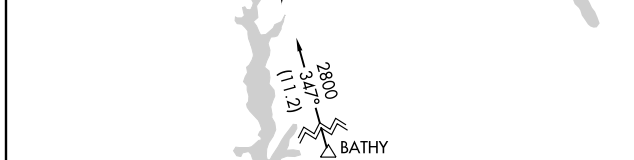
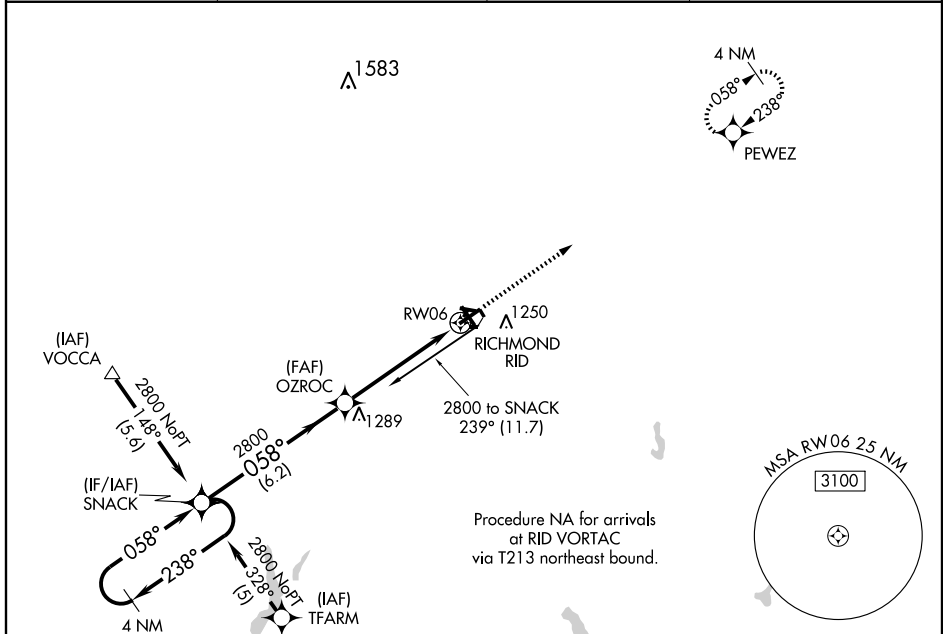
RICHMOND MUNI (RID)

APP CRS	Rwy Idg	5200
058°	TDZE	1137
	Apt Elev	1140

NA DME/DME RNP-0.3 NA. When local altimeter setting not received, use James M Cox Dayton Intl altimeter setting and increase all MDA 100 feet and LNAV visibility Cat C, D ¼ mile. VDP NA when using James M Cox Dayton Intl altimeter setting.

MISSED APPROACH: Climb to 2700 direct PEWEZ and hold.

AWOS-3 121.225	DAYTON APP CON 134.45 352.05	CLNC DEL 133.55	UNICOM 122.7 (CTAF) 0
--------------------------	--	---------------------------	---------------------------------



CATEGORY	A	B	C	D
LNAV MDA	1480-1 343 (400-1)		1480-1½ 343 (400-1½)	
CIRCLING	1600-1	460 (500-1)	1600-1½ 460 (500-1½)	1700-2 560 (600-2)

LDIN Rwy 24 0
MIRL Rwy 15-33 and 6-24 0
REIL Rwy 6 and 24 0

EC-2, 22 OCT 2009 to 19 NOV 2009

EC-2, 22 OCT 2009 to 19 NOV 2009