

RNAV (GPS) RWY 24

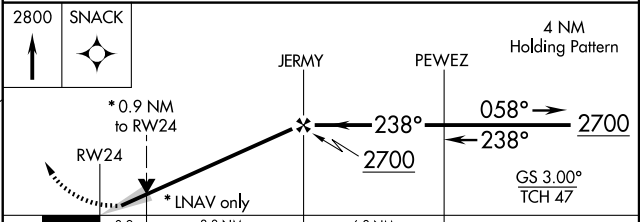
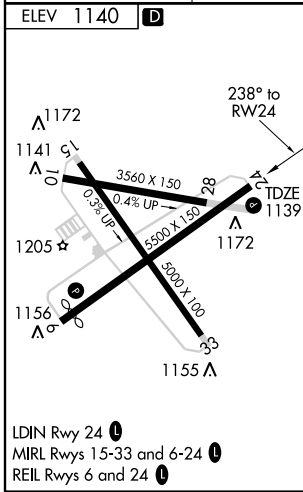
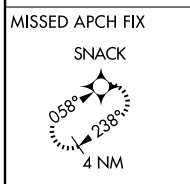
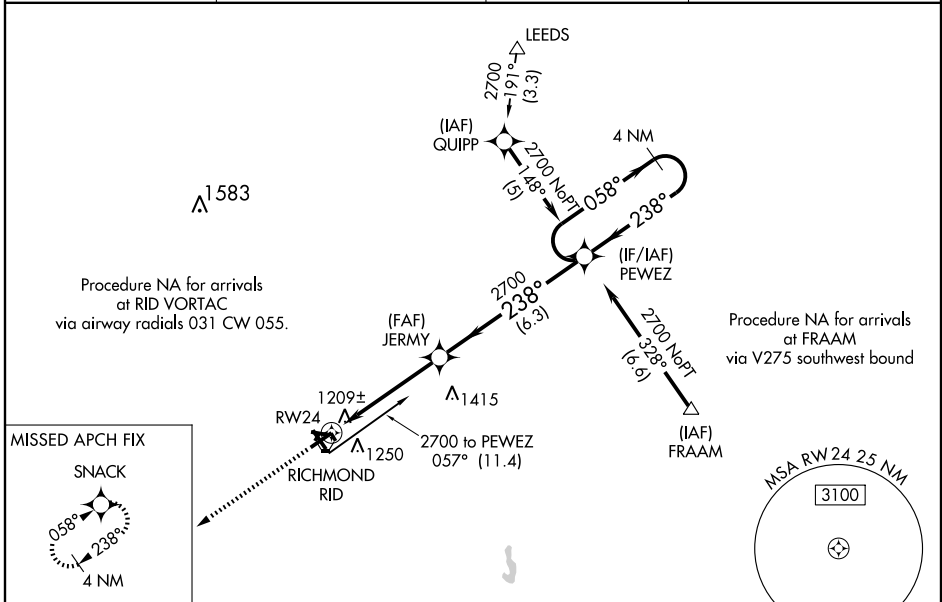
RICHMOND MUNI (RID)

WAAS CH 82112 W24A	APP CRS 238°	Rwy Idg 5500 TDZE 1139 Apt Elev 1140
---------------------------------	------------------------	---

NA Inoperative table does not apply to LNAV/VNAV all Cats. For uncompensated Baro-VNAV systems, LNAV/VNAV NA below -17°C (2°F) or above 46°C (114°F). DME/DME RNP-0.3 NA. When local altimeter setting not received, use James M Cox Dayton Intl altimeter setting and increase all DA 88 feet and all MDA 100 feet. Increase LPV and LNAV/VNAV visibility ¼ mile all Cats. Increase LNAV visibility Cat C ½ mile and Cat D ¼ mile. When using James M Cox Dayton Intl altimeter setting inoperative table does not apply to LNAV/VNAV all Cats and LNAV Cat C. VDP and Baro-VNAV NA when using James M Cox Dayton Intl altimeter setting.

MISSED APPROACH:
Climb to 2800 direct SNACK and hold.

AWOS-3 121.225	DAYTON APP CON 134.45 352.05	CLNC DEL 133.55	UNICOM 122.7 (CTAF) 0
--------------------------	--	---------------------------	---------------------------------



CATEGORY	A	B	C	D
LPV DA	1339-¾		200 (200-¾)	
LNAV/VNAV DA	1549-1½		410 (500-1½)	
LNAV MDA	1460-¾ 321 (400-¾)		1460-1 321 (400-1)	
CIRCLING	1600-1	460 (500-1)	1600-1½ 460 (500-1½)	1700-2 560 (600-2)

EC-2, 22 OCT 2009 to 19 NOV 2009

EC-2, 22 OCT 2009 to 19 NOV 2009