

QUINCY, ILLINOIS

AL-862 (FAA)

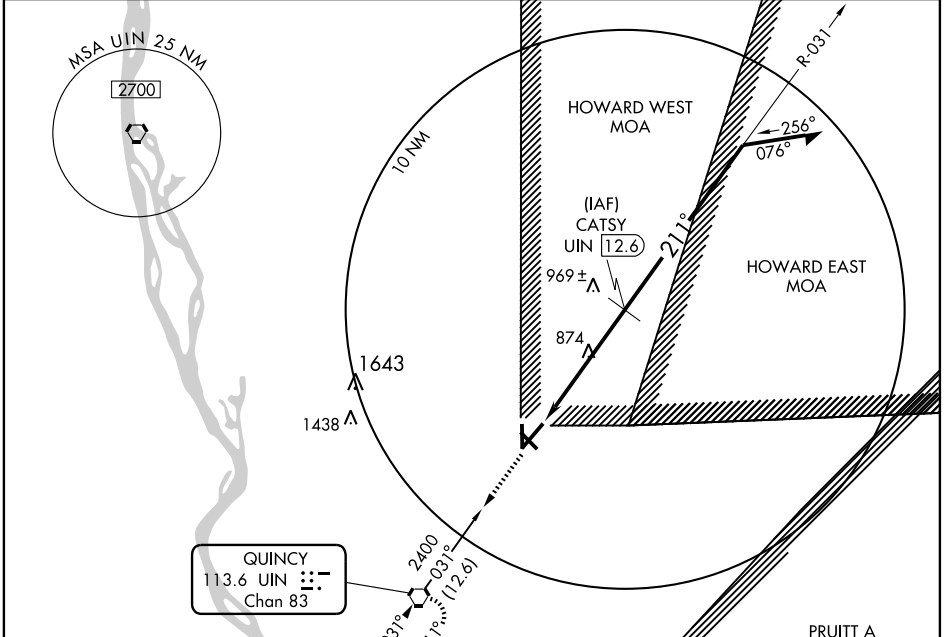
VORTAC UIN 113.6 Chan 83	APP CRS 211°	Rwy Idg TDZE Apt Elev	7098 749 768
--	------------------------	-----------------------------	---

VOR/DME RWY 22
QUINCY RGNL-BALDWIN FIELD (UIN)

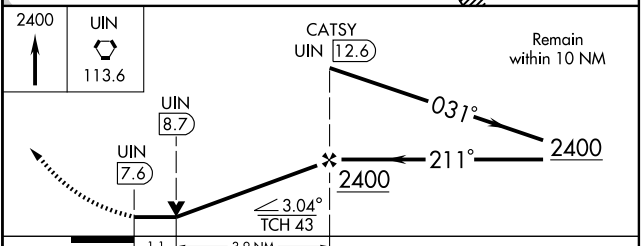
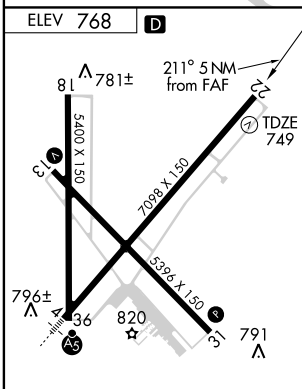
⚠ VDP NA when using Pittsfield altimeter setting.
⚠ If local altimeter setting not received, use Pittsfield altimeter setting and increase all MDAs 80 feet.

MISSED APPROACH: Climb to 2400 direct UIN VORTAC and hold.

ASOS 121.425	KANSAS CITY CENTER 135.525 319.9	UNICOM 123.0 (CTAF) 0
------------------------	--	---------------------------------



QUINCY
113.6 UIN
Chan 83



CATEGORY	A	B	C	D
S-22	1140-1 391 (400-1)			1140-1¼ 391 (400-1¼)
CIRCLING	1200-1 432 (500-1)	1220-1 452 (500-1)	1220-1½ 452 (500-1½)	1320-2 552 (600-2)

REIL Rwy 18 and 22
HIRL Rwy 4-22
MIRL Rwy 13-31 and 18-36

QUINCY, ILLINOIS
Amdt 8 08297

39° 57' N-91° 12' W

QUINCY RGNL-BALDWIN FIELD (UIN)
VOR/DME RWY 22

EC-3, 22 OCT 2009 to 19 NOV 2009

EC-3, 22 OCT 2009 to 19 NOV 2009